

**FSA20-EQU18.0, ITEM# 12**  
**BULLDOZER: 180HP Bulldozer Tractor with Canopy**  
**D6 SHERIFF'S CONTRACT WORKSHEET**  
**76" GAUGE**

464-5807	D6 20A TTT CFG1
464-5587	BASIC ARRANGEMENT
464-5180	FINAL DRIVE, 76" (1930 MM)
464-5201	ENGINE, LUC, STANDARD
464-5556	PRECLEANER, BASIC
460-4590	OIL DRAIN, BASIC
578-2382	UNDERCARRIAGE, HDXL
545-3920	TRACK, 560MM / 22" MS HDXL
460-7149	FAN, REVERSING, PUSHARM
464-5463	HYDRAULICS, PUSHARM
464-5459	CONTROL, RIPPER
464-5174	ALTERNATOR, 150 AMP
571-6177	LIGHTS, 6 LED, PUSHARM
564-0762	CAB, STANDARD
470-7252	SEAT, STANDARD
565-0836	VISIBILITY ARR, SINGLE CAMERA
464-5451	PREMIUM DISPLAY, NON ARO
464-5756	CONTROL, STANDARD, PUSHARM
522-7680	FUEL TANK, BASIC
471-7277	GUARD, BOTTOM
471-0416	ENCLOSURE, ENGINE, PUSHARM
528-4042	NO REAR ATTACHMENT
505-6704	GRAB HANDLES, STD, PUSHARM
472-5602	WATER JACKET HEATER, 110V .
464-5283	FLUIDS, STD OIL, -35F
555-5500	FILM, WARNING, ANSI
472-7310	6SU BULLDOZER
463-5863	BLADE, 6SU ARO

**D6 TRACK-TYPE TRACTOR  
EAST PEORIA, IL, USA (SAP)**Ship Weight  
lbsLIST PRICE  
AT DEALER

Standard Equipment:

**POWERTRAIN**

Enhanced Full Auto Shift  
Torque Divider, Lock up  
Transmission, Electronically Controlled  
Powershift, 4 Speed  
Shift Management  
Automatic Directional and Downshift  
Controlled Throttle, Load Compensated  
Decelerator and Brake Pedals  
Powertrain Control Module  
Throttle Dial, Electronic  
Bi-Directional Shift Dial  
C9.3B diesel engine  
EPA/ARB Tier 4 final  
certified engine with aftertreatment  
Air cleaner, Strata tube precleaner  
with dust ejection  
Air filter w/electronic service  
indicator  
Aftercooler, air to air (ATAAC)  
Coolant, extended life  
Fan, hydraulic reversing, cold weather  
Final drives, double reduction  
planetary  
Radiator, aluminum bar plate  
Fuel priming pump, electric  
Parking brake, electronic  
Starting aid, ether ready, automatic  
Turbocharger  
Fuel water separator  
Ecology drain

**UNDERCARRIAGE**

Carrier rollers  
Equalizer bar, maintenance free  
Rollers, lifetime lubricated  
Track, lifetime lubricated  
Track roller frames, tubular  
Track adjusters, hydraulic  
Sprocket rim segments, replaceable

**ELECTRICAL**

LED lights, 6 standard  
Alarm, backup  
Alternator, 150 AMP  
Batteries, 2 maintenance free 12V  
(1400 cca) (24V system), heavy duty  
Converter, two 10 amp 12V outlets  
Starter, heavy duty, 24V  
Horn, forward warning  
Light, work, underhood

**OPERATOR ENVIRONMENT**

One piece cab, sound suppressed,  
Integrated roll over protection(IROPS),

adjustable operator controls and  
armrests, cab mounted modular HVAC  
system, and screen ready.  
Cup holders  
Lunchbox storage  
Electro-hydraulic implement  
steering controls  
Full color LCD display, 254mm(10in)  
integrated with rear camera  
Foot pads, dash  
Mirror, rearview  
Seatbelt, retractable 76mm(3 in)  
Wipers  
Glove box  
Radio, AM/FM

**OTHER STANDARD EQUIPMENT**

Ripper ready rear hydraulics  
30 minute cab removal  
Ladder, rear access  
Mounting provision for grease gun,  
shovel and fire extinguisher  
CD ROM parts book  
Engine enclosures, perforated  
hinged, removable  
Bottom guards, hinged, removable  
Ground level service center with  
remote electrical disconnect,  
secondary shutdown switch & hour meter  
Hood, perforated  
Hydraulics, independent steering  
and implement  
Hydraulics, load sensing, dozer lift  
and tilt  
Product link, Cellular PLE742  
Radiator doors, perforated, hinged,  
louvered  
S.O.S sampling ports  
Vandalism protection for fluid  
compartments and battery box



# D6

## TRACK-TYPE TRACTOR



---

**Net Power (2,200 rpm)**

ISO 9249/SAE J1349

161 kW (215 hp)

ISO 9249/SAE J1349 (DIN)

(219 hp)

**Operating Weight Ranges**

VPAT

22 240-23 530 kg (49,030-51,875 lb)

Push Arm

22 000-23 866 kg (48,500-52,615 lb)

Cat® C9.3B Engine meets U.S. EPA Tier 4 Final/EU Stage V/Korea Tier 4 Final emission standards with an aftertreatment system that is designed to be transparent to the operator.





The new **Cat® D6** dozer helps you move material at a lower cost with a fully automatic transmission, outstanding fuel efficiency and reduced service/maintenance costs. The D6 is legendary versatility you have come to trust, with added performance and efficiency to help you take your business to the next level.

# THE NEW CAT® D6

RENOWNED PERFORMANCE,  
LOWER OPERATING COST



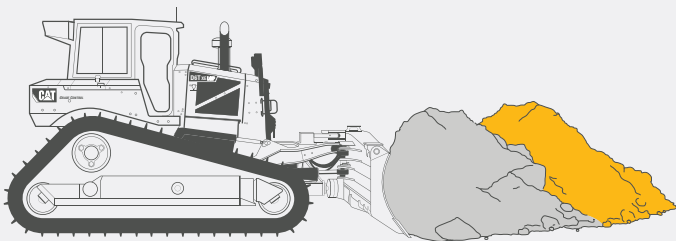
## PUSHING YOUR PROFITABILITY FORWARD

Whether your work demands maximum productivity, or the lowest operating cost to move material, the fully redesigned Cat D6 dozer is the right machine for the job.

- + DESIGNED TO SAVE YOU FUEL, CUT YOUR SERVICE/MAINTENANCE COSTS AND HELP YOU REACH YOUR JOB SITE SAFETY GOALS
- + MAXIMIZE VERSATILITY WITH OPTIMIZED UNDERCARRIAGE AND BLADE CONFIGURATIONS THAT DELIVER BETTER BALANCE FOR GRADING, CAPACITY TO MOVE MORE MATERIAL AND LOW GROUND PRESSURE
- + UPDATED CAT CONNECT GRADE TECHNOLOGY FEATURES ADD TO THE UNPRECEDENTED EASE OF OPERATION BY HELPING YOU SAVE EVEN MORE TIME, MATERIAL AND OPERATOR EFFORT



## MOVE MORE MATERIAL WITH EVERY LITER/GALLON OF FUEL



### THE D6 GIVES YOU UP TO **20% BETTER** FUEL EFFICIENCY COMPARED TO THE D6T DOZER

NOTE: COMPARISON IS BASED ON 2014-2016 3-SPEED D6T DOZER

## UP TO 9% LOWER MAINTENANCE COST

Designed specifically to reduce your service and maintenance costs with updated components, longer service intervals and fewer scheduled maintenance tasks.

## UP TO 20% MORE FUEL EFFICIENT

Fully automatic 4-speed transmission continuously adjusts for maximum efficiency and power to the ground without added operator input.

## UP TO 50% MORE PRODUCTIVITY WITH CAT CONNECT TECHNOLOGY

- + Simple Cat GRADE with Slope Assist™
- + Improved Cat GRADE with 3D
- + Next generation Attachment Ready Option



# RENOWNED PERFORMANCE **LOWER OPERATING COST**

When you need to move material at a lower cost, let the new D6 handle some of the details for you. Get the power the job demands, along with the fuel savings you want, all with less operator effort.



---

## **AUTOMATICALLY EFFICIENT**

Fully automatic 4-speed transmission operates at maximum power and efficiency for you, so you don't have to think about it. An added gear between first and second means you barely feel it shifting.

---

## **USE LESS FUEL**

The new D6 saves you fuel by continuously adjusting to give you maximum efficiency without losing power to the ground. Cash in on up to 20% better fuel efficiency compared to the 3-speed D6T.

---

## **EASY ON OPERATORS**

To get the most from your dozer, just set the ground speed and go. This means less effort for experienced operators and faster proficiency for newer operators.

CAT CONNECT GRADE TECHNOLOGY

# BOOST YOUR PRODUCTIVITY

---

## NO GPS SIGNAL? NO PROBLEM

Cat GRADE with Slope Assist automatically maintains blade position without a GPS signal. Put it to work building pads, creating simple design plans on-the-go, or working where GPS is unavailable.

---

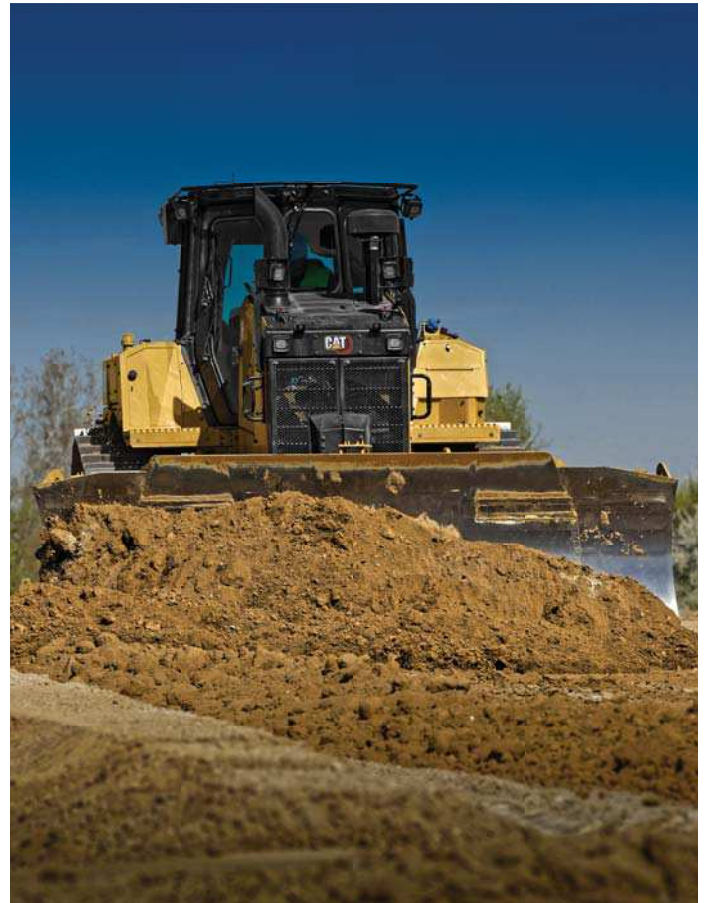
## FIRST PASS TO FINISH GRADE

Cat GRADE with 3D has been updated to give you even more speed and accuracy without position sensing cylinders. The factory integrated system has a new, friendly 10-inch (254 mm) touchscreen that works like a smart phone, so it is easy for operators to pick up quickly. Smaller antennas are integrated into the cab roof for even better protection. AutoCarry™ is included to automate blade lift for more consistent blade loads and less track slip.

---

## READY WHEN YOU ARE

With Attachment Ready Option (ARO), your dozer comes from the factory ready for simple installation of an aftermarket grade control system. The new cab includes features, like a component shelf, to make it easier to utilize your existing technology systems.







## BUILD YOUR IDEAL DOZER

Whatever job you need to do, the D6 has the optimized components to spec out the most versatile, productive member of your fleet.



## PICK YOUR POWER TRAIN

Propel your productivity forward with a fully-automatic 4-speed power shift transmission, or up your efficiency game with Electric Drive.



## PRODUCTIVITY OUT FRONT

Pick a beefed-up push arm bulldozer with plenty of dirt moving power or a new purpose-built 6-way VPAT blade to maximize your versatility.



## WHERE STEEL MEETS GROUND

Need low ground pressure? Working on dirt, rock or landfill? The D6 has the undercarriage and track shoe choices to keep you on track whatever the ground conditions.





## POWER TO MOVE DIRT

### FINESSE FOR BETTER GRADING



#### BETTER BALANCE

Stronger, lighter VPAT structure is redesigned to give you better balance for grading. No need for a rear implement or counterweight.



#### LOWER GROUND PRESSURE

A new wide-gauge LGP VPAT is purpose-built and equipped with 915 mm (36 in) centered shoes. This adds up to 35 kPa (5 psi) ground pressure to help you take on soft footing.



#### BLADE VERSATILITY

Cat VPAT blades give you class-leading range of motion so you can handle challenging jobs like trenching and backfilling. To finish the job, the VPAT blade stays level when angled so you get a smoother grade.



#### GRADE FASTER

Grade faster – in the 2.5-3.0 speed range – without sacrificing quality. Wider LGP blade means fewer passes. New finish grading undercarriage option (10-roller) gives you smoother grades, at higher speeds, even in difficult surfaces like sand and gravel.



## ZERO SHIFTS PER DAY NO UPSHIFTING AND DOWNSHIFTING NEEDED.

JUST SET YOUR GROUND SPEED AND GO.



The D6 does the thinking for you to automatically select the most productive and efficient mode for the work you're doing.

## UNPRECEDENTED EASE OF OPERATION

No need to worry about shifting gears to get the most from the machine – just choose your ground speed and go. The dozer automatically optimizes based on load for greatest productivity and fuel efficiency.

## CUSTOMIZE YOUR COMFORT

A wider air-suspension seat has more adjustments and independently adjustable arm rests so you can find just the right position. Heated/cooled seat options available.

## OPERATOR FRIENDLY CAB

Enjoy more work and storage space. Updated heating/cooling helps keep you more comfortable and reduces window fogging/frosting too.

- + New 10-inch (254 mm) touchscreen is easy to use, with a great view of machine settings, rearview camera and Slope Indicate/Slope Assist screens
- + Save your preferred settings in Application Profile



# SAFER WORKERS

## SAFER JOB SITES

---

The safety of your operators and other people on the job site is everything. New machine features help with visibility around the dozer, as well as reducing potential injury from a fall.



### BETTER VIEW

Redesigned cab with integrated Rollover Protective Structure (ROPS) has about 15% more glass area to give you better all-around visibility. The exhaust stack and precleaner line up along a narrower hood for a clearer view out front.



### EXTRA EYES

A High Definition rearview camera is standard. It shows prominently in the main display and includes back-up lines to help guide you.



### EASY ACCESS

Standard rear ladder puts fueling, filter changes and rear window cleaning in easy reach. Ground-level access to optional fast fuel fill and maintenance points. Grab rail on both sides of cab roof and tie offs add to your safety.

The new D6 is designed specifically to reduce your service and maintenance costs with updated components, longer service intervals and fewer scheduled maintenance tasks.

# TIME IS MONEY SPEND MORE TIME IN THE DIRT



## GET BACK TO WORK

Give your operators more seat time with convenient routine maintenance and added durability designed to keep everyone busy ... except your service team.



LESS MAINTENANCE TIME

# LOWER MAINTENANCE COST



## GET BACK TO WORK

Grouped service points, modular component design and easy access to routine maintenance points save you time every day. If needed, the cab can be removed in about 30 minutes, compared to 4 hours on previous models.

## SPEND LESS

Fewer filters and service points, along with longer service intervals, save you time and money on routine maintenance. Standard reversing fan extends time between core clean-outs and advanced cab filtration means less dust for reduced system wear and tear.

## GAIN DURABILITY

New Cat C9.3B engine boosts durability with a simplified emissions reduction and a redesigned fuel system. New Heavy Duty Extended Life undercarriage – HDXL with DuraLink™ – offers up to 20% more seal life in high impact conditions.

*Comparisons to previous model D6T over initial 10,000 hours of operations*

# CAT LINK TECHNOLOGY

## TAKES THE GUESSWORK OUT OF MANAGING YOUR EQUIPMENT

**CAT LINK** telematics technology helps take the complexity out of managing your job sites – by gathering data generated by your equipment, materials, and people – and serving it up to you in customizable formats.

### **CAT PRODUCT LINK™**

Product Link™ collects data automatically and accurately from your assets – any type and any brand. Information such as location, hours, fuel usage, productivity, idle time, maintenance alerts, diagnostic codes, and machine health can be viewed online through web and mobile applications.



### **VISIONLINK®**

Access information anytime, anywhere with VisionLink® – and use it to make informed decisions that boost productivity, lower costs, simplify maintenance, and improve safety and security on your job site. With different subscription level options, your Cat dealer can help you configure exactly what you need to connect your fleet and manage your business, without paying for extras you don't want. Subscriptions are available with cellular or satellite reporting or both.



### **REMOTE SERVICES**

Access information wherever you are to save time and money.

- + **Remote Flash** – get software updates to one or more machines remotely. You just need a designated person close to the machine to initiate/confirm the update.
- + **Remote Grade** lets you wirelessly manage site plans via Trimble Connect Services.
- + **Operator ID** lets you track machine operation by individual operator using the main display and Product Link.





## SPECIAL ARRANGEMENTS

# PURPOSE-BUILT FOR TOUGH TASKS

---

## EQUIPPED FOR THE JOB

Factory guarding, seals and cab features help protect your machine and operator in especially harsh conditions. Insulated Clean Emissions Module and thermal shields add protection. High debris cooling system, automatic reversing fan help with cleanout.

---

## FORESTRY AND LAND CLEARING

Updated sweeps lead the list of features designed to help protect your dozer from damage and debris build-up. Specialized track shoes plus woodchip and coal blades are matched to the job. Precleaner and roof-mounted filter help protect against dust and debris.



---

## WASTE HANDLER

Take on landfill and transfer station work with confidence. Robust guarding, striker bars and seals help protect against impact, airborne debris and wrapping. Components are designed for easy cleanout, and air handling systems deliver cleaner air to the machine and to the operator. Specialized blades, track shoes and screens add to your productivity.



# TECHNICAL SPECIFICATIONS

See [cat.com](http://cat.com) for complete specifications.

TECHNICAL SPECIFICATIONS			
Power Train	Fully Automatic Mechanical		
Engine	Cat C9.3B		
Emissions	U.S. EPA Tier 4 Final, EU Stage V, Korea Tier 4 Final		
Build Number	20A		
Net Power (Rated) – 2,200 rpm			
ISO 9249/SAE J1349	161 kW	215 hp	
ISO 9249/SAE J1349 (DIN)		219 hp	
Fuel Tank	341 L	90 gal	
DEF Tank	28 L	7.4 gal	

BLADE	CAPACITY	WIDTH
SU	5.7 m³   7.5 yd³	3312 mm   10.9 ft
LGP SU	5.8 m³   7.6 yd³	3613 mm   11.9 ft
LGP S	3.8 m³   5.0 yd³	4063 mm   13.3 ft
VPAT	4.1 m³   5.4 yd³	3680 mm   12.1 ft
LGP VPAT (30-in)	4.5 m³   5.8 yd³	4000 mm   13.1 ft
LGP VPAT (36-in)	4.9 m³   6.5 yd³	4340 mm   14.2 ft

- All non-road Tier 4 Interim and Final, Stage IIIB, IV and V, and Korea Tier 4 Final diesel engines are required to use only Ultra Low Sulfur Diesel (ULSD) fuels containing 15 ppm EPA/10 ppm EU (mg/kg) sulfur or less. Biodiesel blends up to B20 (20% blend by volume) are acceptable when blended with 15 ppm (mg/kg) sulfur or less ULSD. B20 should meet ASTM D7467 specification (biodiesel blend stock should meet Cat biodiesel spec, ASTM D6751 or EN 14214). Cat DEO-ULS™ or oils that meet the Cat ECF-3, API CJ-4, and ACEA E9 specification are required. Consult your OMM for further machine specific fuel recommendations.
- Diesel Exhaust Fluid (DEF) used in Cat Selective Catalytic Reduction (SCR) systems must meet the requirements outlined in the International Organization for Standardization (ISO) standard 22241.
- The air conditioning system on this machine contains the fluorinated greenhouse gas refrigerant R134a (Global Warming Potential = 1430). The system contains 1.36 kg of refrigerant which has a CO<sub>2</sub> equivalent of 1.946 metric tonnes.

CONFIGURATION	D6	D6 LGP (30-IN)	D6 LGP (36-IN)
Operating Weight <sup>1</sup>	22 000 kg (48,500 lb)	22 740 kg (50,130 lb)	23 866 kg (52,615 lb)
Ground Pressure	54 kPa (7.9 psi)	46 kPa (6.6 psi)	35 kPa (5.1 psi)
Machine Height	3.17 m (124.9 in)	3.17 m (124.9 in)	3.18 m (125.1 in)
Length of Machine without Blade	4.73 m (186.2 in)	4.73 m (186.2 in)	3.22 m (126.9 in)
Ground Clearance	361 mm (14.2 in)	361 mm (14.2 in)	411 mm (16.2 in)
Track Gauge	1.93 m (76 in)	2.08 m (82 in)	2.28 m (90 in)
Width over Trunnions	2.69 m (106 in)	2.99 m (118 in)	3.49 m (137.4 in)
Width across End Bits	3.30 m (10 ft 10 in)	3.61 m (11 ft 10 in)	3.92 m (12 ft 10 in)
Width across End Bits, Angled	—	—	—
Width of Standard Track Shoe	610 mm (24 in)	760 mm (30 in)	915 mm (36 in)
Length of Track on Ground	2.96 m (116.7 in)	2.96 m (117 in)	3.25 m (127.8 in)
CONFIGURATION	D6 VPAT	D6 LGP (30-IN) VPAT	D6 LGP (36-IN) VPAT
Operating Weight <sup>1</sup>	22 240 kg (49,030 lb)	22 975 kg (50,650 lb)	23 530 kg (51,875 lb)
Ground Pressure	49 kPa (7.1 psi)	40 kPa (5.8 psi)	35 kPa (5.0 psi)
Machine Height	3.22 m (126.9 in)	3.22 m (126.9 in)	3.22 m (126.9 in)
Length of Machine without Blade	5.13 m (202.1 in)	5.13 m (202.1 in)	5.13 m (202.1 in)
Ground Clearance	422 mm (16.6 in)	390 mm (15.4 in)	383 mm (15.1 in)
Track Gauge	2.08 m (82 in)	2.29 m (90 in)	2.39 m (94 in)
Width over Trunnions	—	—	—
Width across End Bits	3.68 m (12 ft)	4.00 m (13 ft 2 in)	4.34 m (14 ft 3 in)
Width across End Bits, Angled	3.36 m (11 ft)	3.66 m (12 ft)	3.97 m (13 ft)
Width of Standard Track Shoe	610 mm (24 in)	760 mm (30 in)	915 mm (36 in)
Length of Track on Ground	3.25 m (127.8 in)	3.36 m (132.1 in)	3.36 m (132.1 in)

<sup>1</sup> With Multi-Shank Ripper (three shanks) add 1696 kg (3,739 lb).

For complete specifications and offerings, please reference the Technical Specifications document at [www.cat.com](http://www.cat.com) or consult your local Cat dealer.



# STANDARD & OPTIONAL EQUIPMENT

Standard and optional equipment may vary. Consult your Cat dealer for details.

POWER TRAIN	STANDARD	OPTIONAL
Fully-automatic 4-speed transmission	•	
Cat C9.3B diesel engine	•	
Double reduction planetary final drives	•	
Hydraulic reversing fan	•	
OPERATOR ENVIRONMENT	STANDARD	OPTIONAL
Fully redesigned cab, sound suppressed, with Integrated Roll Over Protective Structure (IROPS)	•	
Full-color 10-inch (254 mm) liquid crystal touchscreen display	•	
Integrated rearview camera	•	
Adjustable operator controls/armrests	•	
Cab mounted modular HVAC system	•	
Added storage areas	•	
Electrohydraulic implement and steering controls	•	
Cloth seat	•	
Deluxe leather heated/ventilated seat		•
Communication radio ready	•	
Lights – 6 LED	•	
Premium lights – 12 LED		•
Integrated warning lights		•
CAT CONNECT TECHNOLOGY	STANDARD	OPTIONAL
Slope Indicate	•	
Attachment Ready Option (ARO) with Assist/Cat GRADE with Slope Assist	•	
Cat GRADE with 3D		•
Product Link, Cellular PLE641	•	
Product Link Elite PLE631 – Dual Cellular/Satellite		•
BLADES	STANDARD	OPTIONAL
Semi-Universal		•
VPAT		•
Straight blade		•
Angle blade		•
Foldable VPAT – under 3 m (9.9 ft) transport width (not available in all regions)		•
Waste/Landfill		•
<i>For a full list of blade offerings, please refer to the D6/D6 XE Technical Specifications brochure on cat.com.</i>		

UNDERCARRIAGE	STANDARD	OPTIONAL
Heavy Duty (HDXL with DuraLink) or SystemOne™		•
Redesigned track roller frame	•	
10-Roller Fine Grading undercarriage		•
Moderate Service or Extreme Service track shoes		•
<i>For a complete listing of track shoe offerings, please refer to the D6/D6 XE Technical Specifications brochure on cat.com.</i>		
SERVICE AND MAINTENANCE	STANDARD	OPTIONAL
Fast fuel fill ready		•
Fast fuel pump		•
Refilling fuel pump (EU only)		•
Rear access ladder	•	
Shovel holder	•	
Ground level service center	•	
30-minute cab removal	•	
Fire extinguisher mounting provision	•	
Ecology drains	•	
High-speed oil change		•
Underhood work light	•	
HYDRAULICS	STANDARD	OPTIONAL
Independent steering and implement pumps	•	
Load sensing hydraulics	•	
ATTACHMENTS	STANDARD	OPTIONAL
Ripper-ready rear hydraulics	•	
Ripper and winch-ready rear hydraulics		•
High lift ripper with straight or curved shanks		•
Winch		•
Drawbar		•
Counterweights		•
Side screens		•
Rear screen – hinged or fixed		•
Sweeps		•
Forestry and Waste Special Arrangements		•

Not all features are available in all regions. Please check with your local Cat dealer for specific offering availability in your area.

For additional information, refer to the Technical Specifications brochure available at [www.cat.com](http://www.cat.com) or your Cat dealer.

For more complete information on Cat products, dealer services and industry solutions, visit us on the web at [www.cat.com](http://www.cat.com)

© 2018 Caterpillar. All Rights Reserved.

VisionLink is a trademark of Trimble Navigation Limited, registered in the United States and in other countries.

Materials and specifications are subject to change without notice. Featured machines in photos may include additional equipment. See your Cat dealer for available options.

CAT, CATERPILLAR, LET'S DO THE WORK, their respective logos, "Caterpillar Yellow", the "Power Edge" trade dress as well as corporate and product identity used herein, are trademarks of Caterpillar and may not be used without permission.  
[www.cat.com](http://www.cat.com) [www.caterpillar.com](http://www.caterpillar.com)

AEXQ2480  
Build Number: 20A  
(North America, Europe,  
ANZ, Turkey, Korea)

