

**FSA20-EQU18.0, ITEM# 10**  
**BULLDOZER: 90HP Bulldozer Tractor with Canopy, Standard - Wide Track**  
**D2 SHERIFF'S CONTRACT WORKSHEET**  
**61" GAUGE**

558-8523	D2 12A TRACTOR CFG20
558-8529	ENGINE, CAT C3.6
550-6019	AIR CLEANER W/O PRECLEANER
397-4327	UNDERCARRIAGE, SALT
286-4304	TRACK, 18", MS, SALT
558-8535	HYDRAULICS, 3 VALVE, PUMP STD
558-8557	CONTROL, PITCH
394-1851	LIGHTS, 6
558-8544	CANOPY, ROPS, HEATER
552-3237	TENSIONER, OROPS, NON-AC
559-5725	SEAT, VINYL
558-8550	SOUND SUPPRESSION, OMISSION
558-8567	CONTROL, BASIC
551-2972	PROD LINK, PLE643/PLE743 RADIO
550-6050	GRILL, RADIATOR, HD
397-4287	GUARD GP, REAR OMISSION
557-1343	GUARD, BELLY
590-0677	FAN, STANDARD
552-3229	COOLER, STANDARD
244-7433	DRAWBAR, STANDARD
244-7503	NO FRONT COUNTERWEIGHT
397-4268	BLADE, 109.5"
421-8926	SERIALIZED TECHNICAL MEDIA KIT
558-8582	INSTRUCTIONS, ANSI

**D2 TRACK TYPE TRACTOR  
ATHENS, GA, USA (SAP)**Ship Weight  
lbsLIST PRICE  
AT DEALER

Standard Equipment:

**POWERTRAIN**

Caterpillar C3.6 diesel engine  
 Turbocharged-aftercooled (TA)  
 Aluminum bar plate cooling system  
 (radiator, powertrain)  
 Radial air cleaner with precleaner,  
 automatic dust ejection and under-hood  
 intake  
 Dual path, closed-loop, hydrostatic  
 transmission  
 Electric fuel pump  
 Fuel/water separator  
 Automatic traction control

**UNDERCARRIAGE**

7 roller track frame  
 Track rollers, lifetime lubricated  
 Carrier rollers  
 Track adjusters, hydraulic  
 Guards, front/rear guiding

**HYDRAULICS**

3 valve hydraulics  
 Single lever, three function control  
 Hydraulic pump and oil  
 Stable blade control

**ELECTRICAL**

Alternator, 150 amp, heavy duty  
 Alarm, backup  
 Horn, electric  
 6 work light package  
 Batteries, heavy duty, maintenance free,  
 1000 CCA.  
 Diagnostic connector  
 Starter electric 12V heavy duty

**OPERATOR ENVIRONMENT**

ROPS/FOPS canopy  
 Seat, air suspended, cloth or vinyl  
 Seatbelt, hi-vis retractable 76mm(3")  
 Seatbelt buckling indicator/reminder  
 on monitor  
 Foot pads, dash  
 Electronic monitoring system  
 with gauge for:  
 -Engine coolant temperature  
 -Hydraulic oil temperature  
 -Fuel level  
 -Diesel exhaust fluid (DEF)  
 -Chassis slope indication  
 Travel speed limiter, electronic  
 Engine RPM and gear display  
 Hour meter, electronic  
 Engine air cleaner service indicator,

Electronic security system  
 Water-in-fuel indicator, electronic  
 Throttle switch, rotary  
 ECO mode  
 Controls, seat mounted, fore/aft  
 adjustment  
 Armrests, adjustable  
 Mirror, rearview, inside  
 Single pedal combining deceleration and  
 braking functions  
 Independent forward/reverse speed  
 settings  
 Speed recall  
 Powerport, 12 volt  
 Coat hook  
 Storage compartment  
 Cup holders  
 Floor mat, rubber, heavy duty

**FLUIDS**

Antifreeze, extended life coolant (-37C)  
 HYDO-advanced hydraulic oil (10W)

**OTHER STANDARD EQUIPMENT**

C-frame, variable pitch link  
 Hydraulic cylinders and lines  
 Engine enclosures  
 Front pull device  
 Rigid drawbar  
 Ecology drains (engine, powertrain and  
 implement oil, and engine coolant)  
 Scheduled oil sampling ports (engine,  
 powertrain implement oil)  
 Vandalism protection  
 Heavy duty crankcase guard  
 Heavy duty front grill

# D2

## TRACK-TYPE TRACTOR



---

**Net Power (2,200 rpm)**

SAE J1349, ISO 9249, 80/1269/EEC 68.8 kW (92 hp)

**Operating Weight**

D2 8338 kg (18,382 lb)

D2 LGP 8648 kg (19,066 lb)

Cat® C3.6 Engine meets U.S. EPA Tier 4 Final/Japan 2014 (Tier 4 Final)/Korea Tier 4 Final/EU Stage V emission standards.





The new **Cat® D2** succeeds the renowned D4K2 with superior performance and the broadest choice of technology features to help you get the most from your dozer. Nimble and responsive, it has power for dozing and finesse for grading. Fully hydrostatic transmission gives you seamless acceleration, so you can get the job done quickly.

# THE NEW CAT® D2

PERFORMANCE AND  
TECHNOLOGY



<b>D2</b>	68.8 kW/92 hp	8338 kg/18,382 lb
<b>D4K2</b>	68.8 kW/92 hp	8168 kg/18,007 lb

## NEW NAMES, SAME WORLD-CLASS PERFORMANCE

The update from D4K2 to D2 is part of an effort to make all Cat dozer model names simpler. Over the next couple of years, the Cat dozer range will be renamed from smallest to largest – D1 to D11 – with one model per size class and no more letter modifiers like “N,” “K,” “T.”

While the number may be different, the D2 gives you all the advantages of the D4K2 and so much more. The D2 delivers more technology, better visibility and more performance, helping you make the most of your equipment investment.



# SETTING THE STANDARD

FROM FIRST PASS  
TO FINISH GRADE



## IMPROVED VISIBILITY

The angle of the hood was increased to enhance the peripheral vision for the operator. This new sloped hood allows for better assessment of the work in front of the blade and job site awareness. Better visibility can equal less operator fatigue and more confidence in your work.

## GRADE TECHNOLOGY

GRADE with 3D and Slope Assist™ help achieve the best quality grading results, while new technologies make machine operation easier and more efficient.

## UP TO 10% IMPROVED FUEL ECONOMY

- + Lowers operating costs to the customer
- + Lowest fuel consumption in this size class
- + Still same great performance you've come to expect
- + Up to 20% improvement and no performance sacrifice with ECO mode active
- + Engine efficiency enhancements

# OPERATOR STATION

THE COMFORT AND CONTROL FOR A PRODUCTIVE SHIFT



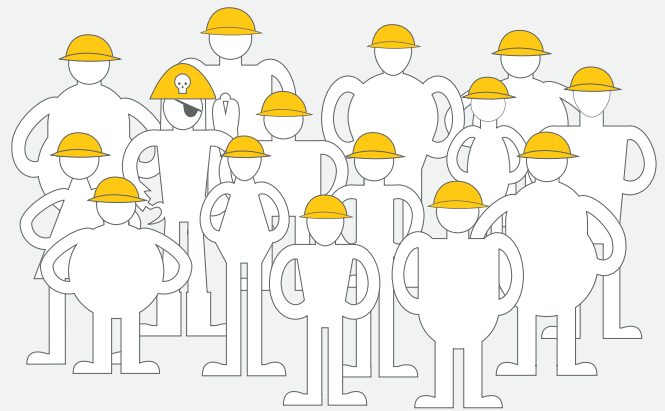
## EASY OPERATION

The hydrostatic transmission provides infinite speed control – just choose the speed and go. The load sensing system automatically optimizes ground speed based on load, for the greatest productivity and fuel efficiency.

## WORK SPACE

Regardless of operator stature, step into a spacious and comfortable cab that resets the industry standard. An optional heated and ventilated seat, along with heated joystick controls make the operator comfortable no matter what the conditions are outside. The seat height adjustment is now easier to access, and armrests can be quickly adjusted to operator's preference – no tools required!

## A CAB EVERY BODY CAN LOVE



6 Seat Adjustments

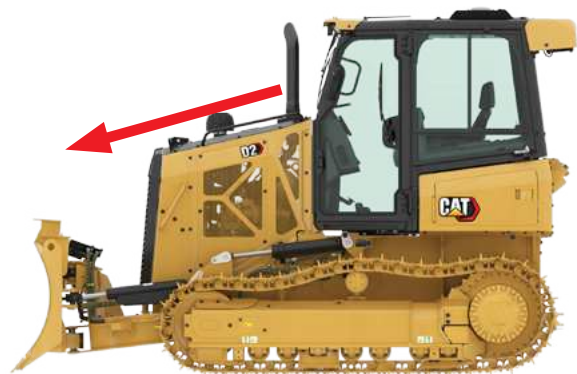






## UNBEATABLE VIEW

The best seat in the house just got an upgrade by way of improved visibility. The new, redesigned, sloped hood line allows the operator a wider peripheral view for better job site awareness and ease of operation.



## BIGGER, BETTER DISPLAY WITH CAMERA

This new and improved optional 10 inch (254 mm) touchscreen, color display is easy to use, with a great view of machine settings, rearview camera and Slope Indicate/Slope Assist screens. The large reversing camera gives the operator better visibility to the job site as well as less fatigue at the end of the day.

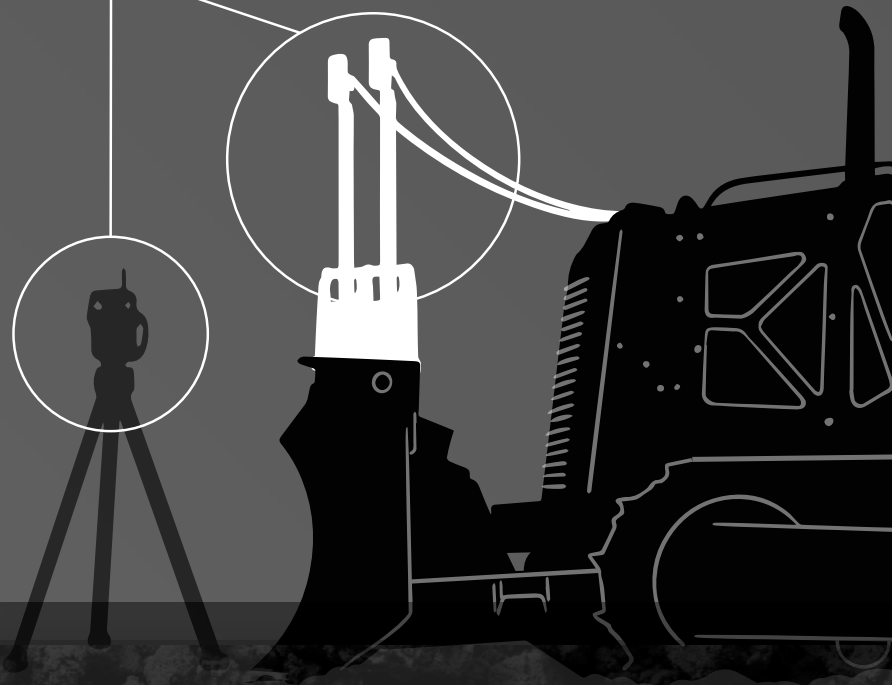
Additionally, the Key Features button gives the operator an overview of machine features, along with some helpful operating tips.



# CAT<sup>®</sup> GRADE

## 2D

- Cat Grade with Slope Assist
- Cat Grade with Laser



# SCALABLE SOLUTIONS

## 3D

- Integrated GNSS
- Blade-mounted GNSS
- Blade-mounted Universal Total Station



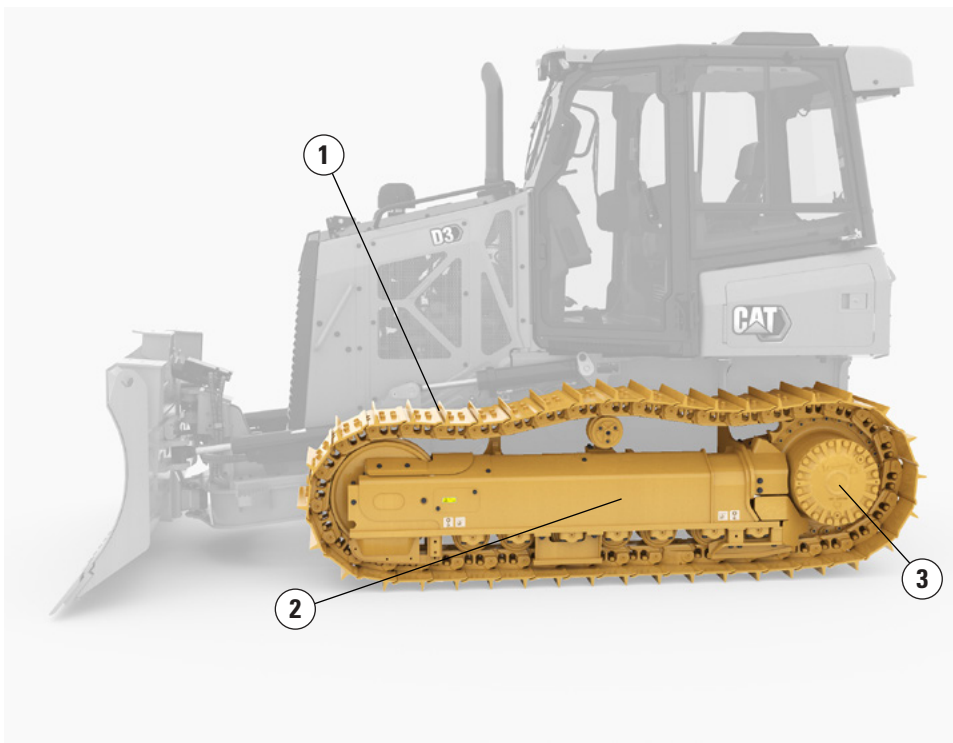
## VALUE TO YOU

- Optional integrated, 10-inch (254 mm) color touch screen display
- Stable Blade and Slope Indicate are standard
- Capability to scale up technology, and the flexibility to adapt different technology based on job site demands
- Partnership and support from your Cat or SITECH® dealer

# DURABILITY

## UNMATCHED POWER WITHOUT COMPRISING MACHINE LONGEVITY

The Small Dozer final drive provides a large, double reduction planetary gear set that allows the machine to push heavy loads. The undercarriage has a longer life, less down time and is standard on all Cat Dozers. A one piece mainframe/track roller frame design gives the machine the strength to carry pushing loads.



1. Two Track offerings: Sealed and Lubricated Track (SALT)/Abrasion
2. Track Roller Frame
3. Final Drive



### FINAL DRIVE

- + Large planetary gear set
- + Heavy pushing load spread over multiple gears
- + Longer life and less down time
- + Standard on all Cat dozers



### SALT

- + Cost effective
- + Eliminates internal pin and bushing wear
- + Long life
- + Universal applications



### ABRASION

- + Longer undercarriage wear life
- + No link assembly maintenance
- + No downtime for bushing turns
- + Less cost per hour by using full link life without a bushing turn
- + For high-abrasion applications





**PUSH MORE. GRADE MORE.**  
**POWER YOU CONTROL.**

---

## **AUTOMATIC TRACTION CONTROL**

Reduces track slippage with no operator interaction resulting in less ground disturbance and less passes.

---

## **POWER TURN**

Power to each track allows the dozer to carry heavy loads around turns.

---

## **COUNTER-ROTATION**

Quick and easy spot turns, along with the ability to control dozer direction during heavy side loads.

---

## **SMOOTH CONTROLS**

Controls with low operator effort provides predictable maneuverability.

# VERSATILITY

## SOLUTIONS TO SUIT YOUR UNIQUE APPLICATIONS AND WORK

We offer a full line-up of specialty dozer attachments and purpose built machine configurations for unique applications.

### Configure your machine to the application.

#### FORESTRY

- + Sweeps
- + Screens
- + Hinged radiator grill
- + External Precleaner

#### PLUS

- + Fire plow – fire suppression
- + Ship hold – bulk material handling operations

#### WINCH

- + Retrieval – great performance, easy to install
- + High performance – maximum line speed and pull

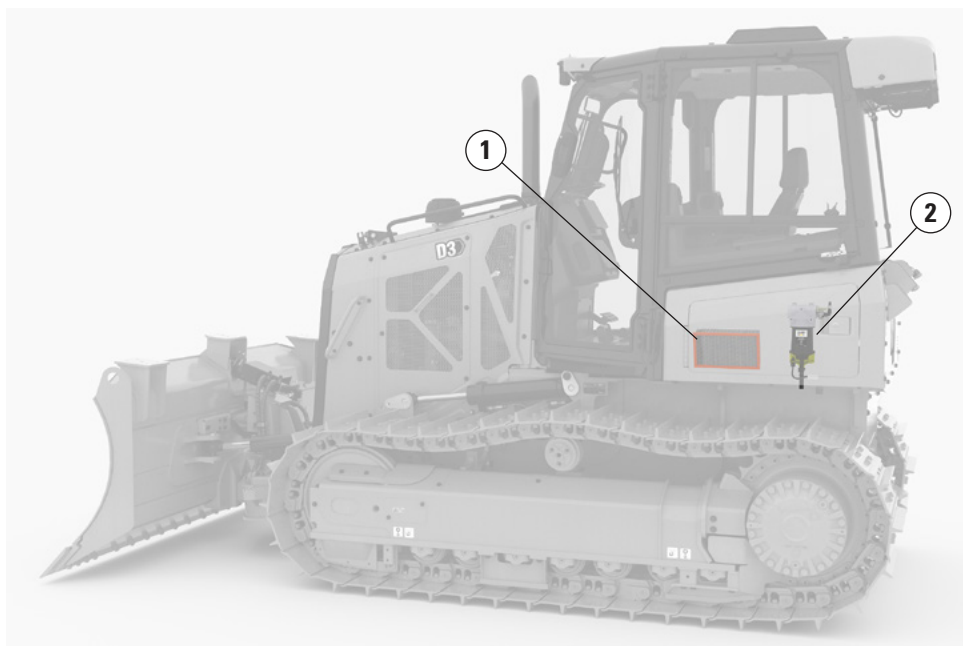
#### RIPPER

- + Parallelogram linkage
- + 3 shank

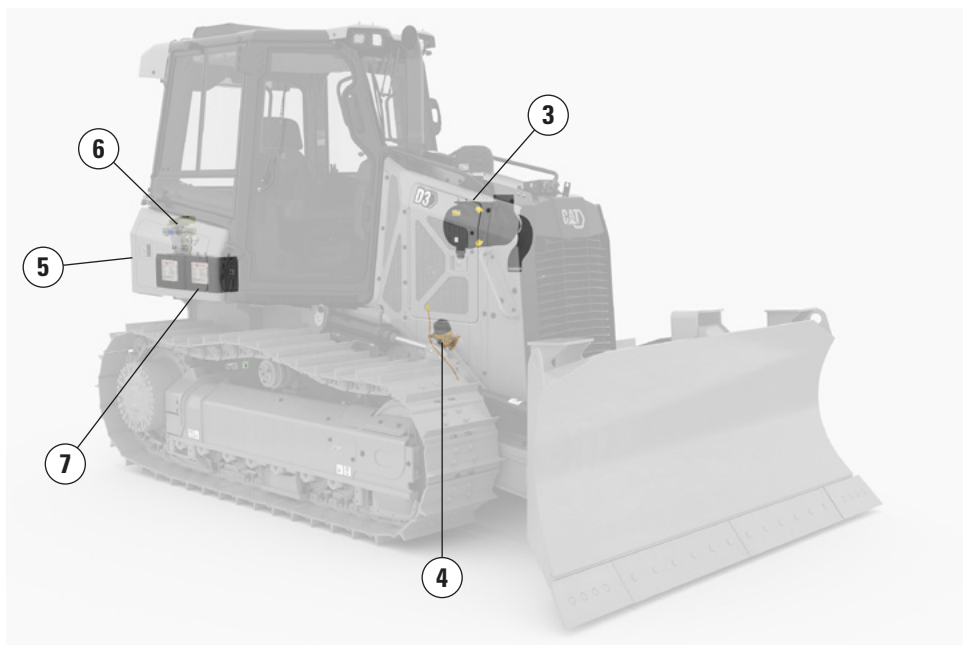


# MAINTENANCE

## MAKING UPKEEP MANAGEABLE



The Next Generation Small Dozers are easier than ever to service with ground level access to daily maintenance areas. Additionally, there are new options available to further simplify service with the turbine-type precleaner, reversing fan, and hinged radiator grill.



1. Cab air filter
2. Fuel filter
3. Engine air filter
4. Engine oil filter
5. Master disconnect switch
6. Hydraulic oil filter
7. Batteries

## CAT DEALER SUPPORT

The Cat Dealer support network is truly the best in the business. They are there to support customers with the parts and service that optimize machine performance and life.



# CAT LINK TECHNOLOGY

## TAKES THE GUESSWORK OUT OF MANAGING YOUR EQUIPMENT

**CAT LINK** telematics technology helps take the complexity out of managing your job sites – by gathering data generated by your equipment, materials, and people – and serving it up to you in customizable formats.

### **CAT PRODUCT LINK™**

Product Link™ collects data automatically and accurately from your assets – any type and any brand. Information such as location, hours, fuel usage, productivity, idle time, maintenance alerts, diagnostic codes, and machine health can be viewed online through web and mobile applications.



### **VISIONLINK®**

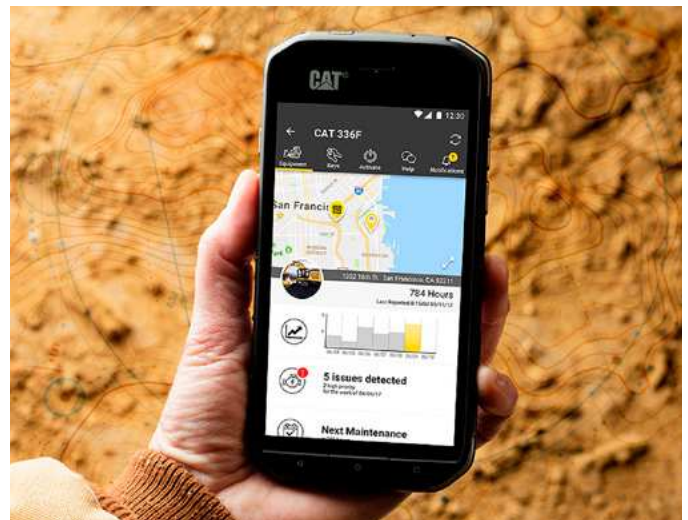
Access information anytime, anywhere with VisionLink® – and use it to make informed decisions that boost productivity, lower costs, simplify maintenance, and improve safety and security on your job site. With different subscription level options, your Cat dealer can help you configure exactly what you need to connect your fleet and manage your business, without paying for extras you don't want. Subscriptions are available with cellular or satellite reporting or both.



### **REMOTE SERVICES**

The Cat App helps you manage your assets – at any time – right from your smart device. See fleet location and hours, get critical required maintenance alerts, and even request service from your local Cat dealer.

- + **Remote Flash** – get software updates to one or more machines remotely. You just need a designated person close to the machine to initiate/confirm the update.
- + **Remote Grade** lets you wirelessly manage site plans via Trimble Connect Services.
- + **Operator ID** lets you track machine operation by individual operator using the main display and Product Link.



# TECHNICAL SPECIFICATIONS

See [cat.com](http://cat.com) for complete specifications.

ENGINE			
Engine Model	Cat C3.6		
Emissions	U.S. EPA Tier 4 Final, Japan 2014 (Tier 4 Final), Korea Tier 4 Final, EU Stage V		
Build Number	12A		
Power Train	Hydrostatic		
Net Power* – 2,200 rpm			
SAE J1349	68.8 kW	92 hp	
ISO 9249, 80/1269/EEC	68.8 kW	92 hp	
Displacement	3.6 L	220 in³	
*Net power is tested per ISO 9249:2007 and SAE J1349:2011 and as advertised is the power available at the flywheel when the engine is equipped with fan, air intake system, exhaust system and alternator.			
All non-road Tier 4 Final, Stage V, Japan 2014 (Tier 4 Final) and Korea Tier 4 Final diesel engines are required to use only Ultra Low Sulfur Diesel (ULSD) fuels containing 15 ppm EPA/10 ppm EU (mg/kg) sulfur or less. Biodiesel blends up to B20 (20% blend by volume) are acceptable when blended with 15 ppm (mg/kg) sulfur or less ULSD. B20 should meet ASTM D7467 specification (biodiesel blend stock should meet Cat biodiesel spec, ASTM D6751 or EN 14214). Cat DEO-ULS™ or oils that meet the Cat ECF-3, API CJ-4, and ACEA E9 specification are required. Consult your OMM for further machine specific fuel recommendations.			
Diesel Exhaust Fluid (DEF) used in Cat Selective Catalytic Reduction (SCR) systems must meet the requirements outlined in the International Organization for Standardization (ISO) standard 22241.			
The air conditioning system on this machine contains the fluorinated greenhouse gas refrigerant R134a (Global Warming Potential = 1430). The system contains 1.8 kg of refrigerant which has a CO <sub>2</sub> equivalent of 2.574 metric tonnes.			

SERVICE REFILL CAPACITIES		
Fuel Tank	195 L	51.5 gal
Crankcase and Filter	10.5 L	2.8 gal
Final Drives (each side)	10 L	2.6 gal
Final Drives, LGP (each side)	10 L	2.6 gal
Cooling System	19 L	5.0 gal
Transmission/Hydraulic Tank	90 L	23.8 gal
Diesel Exhaust Fluid (DEF) Tank	19 L	4.9 gal

	OPERATING WEIGHT	GROUND PRESSURE
Standard	8338 kg   18,382 lb	39.5 kPa   5.7 psi
LGP	8648 kg   19,066 lb	29.7 kPa   4.3 psi
For machine with ripper, add 554 kg/1,222 lb.		
Specifications shown are for machine equipped with dozer blade, EROPS cab, back up alarm, operator, coolant, lubricants and full fuel tank.		

BLADES	CAPACITY	WIDTH
Standard	1.98 m³   2.59 yd³	2782 mm   109.5 in
Intermediate	1.50 m³   1.96 yd³	2921 mm   115 in
LGP	1.85 m³   2.42 yd³	3149 mm   124 in

DIMENSIONS*	STANDARD	LGP
Track Gauge	1550 mm (61.0 in)	1725 mm (67.9 in)
Width of Tractor (standard shoe)	2010 mm (79.1 in)	2360 mm (92.9 in)
Tractor Height	2765 mm (108.9 in)	2765 mm (108.9 in)
Overall Length (with blade)	4281 mm (168.5 in)	4272 mm (168.2 in)
Length of Basic Tractor (without blade)	3290 mm (129.5 in)	3290 mm (129.5 in)
Ground Clearance	332 mm (13 in)	332 mm (13 in)
With the Following Attachments, Add to Basic Tractor Length:		
Ripper	1177 mm (46.3 in)	1177 mm (46.3 in)
*Abrasion Undercarriage		

Configurations and features may vary by region. Please consult your Cat dealer for availability in your area.

# STANDARD & OPTIONAL EQUIPMENT

Standard and optional equipment may vary. Consult your Cat dealer for details.

POWER TRAIN	STANDARD	OPTIONAL
Air cleaner with precleaner, automatic dust ejection and underhood intake	•	
Air cleaner with external precleaner		•
Aluminum bar plate cooling system (radiator, power train)	•	
Automatic traction control	•	
Cat C3.6 diesel engine	•	
Drive, auxiliary	•	
Dual path, closed loop, hydrostatic transmission	•	
Electric fuel pump	•	
Fuel/water separator	•	
Installation, winch		•
Turbocharged aftercooled	•	
ELECTRICAL	STANDARD	OPTIONAL
Alarm, backup	•	
Alternator, 150 amp, heavy duty	•	
Batteries, heavy duty, maintenance free, 1,000 CCA	•	
Diagnostic connector	•	
Four integrated front halogen lights, two rear halogen	•	
Four integrated front LED lights, two rear LED		•
Horn, electric	•	
Starter, electric, 12 V, heavy duty	•	
UNDERCARRIAGE	STANDARD	OPTIONAL
SALT undercarriage (43 section)	•	
Abrasion undercarriage (38 section)		•
Track Pairs		
Track, 460 mm (18 in)		•
Track, 635 mm (25 in)		•
Carrier rollers	•	
Guards, front/rear guiding	•	
Seven roller track frame	•	
Track adjusters, hydraulic	•	
Track rollers, lifetime lubricated	•	

HYDRAULIC	STANDARD	OPTIONAL
Hydraulic pump and oil	•	
Four valve for use with ripper		•
Four valve for use with winch		•
Single lever, three function control	•	
Three valve hydraulics	•	
CAT TECHNOLOGY	STANDARD	OPTIONAL
Cat GRADE with Slope Assist		•
Cat GRADE with 3D		•
Cat Product Link PLE643/PLE743 Cellular	•	
Cat Product Link PLE683/PLE783 Cellular/Satellite		•
Full-color 10 in (254 mm) touchscreen grade display		•
Power Pitch		•
Slope Indicate	•	
Stable blade	•	
ATTACHMENTS	STANDARD	OPTIONAL
Rigid drawbar	•	
Drawbar, towing		•
Front pull device	•	
Machine security system		•
Mounting, winch		•
Ripper, parallelogram, includes three shanks and teeth		•
Winch, hydraulic, high performance		•
Winch, hydraulic, retrieval		•
OTHER	STANDARD	OPTIONAL
Heater, engine, coolant 120 V/240 V		•
Starting aid, ether		•

Not all features are available in all regions. Please check with your local Cat dealer for specific offering availability in your area.

For additional information, refer to the Technical Specifications brochure available at [www.cat.com](http://www.cat.com) or your Cat dealer.



## STANDARD & OPTIONAL EQUIPMENT

Standard and optional equipment may vary. Consult your Cat dealer for details.

OPERATOR ENVIRONMENT	STANDARD	OPTIONAL
Armrests, adjustable	•	
Cab, with air conditioning		•
Cab, polycarbonate windows and air conditioning		•
Coat hook	•	
Controls, seat mounted, fore/aft adjustment	•	
Cup holders	•	
Eco Mode	•	
Electronic Monitoring system with gauge: <ul style="list-style-type: none"> <li>– Chassis slope indication</li> <li>– Diesel exhaust fluid (DEF)</li> <li>– Engine coolant temperature</li> <li>– Fuel level</li> <li>– Hydraulic oil temperature</li> </ul>	•	
Electronic security system	•	
Engine air cleaner service indicator	•	
Engine RPM and gear display	•	
Floor mat, rubber, heavy duty	•	
Foot pads, dash	•	
Hour meter, electronic	•	
Independent forward/reverse speed settings	•	
Mirror, rearview, inside	•	
Power port, 12 volt	•	
Radio, AM/FM Bluetooth®		•
ROPS/FOPS canopy	•	
Seat, air suspended, cloth or vinyl	•	
Seat, air suspension, choice of: <ul style="list-style-type: none"> <li>– Vinyl, heated seat with heated controls</li> <li>– Cloth, heated seat with heated controls</li> <li>– Cloth, heated and ventilated seat with heated controls</li> </ul>		•
Seatbelt, hi-vis retractable 76 mm (3")	•	
Seatbelt buckling indicator/reminder	•	
Single pedal combining decel and brake functions	•	
Sound suppression		•
Speed recall	•	
Storage compartment	•	
Throttle switch, rotary	•	
Travel speed limiter, electronic	•	

**Not all features are available in all regions. Please check with your local Cat dealer for specific offering availability in your area.**

For additional information, refer to the Technical Specifications brochure available at [www.cat.com](http://www.cat.com) or your Cat dealer.

For more complete information on Cat products, dealer services and industry solutions, visit us on the web at [www.cat.com](http://www.cat.com)

© 2020 Caterpillar. All Rights Reserved.

VisionLink and SITECH are trademarks of Trimble Navigation Limited, registered in the United States and in other countries.

Materials and specifications are subject to change without notice. Featured machines in photos may include additional equipment. See your Cat dealer for available options.

CAT, CATERPILLAR, LET'S DO THE WORK, their respective logos, "Caterpillar Corporate Yellow," the "Power Edge" and Cat "Modern Hex" trade dress as well as corporate and product identity used herein, are trademarks of Caterpillar and may not be used without permission.  
[www.cat.com](http://www.cat.com) [www.caterpillar.com](http://www.caterpillar.com)

AEHQ8308  
Build Number: 12A  
(N Am, EU, Aus-NZ, Japan)

