

Distributor:	Linder Machinery
Item # 16	

KOMATSU D39EX-24 BUILD SHEET

Standard Equipment for Base Machine

Engine and related items:

Engine, KOMATSU SAA4D95LE-7, 3.26 L displacement

direct injection, Komatsu variable flow turbocharged, aftercooled,
EPA Tier 4 Final emission certified, diesel
Net HP: 105HP (79kW) 2200 RPM (ISO9249 / SAE J1349), Fan at min speed
KDOC - After-Treatment Assembly
Selective Catalytic Reduction (SCR) and Diesel Exhaust Fluid (DEF)
with heated thermostatically controlled DEF lines, pump and tank
Large-capacity rear mounted cooling system (side by side coolers)
Air cleaner, double element type
Above hood air intake pipe with centrifugal pre-cleaner
Grid heater - starting aid in cold weather
Fan, reversible, electronic control, hydraulic driven, Manual reversing
Exhaust pipe with guard
Automatic deaeration for fuel line
Poor fuel (contamination) arrangement (10 micron pre-filter w/
water separator and 2 micron dual layer primary)
Strainer, fuel tank fill
Rear gas strut assisted swing open radiator mask
Reservoir tank, radiator with level gauge

Electric system:

Alternator, 85 Ampere (24V)
Back-up alarm
Engine shutdown secondary switch
Sealed harness connectors
Batteries, 2 x 12V, 184Ah
Starter, 4.5 kW (24V)
Battery master disconnect switch

Power Train and Steering Controls

Electronically controlled HST dual mode (Customizable Quick shift -
3 speed / Variable -20 speed) settings
Palm Command Control (PCCS) with electronic control
Reverse speed presets
Track counter rotation
Combination brake / decel pedal
Undercarriage:
PLUS* rotating bushing long life assembly
Self adjusting Idler support with recoil spring
Track frames, with 1 carrier rollers
Track on ground - 2345 mm (7'8")
Track roller guards, ends and center
Track shoe assembly:
D39EX: 20" (510 mm) single grouser (PLUS)

Sprockets, segmented

Guards and covers:
Crankcase guard and under guard and front pull hook
Engine hood and side panels with locks
(6mm plate steel)
Sprocket inner guard

BLADE:

PAT BLADE 107"

Operator environment:

Cab: integrated ROPS (ISO 3471) & FOPS with front, rear and

door wipers, 3 front and 2 rear work lights
Auto climate control air conditioner: with heater, defroster & pressurizer
Radio, AM/FM with auxiliary jack
Foot rests, high mounted
Seat: air -suspension type, cloth, fully adjustable, low-
back , head rest, fabric material, heated,
3" retractable seat belt with indicator light
Monitor: multi-function, 7 inch, high-resolution, color
E/P Working mode selection;
EMMS (Equipment Management Monitoring
System) including system monitoring with self
diagnostics, a maintenance reminder and fault code
memory storage, DEF level gauge, operator ID, and Auto-idle shutdown
Rear view monitoring system for ROPS CAB
PCCS transmission and implement control
Electronic fuel throttle control dial
12V Accessory outlets (2)
Cup holder
Rear view Mirror, Convex
Horn, electric
Provision mount bosses for screen and sweep installation (CAB only)

Hydraulics and controls:

Electronic Proportional Control (EPC) blade hydraulics with accumulator
Electronic blade float function
O-ring face seal hydraulic connections

Special arrangements:

High altitude arrangement (no fuel adjustment to 2,300 m (7,545 ft))
North American ambient temp arrangement,
-20°C (-4°F) through +50°C (+122°F) at Sea Level
OSHA Arrangement

Vandalism protection:

Filler cap and cover locks

Marks and plates, for USA and Puerto Rico

KOMTRAX , level 5
Paint, Komatsu standard
Grease gun holder (grease gun NOT included)
Shovel holder (shovel NOT included)
Parts book and O&M Manual

KOMATSU®

D39EX-24 **D39PX-24**

Tier 4 Final Engine

CRAWLER DOZER

D39



Photos may include optional equipment.

NET HORSEPOWER

105 HP @ 2200 rpm
78 kW @ 2200 rpm

OPERATING WEIGHT

D39EX-24: 21,891 lb 9930 kg
D39PX-24: 22,817 lb 10350 kg

BLADE CAPACITY

Power Angle Tilt (PAT) Dozer:
D39EX-24: 2.89 yd³ 2.21 m³
D39PX-24: 3.14 yd³ 2.40 m³

CONTROL FEATURES

D39EX/PX-24

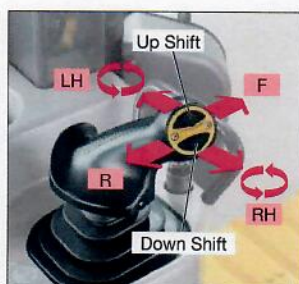


Palm Command Control System (PCCS) Levers

Komatsu's ergonomically designed PCCS handles create an operating environment with complete operator control.

PCCS

The low-effort PCCS joystick controls all directional movements, including machine travel speed as well as counter-rotation.



Electronic controlled hydraulic system

Electronic controlled palm commanded joystick provides precise blade control. New blade angling switch operation provides easier and predictable blade control.



HST with Electronic Control

The D39EX/PX-24 is equipped with Komatsu-designed HST that allows for Quick-Shift or variable speed selection. The HST consists of dual-path closed-circuits, with two variable displacement piston pumps and two variable displacement travel motors. Hydrostatic steering eliminates steering clutches and brakes, providing smooth, powerful turns. Fully electronic control provides complete automatic shifting and enables smooth control. Engine speed is controlled using an electronic fuel control dial.

One-Pedal Design (Decelerator/Brake Pedal) Controls Speed, During Operation

Machine operation is simple because brake function has been integrated into the decelerator pedal. Machine travel speed can be controlled using one pedal. The pedal function can be changed by a mode selector switch.

Decelerator mode: The pedal modulates engine rpms and vehicle travel speed. It can be used for all applications.

Brake mode: The pedal modulates vehicle travel speed while maintaining high-engine speed. This mode can be helpful to maintain work-equipment speed, while using the brake function.



WORKING ENVIRONMENT

Integrated ROPS (ISO 3471) Cab

The D39EX/PX-24 has an integrated ROPS (ISO 3471) cab. High rigidity and superb sealing performance sharply reduce noise and vibration for the operator and discourage dust from entering the cab. In addition, side visibility is increased because external ROPS (ISO 3471) structure and posts are not required.



Comfortable Ride with Cab Damper Mounting

The D39EX/PX-24's cab mount uses a cab damper system that provides excellent shock and vibration absorption which conventional mounting systems are unable to match. The silicon-oil-filled cab damper mount helps to isolate the cab from the machine body, suppressing vibration and providing a quiet, comfortable operating environment.

Auxiliary Input Jack & Two DC12 Volt Electrical Outlets

By connecting an auxiliary device to this plug input, the operator can play audio from a mobile device through the machine's sound system. Two DC12 volt electrical outlets can be used as a power source for radio equipment or others. One DC24 volt cigarette lighter.



Two DC12 V
electrical
outlets

Auxiliary input jack

Comfortable Ride with Heated Operator Seat

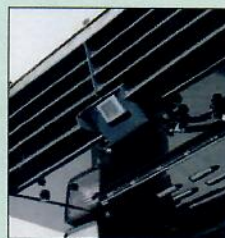
The operator seat has adjustable lumbar support, tilt and an electric heater. It is easy to adjust to the operator's shape and comfortable operation is possible in a variety of conditions. Also, the seat heat makes it possible to work comfortably in the winter.



ADDITIONAL OPERATOR CONVENIENCE EQUIPMENT

Rear view monitor system

On the large LCD color monitor, the operator can view, through one camera, areas directly behind the machine. This camera can be synchronized with reverse operation.



Secondary engine shutdown switch

A new secondary switch has been added at the side of the front console to shut down the engine in an emergency.



KOMATSU PARTS & SERVICE SUPPORT



KOMATSU CARE®

Program Includes:

*The D39EX/PX-24 comes standard with complimentary factory scheduled maintenance for the first 3 years or 2,000 Hours, whichever comes first.

Planned Maintenance Intervals at:

500/1000/1500/2000 hour intervals. (250 hr. initial interval for some products) Complimentary Maintenance Interval includes: Replacement of Oils & Fluid Filters with genuine Komatsu Parts, 50-Point inspection, Komatsu Oil & Wear Analysis Sampling (KOWA) / Travel & Mileage (distance set by distributor; additional charges may apply) Komatsu CARE services are available from every Komatsu Distributor in the U.S. and Canada.

Benefits of Using Komatsu CARE

- Assurance of Proper Maintenance with OEM Parts & Service
- Increased Uptime & Efficiency
- Factory Certified Technicians Performing Work
- Cost of Ownership Savings
- Transferable Upon Resale

Complimentary SCR System Maintenance

The D39EX-24 also includes 2 factory recommended services of the Selective Catalytic Reduction (SCR) Diesel exhaust fluid (DEF) system during the first 5 years—no hour limit including:

- Factory recommended DEF tank flush and strainer cleaning at 4,500 hours and 9,000 hours

Komatsu CARE® – Advantage Extended Coverage

- Extended Coverage can provide peace of mind by protecting customers from unplanned expenses that effect cash flow
- Purchasing extended coverage locks-in the cost of covered parts and labor for the coverage period and helps turn these into fixed costs



* Some exclusions apply. Please contact your Komatsu distributor for specific program details.



Komatsu Parts Support

- 24/7/365 to fulfill your parts needs
- 9 parts Distribution Centers strategically located across the U.S. and Canada
- Distributor network of more than 300 locations across U.S. and Canada to serve you
- Online part ordering through Komatsu eParts
- Remanufactured components with same-as-new warranties at a significant cost reduction



Komatsu Oil and Wear Analysis (KOWA)

- KOWA detects fuel dilution, coolant leaks, and measures wear metals
- Proactively maintain your equipment
- Maximize availability and performance
- Can identify potential problems before they lead to major repairs
- Reduce life cycle cost by extending component life

D39EX/PX-24

KOMTRAX EQUIPMENT MONITORING

GET THE WHOLE STORY WITH
KOMTRAX®

✓ WHAT

- KOMTRAX is Komatsu's remote equipment monitoring and management system
- KOMTRAX **continuously monitors and records** machine health and operational data
- Information such as fuel consumption, utilization, and a detailed history **lowering owning and operating cost**

✓ WHO

- KOMTRAX is **standard** equipment on all Komatsu construction products

✓ WHEN

- Know when your machines are **running or idling** and make decisions that will improve your fleet utilization
- Detailed movement records ensure you know when and where your equipment is moved
- Up to date records allow you to **know when maintenance is due** and help you plan for future maintenance needs

✓ WHERE

- KOMTRAX data **can be accessed virtually anywhere** through your computer, the web or your smart phone
- Automatic alerts keep fleet managers up to date on the latest machine notifications

✓ WHY

- Knowledge is power - **make informed decisions** to manage your fleet better
- Knowing your idle time and fuel consumption will help maximize your machine efficiency
- **Take control of your equipment** - any time, anywhere



KOMTRAX®

For construction and compact equipment.

KOMTRAX Plus®

For production and mining class machines.

SPECIFICATIONS



ENGINE

Model.....	Komatsu SAA4D95LE-7*
Type.....	4-cycle, watercooled, direct injection
Aspiration.....	Variable flow, turbocharged, air-to-air aftercooled
Number of cylinders.....	4
Bore x stroke.....	95 mm x 115 mm 3.75" x 4.52"
Piston displacement.....	3.26 ltr 199 in³
Governor.....	All-speed, electronic
Horsepower	
SAE J1995.....	Gross 79 kW 107 HP
ISO 9249 / SAE J1349.....	Net 78 kW 105 HP
Rated rpm.....	2200 rpm
Fan drive type.....	Hydraulic
Lubrication system	
Method.....	Gear pump, force lubrication
Filter.....	Full-flow

*EPA Tier 4 Final emissions certified

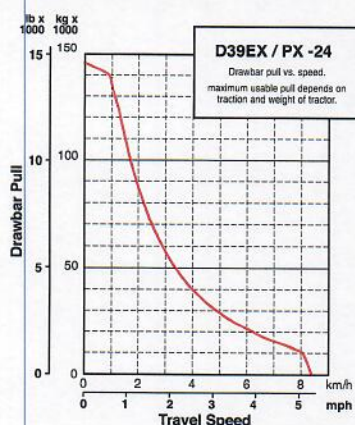


HYDROSTATIC TRANSMISSION

Dual-path, hydrostatic transmission provides infinite speed changes up to 8.5 km/h **5.3 mph**. The variable capacity travel motors allow the operator to select the optimum speed to match specific jobs. Travel control lock lever and neutral switch.

Travel speed (quick shift mode)*	Forward	Reverse
1st	0-3.4 km/h 0-2.1 mph	0-4.1 km/h 0-2.5 mph
2nd	0-5.6 km/h 0-3.5 mph	0-6.5 km/h 0-4.0 mph
3rd	0-8.5 km/h 0-5.3 mph	0-8.5 km/h 0-5.3 mph
Travel speed (variable mode)	Forward	Reverse
	0-8.5 km/h 0-5.3 mph	0-8.5 km/h 0-5.3 mph

*Quick shift speeds are adjustable in the monitor.



FINAL DRIVES

In-shoe mounted, axial-piston-type travel motors, with integrated two-stage planetary gear reduction. Compact, in-shoe mount reduces risk of damage by debris. Bolt-on sprocket ring with triple labyrinth seal design.



STEERING SYSTEM

Palm Command Control System (PCCS) joystick control for all directional movements. Pushing the joystick forward results in forward machine travel, while pulling it back reverses the machine. Simply tilt the joystick to the left or right to make a turn. Tilting the joystick fully to the left or right activates counter-rotation.

Hydrostatic Transmission (HST) provides smooth, powerful turns. Fully electronic control enables smooth control that can be adjusted in the monitor. The PCCS utilizes shift buttons to increase and decrease speed.

Minimum turning radius*

D39EX-24..... 2.2 m **87"**

D39PX-24..... 2.4 m **94"**

*As measured by track marks on the ground at pivot turn.



UNDERCARRIAGE

Suspension..... Rigid type
Track roller frame Monocoque, large section, durable construction
Rollers & idlers Lubricated track rollers

Sealed & lubricated track...Track tension easily adjusted w/grease gun

	D39EX-24	D39PX-24 Narrow	D39PX-24 Wide
Number of track rollers (each side)	6	6	6
Type of shoes (standard)	Single grouser	Single grouser	Single grouser
Number of shoes (each side)	39	39	39
Grouser height	mm in 47 1.9"	47 1.9"	47 1.9"
Shoe width (standard)	mm in 510 20"	635 25"	700 27.5"
Ground contact area	cm ² 23919	29782	32970
	in ² 3,708	4,616	5,110
Ground pressure	kPa 36.1	30.1	27.4
(with dozer, ROPS cab)	kgf/cm ² 0.37	0.31	0.28
(ISO 16754)	psi 5.24	4.39	3.98
Track gauge	mm ft.in 1620 5'4"	1810 5'11"	1810 5'11"
Length of track on ground	mm ft.in 2345 7'8"	2345 7'8"	2345 7'8"



SERVICE REFILL CAPACITIES

Coolant	34 ltr	9.0 U.S. gal
Fuel tank	190 ltr	50.2 U.S. gal
Engine oil	11 ltr	2.9 U.S. gal
Hydraulic tank.....	64 ltr	17 U.S. gal
Final drive (each side).....	3.5 ltr	0.9 U.S. gal
Diesel Exhaust Fluid (DEF) tank	10 ltr	2.6 U.S. gal



OPERATING WEIGHT (APPROXIMATE)

Tractor weight:

Including ROPS cab, U frame for power angle tilt dozer, rated capacity of lubricant, coolant, full fuel tank, operator, and standard equipment.

D39EX-24..... 8790 kg **19,379 lb**

D39PX-24..... 9140 kg **20,150 lb**

Operating weight:

Including Power Angle Tilt dozer, ROPS cab, operator, standard equipment, rated capacity of lubricant, hydraulic control unit, coolant, and full fuel tank.

D39EX-24..... 9930 kg **21,891 lb**

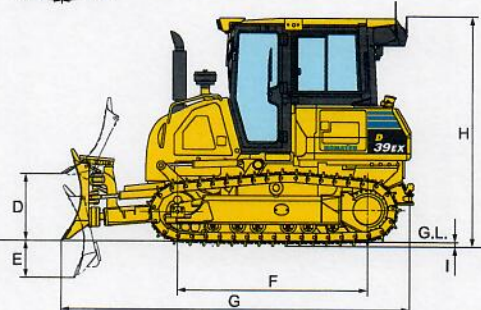
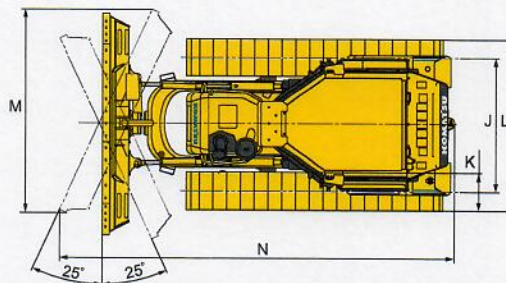
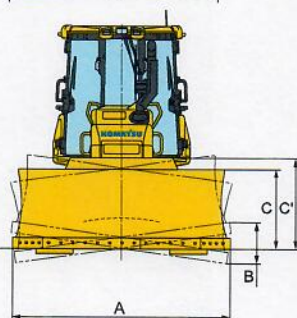
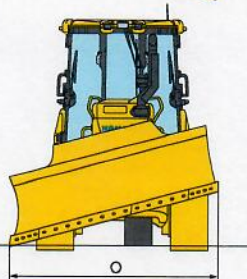
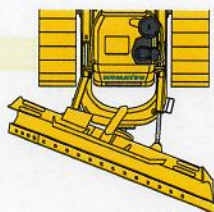
D39PX-24..... 10350 kg **22,817 lb**



DIMENSIONS

	D39EX-24	D39PX-24
A	2710 mm 8'11"	3250 mm 10'8"
B	365 mm 1'2"	440 mm 1'5"
C	980 mm 3'3"	910 mm 3'
C'	1120 mm 3'8"	1105 mm 3'7"
D	820 mm 2'8"	820 mm 2'8"
E	440 mm 1'5"	440 mm 1'5"
F	2345 mm 7'8"	2345 mm 7'8"
G	4385 mm 14'5"	4385 mm 14'5"
H	2850 mm 9'4"	2850 mm 9'4"
I	47 mm 1.9"	47 mm 1.9"
J	1620 mm 5'4"	1810 mm 5'11"
K	460 mm 1'6"	635 mm 2'1"
L	2080 mm 6'10"	2445 mm 8'2"
M	2495 mm 8'2"	2990 mm 9'10"
N	4910 mm 16'1"	5020 mm 16'6"
O	2475 mm 8'1"	2940 mm 9'8"

Ground clearance 390 mm **15"**



HYDRAULIC SYSTEM

Closed-Center Load Sensing System (CLSS) designed for precise and responsive control, and for efficient simultaneous operation.

Hydraulic control unit:

All spool control valves externally mounted remote to the hydraulic tank. Piston-type hydraulic pump with capacity (discharge flow) of 99 ltr/min **26.2 U.S. gal/min** at rated engine rpm.

Relief valve setting 27.4 MPa 280 kg/cm² **3,974 psi**
Hydraulic cylinders Double-acting, piston type

	Number of cylinders	Bore
Blade lift	2	75 mm 3"
Blade tilt	1	90 mm 3.5"
Blade angle	2	80 mm 3.2"

Hydraulic oil capacity (refill):

Power angle tilt dozer 64 ltr **17 U.S. gal**

Control valves:

3-spool control valve for Power Angle Tilt dozer

Positions:

Blade lift Raise, hold, lower, and float

Blade tilt Right, hold, and left

Blade angle Right, hold, and left

Additional control valve required for ripper

Positions:

Ripper lift Raise, hold, and lower



DOZER EQUIPMENT

	Overall Length With Dozer* mm ft.in	Blade Capacity m ³ yd ³	Blade Width x Height mm ft.in	Max. Lift Above Ground mm ft.in	Max. Drop Below Ground mm ft.in	Max. Tilt Adjustment mm ft.in	Blade Angle
D39EX-24	4385 mm	2.21 m ³	2710 mm x 980 mm	820 mm	440 mm	365 mm	25°
Standard Blade	14'5"	2.89 yd³	8'11" x 3'3"	2'8"	1'5"	1'3"	
D39PX-24	4385 mm	2.40 m ³	3250 mm x 910 mm	820 mm	440 mm	440 mm	25°
Standard Blade	14'5"	3.14 yd³	10'8" x 3'	2'8"	1'5"	1'5"	
D39PX-24	4385 mm	2.22 m ³	2980 mm x 910 mm	820 mm	440 mm	405 mm	25°
Narrow Blade	14'5"	2.90 yd³	9'9" x 3'	2'8"	1'5"	1'4"	

Blade capacities are based on the recommended practice ISO 9246. Use of high-tensile-strength steel in moldboard for strengthened blade construction.

* Including hitch



STANDARD EQUIPMENT FOR BASE MACHINE*

- Accumulator for Electric Proportional Control (EPC)
- Air cleaner, dry, double element type with caution lamp on monitor
- Air conditioner (A/C)
- Air inlet
- Alternator, 24 V/85 A
- Back-up alarm
- Batteries, large capacity 24 V/92 Ah
- Cab accessories
 - 12 V x 2 power supply
 - Cup holder
 - Rear view mirror
 - Rear view monitor system
- Crankcase guard and underguard
- Decelerator/brake pedal (Single pedal)
- Electronically controlled Hydrostatic Transmission (HST) with quick-shift and variable speed settings
- Electronic monitor panel with on-board diagnostics
- Engine hood and side panels
- Engine, KOMATSU SAA4D95LE-7, gross output of 80 kW **107 HP**, direct injection, water-cooled turbocharged, air-to-air aftercooler, cooled EGR, EPA Tier 4 Final and EU Stage 4 emissions certified
- Fan, hydraulic driven, electronic control
- Filler cap locks and cover locks
- Foot rest, high mounted
- Fuel pre-filter (10 micron) and fuel filter (2 micron)
- Grease gun holder
- High altitude arrangement (No fuel adjustment up to 2300 m)
- Horn
- Hydraulics for PAT dozer
- Intake pipe with precleaner
- Large high-resolution LCD
- Lunch box holder
- Marks and plates, English
- New Operator Identification System
- Palm Command Control System (PCCS) with electronic control for travel control
- Palm Command Control System (PCCS) with EPC for blade control
- Power turn with counter rotation
- Pullhook, front
- Radiator guard grid
- Radiator reserve tank
- Real-time DEF monitoring
- Rear-hinged radiator guard
- Reverse travel speed presets

- ROPS cab
 - Meets ISO 3471, SAE J/ISO 3471 ROPS standards, and ISO 3449 FOPS standard.
- Seat belt, 76 mm **3"** retractable
- Seat, air suspension, fabric, heated, low back, headrest
- Shovel holder
- Starting motor, 24 V/4.5 kW
- Self adjusting roller
- Sprockets, bolt-on
- Sprocket inner guard
- Track roller guards, end section
- Track shoe assembly (PLUS)
 - Sealed and lubricated
- D39EX-24: 510 mm **20"** single grouser shoe
- D39PX-24: 635 mm **25"** single grouser shoe
- Triple labyrinth final drive
- Water separator
- Worklamp (Front 3, rear 2)

Dozer assembly and rear-mounted equipment are not included in base machine price.



OPTIONAL EQUIPMENT

- Dozer assembly
- Hitch
- Hydraulics for rear equipment
- Track roller guard, full length

Multi-shank ripper (for D39EX only)

Weight.....	470 kg 1,036 lb
Beam length.....	1569 mm 62"
Maximum lift above ground.....	389 mm 15"
Maximum digging depth.....	336 mm 13"
Number of shanks.....	3

- 700 mm **27.5"** single grouser (PX)(PLUS)



ALLIED MANUFACTURER'S ATTACHMENTS (SHIPPED LOOSE)

- Guarding - Komatsu (Ken Garner)
 - Front sweeps 229 kg **584 lb**
 - Hinged cab side screens 44 kg **97 lb**
 - Hinged cab rear screen 43 kg **95 lb**
 - Rear A/C guard (requires front sweep) 61 kg **134 lb**
 - Poly panel door inserts 41 kg **91 lb**
- Hydraulic winch - Allied H4AT 685 kg **1,510 lb**



AESS901-02

©2017 Komatsu America Corp.

Printed in USA

AD06(2.5M)OTP

06/17 (EV-1)

KOMATSU®

Note: All comparisons and claims of improved performance made herein are made with respect to the prior Komatsu model unless otherwise specifically stated.

www.komatsuamerica.com

Komatsu America Corp. is an authorized licensee of Komatsu Ltd. Materials and specifications are subject to change without notice. **KOMATSU®**, Komatsu Care®, KOMTRAX® and KOMTRAX Plus® are registered trademarks of Komatsu Ltd. All other trademarks and service marks used herein are the property of Komatsu Ltd., Komatsu America Corp. or their respective owners or licensees.