

Distributor:	Linder Machinery
Item # 14	

KOMATSU D65EX-18 BUILD SHEET

Standard Equipment for Base Machine

Engine and its related items:

Engine, KOMATSU SAA6D114E-6, 8.9L displacement
 direct injection, Komatsu variable geometry turbocharged, aftercooled,
 EPA Tier 4 Final emission certified, diesel
Net HP: 217HP (162kW) 1950 RPM (ISO9249 / SAE J1349)
 KDPF - After-Treatment Assembly Consisting of KDOC and KCSF
 Selective Catalytic Reduction (SCR)
 Economy and Power modes
 Large-capacity wide-core cooling system
 Air cleaner, double element type
 Above hood air intake pipe with pre-cleaner
 Grid heater - starting aid in cold weather
 Fan, reversible, electronic control, hydraulic driven
 Exhaust pipe, curved
 Automatic deaeration for fuel line
 Poor fuel (contamination) arrangement (10 micron pre-filter w/
 water separator and 2 micron dual layer primary)
 Strainer, fuel tank fill

Electric system:

Alternator, 90 Ampere (24V)
 Back-up alarm
 Engine Idle auto shutdown with adjustable timer
 Engine shutdown secondary switch
 Seat belt caution alarm
 Sealed harness connectors
 Batteries, 2 x 12V, 930CCA
 Starter, 11.0 kW (24V)
 Lights, 4 front (hood mounted), 3 rear (left side)
 Sealed harness connectors
 Battery disconnect switch

Power Train and Steering Controls

Torqflow transmission with Auto/Manual shift modes
 Auto Shift Mode 4 forward, 4 reverse speeds
 Manual Shift Mode 3 forward, 3 reverse speeds
 Torque converter with automatic lock-up
 Electronic Control Modulation Valve (ECMV)
 Preset travel speed in forward & reverse direction
 Hydrostatic Steering System (HSS) w/counter-rotation
 Centralized testing connectors - power train
 Engine auto idle shutdown with adjustable timer

Undercarriage:

PLUS rotating bushing long life assembly
 Self adjusting Idler with recoil spring
 Track frames, with 2 carrier rollers
 Track roller guards, ends and guiding
 Track shoe assembly:
D65EX: 24" moderate service single grouser

Sprockets, segmented type

Guards and covers:

Engine hood & gull-wing perforated side covers
 HD radiator guard door, hinged, perforated
 Rear cover
 Under guards, hinged
 Front pull hook
 Fenders

Operator compartment:

Wide-core A/C condenser
 Bowl-type pre-cleaner for operator cab air inlet.
 Cab: integrated ROPS & FOPS with front, rear and
 door wipers, 2 front and 2 rear work lights
 Air conditioner: non-freon type, with
 heater, defroster & pressurizer
 Seat: air -suspension type, fully adjustable, low-
 back, head rest, fabric material, rotates 15 deg to right
 heated, Seat belt - 3" retractable, 330 lb operator rating
 Monitor, multi-function, 7 inch, high-resolution, color
 E/P Working mode selection;
 EMMS (Equipment Management Monitoring
 System) including system monitoring with self
 diagnostics, a maintenance reminder and fault code
 memory storage.
 Rear view monitoring system (single camera)
 PCCS transmission and implement control
 Electronic fuel control dial
 12V Accessory outlets (2)
 Cup holder
 Mirror, Convex
 Horn, electric
 Radio, AM/FM with auxiliary jack
 Engine shutdown secondary switch
 Seat belt caution alarm

Hydraulics and controls:

Blade hydraulics
 Rear hydraulics for Ripper or Winch
 EPC valve for machine control systems*
 Blade lift cylinders
 O-ring face seal hydraulic connections

Special arrangements:

High altitude arrangement (no fuel
 adjustment up to 3,000 m (9,842 ft)
 North American ambient temp arrangement,
 -20°C (-4°F) to +50°C (+122°F) at Sea Level
 OSHA Arrangement

Vandalism protection:

Lockable Filler cap and cover locks

Other Standard Equipment:

Marks and plates, for USA and Puerto Rico
 KOMTRAX, level 5
 Paint, Komatsu standard
 Shovel holder

***SN# 91310 & up:** factory installed Topcon
 Plug & Play wiring and brackets for after-
 market grade control will be discontinued and
 replaced by a factory installed *IB provision*
 for after-market grade control systems. The
 IB provision includes EPC valve, mounting
 bosses, and auto/manual switch on lever.

BLADE:

PAT BLADE ASSEMBLY WITH MANUAL PITCH ADJUSTMENT 152"

WALK-AROUND

D65EX/PX/WX-18



NET HORSEPOWER

217 HP @ 1950 rpm
162 kW @ 1950 rpm

OPERATING WEIGHT

SIGMADOZER®

D65EX-18: 46,892 lb 21270 kg
D65WX-18: 50,618 lb 22960 kg

Straight Tilt Dozer

D65PX-18: 50,331 lb 22830 kg

Power Angle Tilt Dozer

D65EX-18: 50,706 lb 23000 kg
D65PX-18: 51,963 lb 23570 kg
D65PX-18 Wide: 53,925 lb 24460 kg
D65WX-18: 52,801 lb 23950 kg

BLADE CAPACITY

SIGMADOZER®

D65EX-18: 7.3 yd³ 5.6 m³
D65WX-18: 7.7 yd³ 5.9 m³

Straight Tilt Dozer

D65PX-18: 4.8 yd³ 3.7 m³

Power Angle Tilt Dozer

D65EX-18: 5.6 yd³ 4.3 m³
D65PX-18: 5.8 yd³ 4.4 m³
D65PX-18 Wide: 5.8 yd³ 4.4 m³
D65WX-18: 5.8 yd³ 4.4 m³

Photos may include optional equipment.



OUTSTANDING PRODUCTIVITY & FUEL ECONOMY

Versatile Power Angle Tilt (PAT) blade can be useful in many applications.

Innovative SIGMADOZER® blade reduces digging resistance and smoothly rolls material up for increased blade loads.

Transmission with 4 shift modes improves fuel economy and productivity:

- Auto shift, torque converter lockup ON
- Auto shift, torque converter lockup OFF
- Manual shift, auto-downshift ON
- Manual shift, auto-downshift OFF

SAA6D114E-6 diesel engine provides excellent fuel economy. This engine is EPA Tier 4 Final emissions certified.

Variable Geometry Turbocharger (VGT) uses a hydraulic actuator to provide optimum air flow under all speed and load conditions.

Includes a wide core A/C condenser and bowl-type precleaner on the cab air intake for improved performance in high debris applications.

Komatsu Diesel Particulate Filter (KDPF) captures 90% of particulate matter and provides automatic regeneration that does not interfere with daily operation.

Selective Catalytic Reduction (SCR) removes NOx exhaust gases automatically by injecting DEF (diesel exhaust fluid) and is seamless to the operator.

Auto Idle Shutdown helps reduce non-productive engine idle time and operating costs.

KOMTRAX® sends information to a secure website including machine location, SMR, error codes, cautions, maintenance items, fuel usage, fuel levels, DEF levels, ambient conditions and much more.

Integrated ROPS cab features include:

- Large, quiet, and pressurized cab
- Improved visibility with integrated ROPS structure
- Heated air-suspension seat with high capacity
- Aux plug for audio player and two 12 volt connections

Large color monitor:

- Easy-to-read and use large seven inch high-resolution multi-color monitor
- Ecology guidance
- On-board diagnostics

Rearview Monitoring System (standard) displays the area behind the machine onto the wide landscape view color monitor screen.

D65PX-18 Wide PAT specification features a 14'1" (4295 mm) wide blade for maximum finish grading productivity and 36" (915 mm) track shoes for optimum floatation.

Parallel Link Undercarriage System (PLUS) with lubricated rotating bushings provides up to double the wear life and lower repair and maintenance costs.



Triple Labyrinth Final Drive improves durability and final drive life.

Ergonomic Operator Controls

- Palm Command Control System (PCCS) levers comfortably fit the operator's hands
- Automatic/manual selectable transmission shift mode
- Selected transmission shift mode remains saved in the monitor at engine key-off/key-on
- Forward/reverse shift pattern preset function

Komatsu designed and manufactured components

Blade Electronic Proportional Control EPC Valve (standard)

Facilitates installation of aftermarket grade control system.

Hydrostatic Steering System (HSS) has 25% more power for improved turning and counter-rotation.

Power and Economy Modes

Choose "Power" for maximum productivity, "Economy" for an extra 10% fuel savings under moderate loads.

Battery Disconnect Switch

Eliminates power draw during storage.

Operator Identification System tracks machine operation for up to 6 operators.

KOMTRAX EQUIPMENT MONITORING

GET THE WHOLE STORY WITH
KOMTRAX®

✓ WHAT

- KOMTRAX is Komatsu's remote equipment monitoring and management system
- KOMTRAX **continuously monitors and records** machine health and operational data
- Information such as fuel consumption, utilization, and a detailed history **lowering owning and operating cost**

✓ WHO

- KOMTRAX is **standard** equipment on all Komatsu construction products

✓ WHEN

- Know when your machines are **running or idling** and make decisions that will improve your fleet utilization
- Detailed movement records ensure you know when and where your equipment is moved
- Up to date records allow you to **know when maintenance is due** and help you plan for future maintenance needs

✓ WHERE

- KOMTRAX data **can be accessed virtually anywhere** through your computer, the web or your smart phone
- Automatic alerts keep fleet managers up to date on the latest machine notifications

✓ WHY

- Knowledge is power - **make informed decisions** to manage your fleet better
- Knowing your idle time and fuel consumption will help maximize your machine efficiency
- **Take control of your equipment** - any time, anywhere



KOMTRAX®

For construction and compact equipment.

KOMTRAX Plus®

For production and mining class machines.

SPECIFICATIONS



ENGINE

Model.....	Komatsu SAA6D114E-6*
Type.....	4-cycle, water-cooled, direct injection
Aspiration.....	Variable geometry turbocharged, air-to-air aftercooled
Number of cylinders.....	6
Bore x stroke.....	114 mm x 144.5 mm 4.49" x 5.69"
Piston displacement.....	8.85 ltr 540 in³
Governor.....	All-speed and mid-range, electronic
Horsepower	
SAE J1995.....	Gross 164 kW 220 HP
ISO 9249 / SAE J1349.....	Net 162 kW 217 HP
Rated rpm.....	1950 rpm
Fan drive type.....	Variable speed hydraulic
Lubrication system	
Method.....	Gear pump, force lubrication
Filter.....	Full-flow

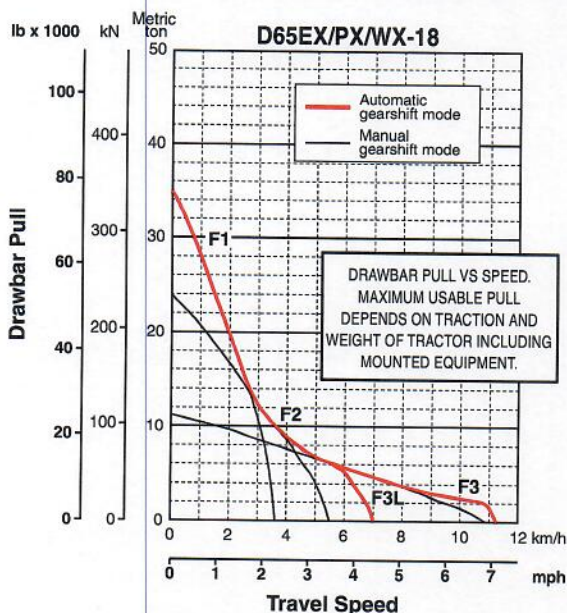
**EPA Tier 4 Final emissions certified



TORQFLOW TRANSMISSION

Komatsu TORQFLOW transmission consists of a water-cooled, 3-element, 1-stage, 2-phase, torque converter with lockup clutch, and a planetary gear, multiple-disc clutch transmission, which is electronically controlled, hydraulically actuated and force-lubricated for optimum heat dissipation. Shift lock lever and neutral safety switch.

Travel speed	Forward	Reverse
1st	3.7 km/h 2.3 mph	4.5 km/h 2.8 mph
2nd	5.6 km/h 3.5 mph	6.7 km/h 4.2 mph
3rd L	7.3 km/h 4.5 mph	8.7 km/h 5.4 mph
3rd	11.3 km/h 7.0 mph	13.6 km/h 8.5 mph



STEERING SYSTEM

Palm Command Control System (PCCS) lever controls for all directional movements. Pushing the PCCS lever forward results in forward machine travel, while pulling it rearward reverses the machine. Simply tilt the PCCS lever to the left for a left turns, tilt it right for right turns.

Hydrostatic Steering System (HSS) power has been increased 25% by a larger HSS motor, greater hydraulic pump flow, and more engine power while steering. The result is more powerful turns and quicker counter-rotation. Wet, multiple-disc, pedal-controlled service brakes are spring-actuated and hydraulically released.

Gear shift lock lever also applies parking brake.

Minimum turning radius

D65EX-18.....	1.9 m 6'3"
D65EX-18 with PAT.....	2.0 m 6'7"
D65PX-18.....	2.2 m 7'3"
D65WX-18.....	2.1 m 6'11"



UNDERCARRIAGE

Suspension..... Oscillating equalizer bar and pivot shaft
Track roller frame..... Monocoque, large section, durable construction

Rollers and idlers..... Lubricated

Track shoes

Parallel Link Undercarriage System (PLUS) with lubricated rotating bushings for extended system wear life and lower maintenance costs. Track tension is easily adjusted with a grease gun.

Tractor for outside mounted blade (Straight Tilt, SIGMADOZER®)*

	D65EX-18	D65WX-18	D65PX-18
Number of track rollers (each side)	7	7	8
Type of shoes (standard)	MS PLUS	MS PLUS	MS PLUS
Number of shoes (each side)	42	42	45
Grouser height	mm in 65 2.6"	65 2.6"	65 2.6"
Shoe width (standard)	mm in 610 24"	760 30"	915 36"
Ground contact area (ISO 16754)	cm ² 40910	50969	66946
	in ² 6,341	7,900	10,377
Ground pressure (tractor) (ISO 16754)	kPa 44.1	38.4	29.6
	kgf/cm ² 0.45	0.39	0.3
	psi 6.4	5.57	4.29
Track gauge	mm ft.in 1880 6'2"	2050 6'9"	2050 6'9"
Length of track on ground	mm ft.in 2970 9'9"	2970 9'9"	3275 10'9"

Tractor for inside mounted blade (PAT)*

	D65EX-18	D65WX-18	D65PX-18	D65PX-18 Wide
Number of track rollers (each side)	7	7	8	8
Type of shoes (standard)	MS PLUS	MS PLUS	MS PLUS	ES PLUS Clipped
Number of shoes (each side)	42	42	45	45
Grouser height	mm in 65 2.6"	65 2.6"	65 2.6"	65 2.6"
Shoe width (standard)	mm in 560 22"	760 30"	760 30"	915 36"
Ground contact area (ISO 16754)	cm ² 37556	50969	55605	66946
	in ² 5,821	7,900	8,619	10,377
Ground pressure (tractor) (ISO 16754)	kPa 54.7	42.1	38	32.7
	kgf/cm ² 0.56	0.43	0.39	0.33
	psi 7.93	6.11	5.51	4.74
Track gauge	mm ft.in 2050 6'9"	2230 7'4"	2230 7'4"	2385 7'10"
Length of track on ground	mm ft.in 2970 9'9"	2970 9'9"	3275 10'9"	3275 10'9"

*See page 14 for tractor/blade combinations.

MS: Moderate Service shoe, ES: Extreme Service shoe, Clipped: Clipped grouser

SPECIFICATIONS



FINAL DRIVES

Double-reduction planetary gear final drives increase drawbar pull and reduce stresses for longer life. Segmented sprocket teeth are bolt-on for easy replacement. Triple labyrinth housing protects the final drive seals.



HYDRAULIC SYSTEM

Closed-center load sensing system (CLSS) designed for precise and responsive control, and for efficient simultaneous operation.

Hydraulic control units:

All spool valves externally mounted beside the hydraulic tank. Piston type hydraulic pump with capacity (discharge flow) of 248 ltr/min **65.5 U.S. gal/min** at rated engine rpm.

Relief valve setting 27.9 MPa 285 kg/cm² **4,050 psi**

Control valves:

Spool control valves for SIGMADOZER® or straight tilt dozer

Positions: Blade lift Raise, hold, lower, and float
Blade tilt Right, hold, and left
Rear attachment.....Raise, hold, and lower



SERVICE REFILL CAPACITIES

Fuel tank	415 ltr	109.6 U.S. gal
DEF tank	23.5 ltr	6.2 U.S. gal
Coolant	49 ltr	12.9 U.S. gal
Engine	30.5 ltr	8.1 U.S. gal
Torque converter, transmission, bevel gear, and steering system	48 ltr	12.7 U.S. gal
Final drive (each side)		
D65EX-18 non PAT	16.5 ltr	4.4 U.S. gal
D65EX-18 with PAT	22 ltr	5.8 U.S. gal
D65PX-18	22 ltr	5.8 U.S. gal
D65WX-18	22 ltr	5.8 U.S. gal

Spool control valves for Power Angle Tilt dozer

Positions: Blade lift Raise, hold, lower, and float
Blade tilt Right, hold, and left
Blade angle Right, hold, and left
Rear attachment.....Raise, hold, and lower

Hydraulic cylinders.....Double-acting, piston

	Number of cylinders	Bore	
		SIGMADOZER® Straight Tilt Dozer	Power Angle Power Tilt Dozer
Blade lift	2	85 mm 3.3"	90 mm 3.5"
Blade tilt	1	125 mm 4.9"	130 mm 5.1"
Blade angle	2	N/A	110 mm 4.3"
Ripper lift	1	125 mm 4.9"	125 mm 4.9"
Pitch angle	1	39° - 53°	52° - 58°

Hydraulic oil capacity (refill): 62 ltr **16.4 U.S. gal**

Ripper equipment (additional volume):

Multi-shank ripper 7 ltr **1.8 U.S. gal**



DOZER EQUIPMENT

Blade capacities per SAE J1265. Moldboard constructed from high tensile abrasion resistant steel.

	Overall Length With Dozer mm ft.in	Blade Capacity m ³ yd ³	Blade Width x Height mm ft.in	Max. Lift Above Ground mm ft.in	Max. Drop Below Ground mm ft.in	Max. Tilt Adjustment mm ft.in	Weight Dozer Equipment kg lb	Ground Pressure* ISO 16754 kPa kg/cm ² psi
D65EX-18	5490	5.61	3410 x 1425	1135	500	870	2390	50.0/0.51/7.25
SIGMADOZER®	18'0"	7.34	11'2" x 4'8"	3'9"	1'8"	2'10"	5,260	
D65EX-18	5330	5.61	3470 x 1425	1105	430	870	2375	
Semi-U Dozer	17'6"	7.34	11'5" x 4'8"	3'8"	1'5"	2'10"	5,236	50.0/0.51/7.25
D65EX-18	5790	4.25	3870 x 1235	1170	695	500	2960	58.9/0.60/8.54
Power Angle	19'0"	5.56	12'8" x 4'1"	3'10"	2'3"	1'8"	6,530	
Tilt Dozer	19'0"	5.56	12'8" x 4'1"	3'10"	2'3"	1'8"	6,530	
D65PX-18	5680	3.69	3970 x 1100	1130	535	890	2100	32.8/0.33/4.76
Straight Tilt Dozer	18'8"	4.83	13'0" x 3'7"	3'8"	1'9"	2'11"	4,630	
D65PX-18	5790	4.42	4010 x 1235	1170	695	520	2990	
Power Angle	19'0"	5.78	13'2" x 4'1"	3'10"	2'3"	1'8"	6,590	40.8/0.42/5.91
Tilt Dozer	19'0"	5.78	13'2" x 4'1"	3'10"	2'3"	1'8"	6,590	35.1/0.36/5.10
D65PX-18	5790	4.42	4295 x 1188	1170	695	560	3200	
Wide Power Angle	19'0"	5.78	14'1" x 3'11"	3'10"	2'3"	1'10"	7,055	
Tilt Dozer	19'0"	5.78	14'1" x 3'11"	3'10"	2'3"	1'10"	7,055	43.3/0.44/6.28
D65WX-18	5500	5.90	3580 x 1425	1135	500	770	2500	
SIGMADOZER®	18'1"	7.72	11'9" x 4'8"	3'9"	1'8"	2'6"	5,510	
D65WX-18	5790	4.42	4010 x 1235	1170	695	520	2990	45.2/0.46/6.55
Power Angle	19'0"	5.78	13'2" x 4'1"	3'10"	2'3"	1'8"	6,590	
Tilt Dozer	19'0"	5.78	13'2" x 4'1"	3'10"	2'3"	1'8"	6,590	

* Ground pressure shows tractor, ROPS cab, full fluids, operator, standard equipment and applicable blade (EX, WX, PAT with counterweight).
Ground pressure per ISO 16754

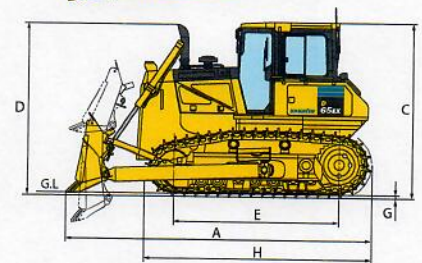
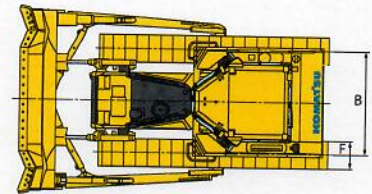


DIMENSIONS — OUTSIDE MOUNTED DOZER BLADE

	D65EX-18 SIGMADOZER®	D65WX-18 SIGMADOZER®	D65PX-18 Straight Tilt Dozer
A	5490 mm 18'0"	5500 mm 18'1"	5680 mm 18'8"
B	1880 mm 6'2"	2050 mm 6'9"	2050 mm 6'9"
C	3160 mm 10'5"	3160 mm 10'5"	3160 mm 10'5"
D	3085 mm 10'1"	3085 mm 10'1"	3085 mm 10'1"
E	2970 mm 9'9"	2970 mm 9'9"	3275 mm 10'9"
F	610 mm 24"	760 mm 30"	915 mm 36"
G	65 mm 2.6"	65 mm 2.6"	65 mm 2.6"
H	4065 mm 13'4"	4065 mm 13'4"	4370 mm 14'4"

*3350 mm **11'0"** is overall height if Komatsu sweeps are installed.

Ground clearance 415 mm **16"**



Shown with SIGMADOZER® (D65EX-18) single grouser shoe.

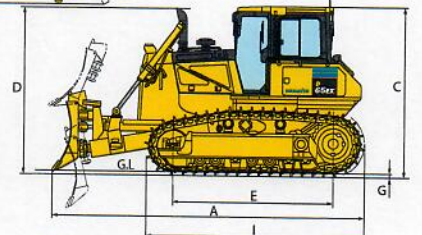
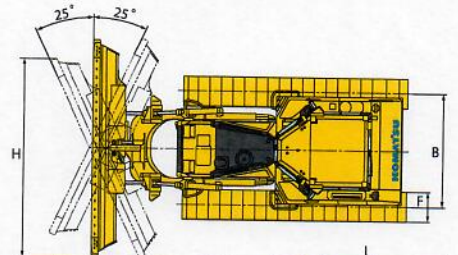


DIMENSIONS — PAT DOZER BLADE

	D65EX-18 PAT Dozer	D65WX-18 PAT Dozer	D65PX-18 PAT Dozer	D65PX-18 Wide PAT Dozer
A	5790 mm 19'0"	5790 mm 19'0"	5790 mm 19'0"	5790 mm 19'0"
B	2050 mm 6'9"	2230 mm 7'4"	2230 mm 7'4"	2385 mm 7'10"
C	3160 mm 10'5"	3160 mm 10'5"	3160 mm 10'5"	3160 mm 10'5"
D	3085 mm 10'1"	3085 mm 10'1"	3085 mm 10'1"	3085 mm 10'1"
E	2970 mm 9'9"	2970 mm 9'9"	3275 mm 10'9"	3275 mm 10'9"
F	560 mm 22"	760 mm 30"	760 mm 30"	915 mm 36"
G	65 mm 2.6"	65 mm 2.6"	65 mm 2.6"	65 mm 2.6"
H	3545 mm 11'8"	3627 mm 11'11"	3627 mm 11'11"	3925 mm 12'11"
I	4065 mm 13'4"	4065 mm 13'4"	4370 mm 14'4"	4370 mm 14'4"

*3350 mm **11'0"** is overall height if Komatsu sweeps are installed.

Ground clearance 415 mm **16"**



Shown with Power Angle Tilt dozer (D65EX-18) single grouser shoe.



OPERATING WEIGHT

Tractor shipping weights:

Shipping weight includes blade lift cylinders (C-frame for PAT, plus 840kg c'wt on EX/WX PAT), ROPS cab, standard track, lubricants, coolant.

EX Sigmadozer/SU.....	18780 kg	41,403 lb
EX PAT.....	21360 kg	47,091 lb
WX Sigmadozer.....	20360 kg	44,886 lb
WX PAT.....	22310 kg	49,185 lb
PX straight.....	20610 kg	45,437 lb
PX PAT.....	21950 kg	48,391 lb
PX Wide PAT.....	22730 kg	50,111 lb

Operating Weights:

Operating weight includes blade, hitch, (840 kg c'wt on EX/WX PAT), ROPS cab, standard track, lubricants, coolant, full fuel tank, and operator.

EX Sigmadozer/SU.....	21270 kg	46,892 lb
EX PAT.....	23000 kg	50,706 lb
WX Sigmadozer.....	22960 kg	50,618 lb
WX PAT.....	23950 kg	52,801 lb
PX straight.....	22830 kg	50,331 lb
PX PAT.....	23570 kg	51,963 lb
PX Wide PAT.....	24460 kg	53,925 lb



STANDARD EQUIPMENT FOR BASE MACHINE*

- Air cleaner, double element with dust indicator
- Alternator, 90 ampere/24V
- Auto idle shutdown function
- Backup alarm
- Batteries, 200 Ah/2 x 12V
- Battery disconnect switch
- Blade lift cylinders
- Color monitor, LCD
- Curved exhaust pipe
- Decelerator pedal
- Engine hood
- Engine intake centrifugal precleaner
- Engine, gull-wing side covers
- Engine shutdown secondary switch
- Fenders
- Front pull hook
- High mount foot rests
- Horn, warning
- Hydraulic driven radiator cooling fan with reverse clean mode
- Hydraulics for rear equipment
- KOMTRAX® Level 5
- Komatsu Diesel Particulate Filter (KDPF)
- Variable Geometry Turbocharger (VGT)
- Locks, filler caps and covers
- Oil pressure check ports for power train
- Operator ID function
- PM service connector
- Radiator mask, heavy-duty, hinged, perforated
- Rear cover
- ROPS cab**
- 75 dB operator ear noise level
- Air conditioner
- Cab accessories
 - 12V power supply (2 ports)
 - Cup holder
 - Rearview mirror
 - Rearview monitoring (1 camera)
 - AM/FM Radio w/remote AUX plug (3.5 mm)
- Shovel holder
- Work lights
 - 2 front, hood mounted
 - 2 front, cab mounted
 - 1 rear, left fender mounted
 - 2 rear, cab mounted
- Seat, air suspension, fabric, heated low back, rotates 12.5° to right, headrest
- Seat belt, 76 mm 3", retractable
- Seat belt indicator
- Sealed electrical connectors
- Secondary engine shutoff switch
- Starting motor, 11.0 kW/24V
- Steering system:
 - Hydrostatic Steering System (HSS)

- Torque converter with auto lock-up
- Track roller guards, center and end sections
- Track shoe assembly
 - Heavy-Duty lubricated rotary bushing (PLUS) track
- 560 mm 22" MS shoe (EX with PAT)
- 610 mm 24" MS shoe (EX with outside mount blade)
- 760 mm 30" MS shoe (WX with outside mount blade)
- 760 mm 30" MS shoe (PX, WX with PAT)
- 915 mm 36" MS shoe (PX with outside mount blade)
- 915 mm 36" ES shoe (PX Wide PAT)
- Transmission with auto/manual shift modes
- Underguards, heavy duty
 - Hinged belly pan
- Transmission
- Water separator
- Wide core cooling package

* Dozer assembly and rear mounted equipment are not included in base machine standard equipment

** Cab meets OSHA/MSHA ROPS and FOPS Level 2 standards



OPTIONAL EQUIPMENT

- Dozer assembly
- Drawbar, long type
- Hitch
- Rear counterweight 850 kg 1,870 lb
- Straight tilt frame for use with allied blades
- Topcon® Plug-N-Play bolt-on finishing kit
- Track roller guard, full length

Multi-shank ripper (for D65EX/WX)

Weight..... 1920 kg 4,230 lb
 Beam length..... 2170 mm 7'1"
 Maximum lift above ground..... 640 mm 2'1"
 Maximum digging depth..... 590 mm 1'11"



ALLIED MANUFACTURER'S ATTACHMENTS (SHIPPED LOOSE)

- Blade riser - Medford
 - Height 200mm 8" for PX/WX PAT (Field kit)
 - Blade capacity increases to 5.9 m³ 7.7yd³
- Guarding - Medford
 - Front sweeps (open top) 299 kg 660 lb
 - Front sweeps (w/ top cover plate) 481 kg 1060 lb
- Hinged cab side screens 79 kg 175 lb
- Hinged cab rear screen 91 kg 200 lb
- Tank guards 404 kg 890 lb
- Hydraulic winch - Allied H6H
 - 1325 kg 2,900 lb
- Mechanical angle blade - Rockland
 - 1100 kg 2,425 lb



AESS868-03

©2018 Komatsu America Corp.

Printed in USA

AD06(1.5M)OTP

06/18 (EV-1)

KOMATSU®

Note: All comparisons and claims of improved performance made herein are made with respect to the prior Komatsu model unless otherwise specifically stated.

www.komatsuamerica.com

Komatsu America Corp. is an authorized licensee of Komatsu Ltd. Materials and specifications are subject to change without notice. Komatsu Care®, KOMTRAX® and KOMTRAX Plus® are registered trademarks of Komatsu Ltd. All other trademarks and service marks used herein are the property of Komatsu Ltd., Komatsu America Corp. or their respective owners or licensees.