



QUOTATION

CT006, TRAILER, MWI YELLOW
CT6T01-MWI-DZ01
Deutz TD2.9 T4F w/COMPRESSOR

Pump – 6" Mobile Pump Package

Job: 19111
SN: 144435

08/13/2020
Page 1

PART NO	DESCRIPTION	QTY
DTZ-TD2.9-02	Deutz TD2.9 T4F w/Compressor	1
H13745	Control Panel	1
H13740-M	Control Panel Mount	1
H13728	Deutz Harness Adapter	1
H13741-K	Float Harness	1
DUKIT43	Float Rack	1
I00057N-H	HIGH Float Switch	1
I00057N-L	LOW Float Switch	1
R14600	12V Battery	1
G01884	6" Check Valve	1
CTKIT14	6" Check Valve Support	1
BB81805	6" Check Valve Support Swivel Mount	1
M16700	6" Gasket	3
F53000-T2-010	CT006 Pump with Primer & Gauges	1
DUKIT20	Pump Mount Channel	1
DUKIT235	Venturi Drain	1
CTKIT08	Venturi Drain Mount	1
G00018	Air Supply Safety Valve	1
G02655	Air Supply Check Valve	1
R02580	Compressor Air Filter	1
N08400	Pump / Engine SAE Spacer	1
I05532	Fuel Level Gauge	1
R13160	Fuel Fill Strainer	1
R13150	Fuel Fill Cap	1
DUKIT14	Fuel Pick-Up Tube	1
H35400	Shaft Coupling Taper-Lock Bushing	1
H04096A	Shaft Coupling Taper-Lock Flange	1
H04096B	Shaft Coupling Bolt Ring	1
H04096C	Shaft Coupling Flexible Element	1
A13965-02	Diesel Reservoir	1
A13876	Lift Loop	1
A12810	Bumper	1
A12710-SURGE	Towbar With Surge Actuator	1
H78792	Jack, Tongue	1
CTKIT15	Jack, Rear - Includes Jack, Mount, Fasteners	1
H78685-01	Pintle, 3" ID x 6" OD	1
H76475H	Axle	1
H66500	Wheel / Tire	2
I09300	Light Kit	1
DUKIT40	Fender Mount Kit	2
I09300-M	Tail Light Mount	2



QUOTATION

CT006, TRAILER, MWI YELLOW
CT6T01-MWI-DZ01
Deutz TD2.9 T4F w/COMPRESSOR

Pump – 6" Mobile Pump Package OPTIONS

Job: 19111
SN: 144435

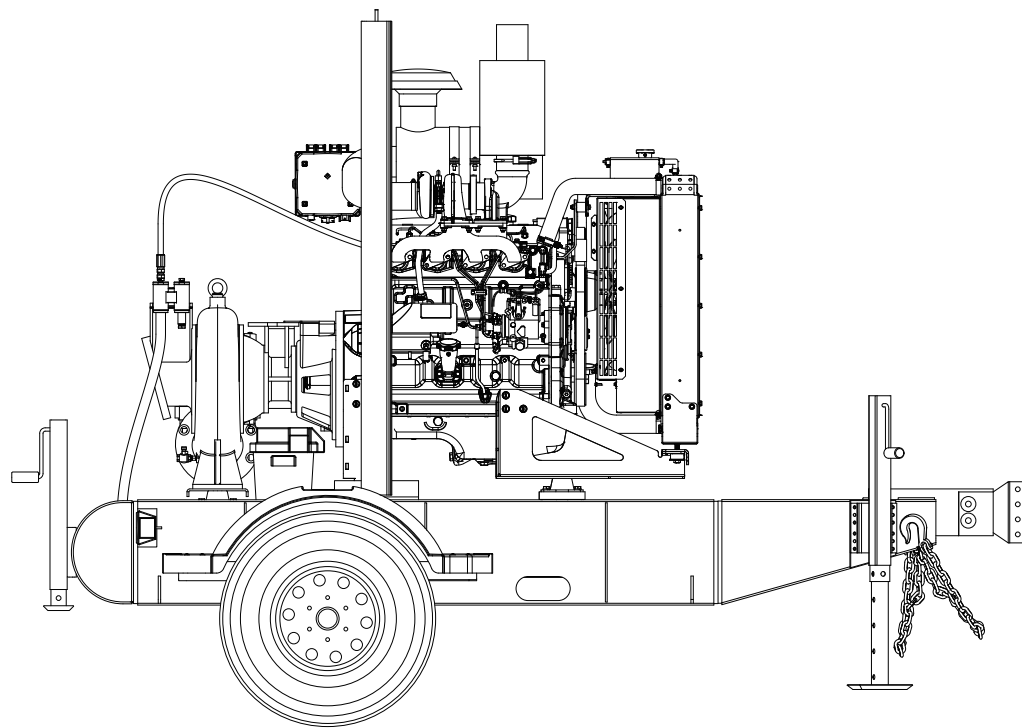
08/13/2020
Page 2

Group: PUMP: 6 Inch Mobile Pump Package – FLORIDA SHERIFFS ASSOCIATION

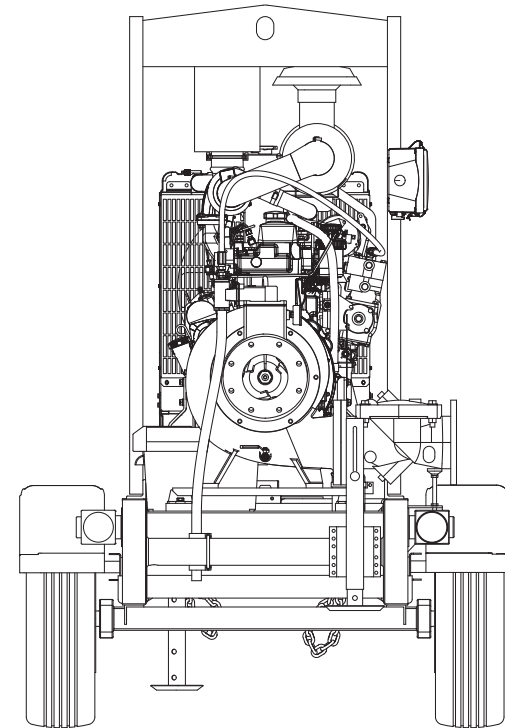
Item: CT006 – PART NO: CT6T01-MWI-DZ01, MWI Pumps

Description: DESIGN REQUIREMENTS: Discharge size: 6 inches; Suction size: 6 inches; Capable of 2300 GPM; Capable of 145 ft. Total Dynamic Head (TDH). Solids handling capability size, minimum size: 3 inches. ENGINE: Diesel engine, appropriate to pump size at continuous duty; Emission compliant engine; Industrial grade exhaust muffler and rain cap; 12vdc system with battery rack and cables; 78 gallon minimum fuel tank. PUMP: Check valve; Self-priming system. CONTROLS: Controls shall provide all operating, monitoring and control functions for the pump set; Controller will also provide 2 fully programmable contacts for input and output signals accordingly; Controller will provide remote start stop control with adjustable ramp speed. TRAILER: The manufacturer shall mount the diesel engine and pump unit with the above 78 gallon subbase tank on a street legal D.O.T. approved trailer; This trailer will be able to be rated for a safe travel at speeds and not be limited to the following specifications: Trailer design shall be such that the County/City may easily remove the entire engine, fuel tank and pump from the trailer; Lunette or military type towing ring with safety chains; Single point lifting bar; License plate bracket; support jacks front and rear; single torsion axle to meet load of trailer; surge hydraulic drum brakes. The trailer must have a VIN and a certificate of origin. STARTUP AND COMMISSIONING: Vendor must coordinate all startup and testing activities with the engineer/owner; After field delivery of the pump and trailer, an authorized factory representative shall perform the initial startup and field testing of the pump and trailer; If conditions permit, a site will be determined where connection will be made by the County/City to test the pump package; If a site cannot be prepared a standard operational test will be performed; At the same time the startup test is performed, the factory representative will provide all necessary operation, field maintenance and minor repair training as necessary; This will also include safety procedures and hazard assessment.

DIMENSIONS FOR PRIMERITE™ CT006 - 6 X 6" AUTOMATIC DRY SELF-PRIMING TRASH PUMP



132"



93"

65"

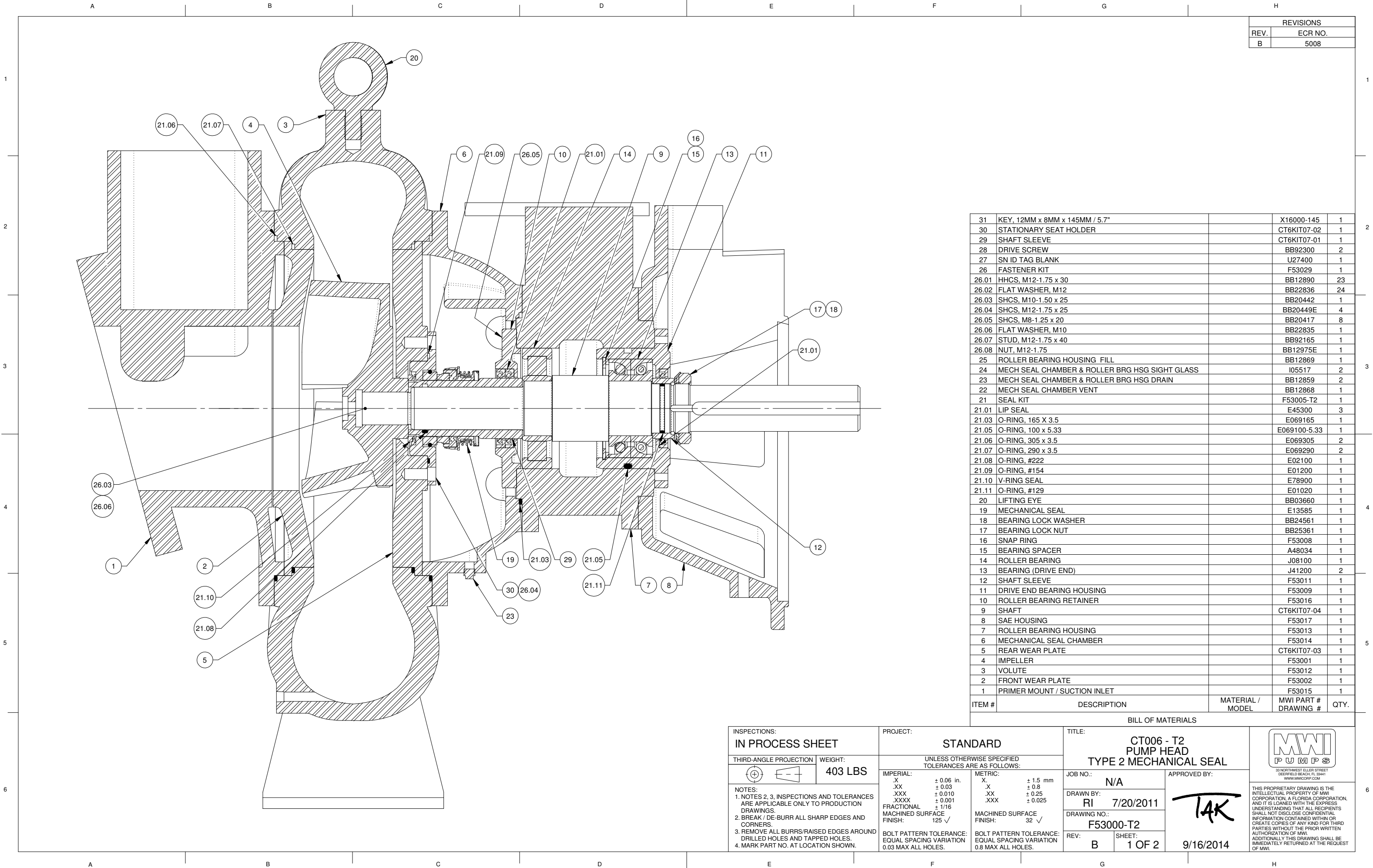
MWI PUMPS



2020 Side and Front View
MWI Pumps - CT006

Date: 7/23/20

Drawing No: CT006 - 1



REVISIONS	
REV.	ECR NO.
B	5008

31	KEY, 12MM x 8MM x 145MM / 5.7"		X16000-145	1
30	STATIONARY SEAT HOLDER		CT6KIT07-02	1
29	SHAFT SLEEVE		CT6KIT07-01	1
28	DRIVE SCREW		BB92300	2
27	SN ID TAG BLANK		U27400	1
26	FASTENER KIT		F53029	1
26.01	HHCS, M12-1.75 x 30		BB12890	23
26.02	FLAT WASHER, M12		BB22836	24
26.03	SHCS, M10-1.50 x 25		BB20442	1
26.04	SHCS, M12-1.75 x 25		BB20449E	4
26.05	SHCS, M8-1.25 x 20		BB20417	8
26.06	FLAT WASHER, M10		BB22835	1
26.07	STUD, M12-1.75 x 40		BB92165	1
26.08	NUT, M12-1.75		BB12975E	1
25	ROLLER BEARING HOUSING FILL		BB12869	1
24	MECH SEAL CHAMBER & ROLLER BRG HSG SIGHT GLASS		I05517	2
23	MECH SEAL CHAMBER & ROLLER BRG HSG DRAIN		BB12859	2
22	MECH SEAL CHAMBER VENT		BB12868	1
21	SEAL KIT		F53005-T2	1
21.01	LIP SEAL		E45300	3
21.03	O-RING, 165 X 3.5		E069165	1
21.05	O-RING, 100 x 5.33		E069100-5.33	1
21.06	O-RING, 305 x 3.5		E069305	2
21.07	O-RING, 290 x 3.5		E069290	2
21.08	O-RING, #222		E02100	1
21.09	O-RING, #154		E01200	1
21.10	V-RING SEAL		E78900	1
21.11	O-RING, #129		E01020	1
20	LIFTING EYE		BB03660	1
19	MECHANICAL SEAL		E13585	1
18	BEARING LOCK WASHER		BB24561	1
17	BEARING LOCK NUT		BB25361	1
16	SNAP RING		F53008	1
15	BEARING SPACER		A48034	1
14	ROLLER BEARING		J08100	1
13	BEARING (DRIVE END)		J41200	2
12	SHAFT SLEEVE		F53011	1
11	DRIVE END BEARING HOUSING		F53009	1
10	ROLLER BEARING RETAINER		F53016	1
9	SHAFT		CT6KIT07-04	1
8	SAE HOUSING		F53017	1
7	ROLLER BEARING HOUSING		F53013	1
6	MECHANICAL SEAL CHAMBER		F53014	1
5	REAR WEAR PLATE		CT6KIT07-03	1
4	IMPELLER		F53001	1
3	VOLUTE		F53012	1
2	FRONT WEAR PLATE		F53002	1
1	PRIMER MOUNT / SUCTION INLET		F53015	1
ITEM #	DESCRIPTION	MATERIAL / MODEL	MWI PART # DRAWING #	QTY.

INSPECTIONS:
IN PROCESS SHEET

THIRD-ANGLE PROJECTION

WEIGHT:
403 LBS

NOTES:
1. NOTES 2, 3, INSPECTIONS AND TOLERANCES ARE APPLICABLE ONLY TO PRODUCTION DRAWINGS.
2. BREAK / DE-BURR ALL SHARP EDGES AND CORNERS.
3. REMOVE ALL BURRS/RAISED EDGES AROUND DRILLED HOLES AND TAPPED HOLES.
4. MARK PART NO. AT LOCATION SHOWN.

BOLT PATTERN TOLERANCE:
EQUAL SPACING VARIATION
0.03 MAX ALL HOLES.

PROJECT:
STANDARD

UNLESS OTHERWISE SPECIFIED
TOLERANCES ARE AS FOLLOWS:

IMPERIAL:
.X ± 0.06 in.
.XX ± 0.03
.XXX ± 0.010
.XXXX ± 0.001
FRACTIONAL ± 1/16
MACHINED SURFACE
FINISH: 125 ✓

METRIC:
.X ± 1.5 mm
.X ± 0.8
.XX ± 0.25
.XXX ± 0.025
MACHINED SURFACE
FINISH: 32 ✓

BOLT PATTERN TOLERANCE:
EQUAL SPACING VARIATION
0.8 MAX ALL HOLES.

TITLE:
**CT006 - T2
PUMP HEAD
TYPE 2 MECHANICAL SEAL**

JOB NO.:
N/A

DRAWN BY:
RI 7/20/2011

DRAWING NO.:
F53000-T2

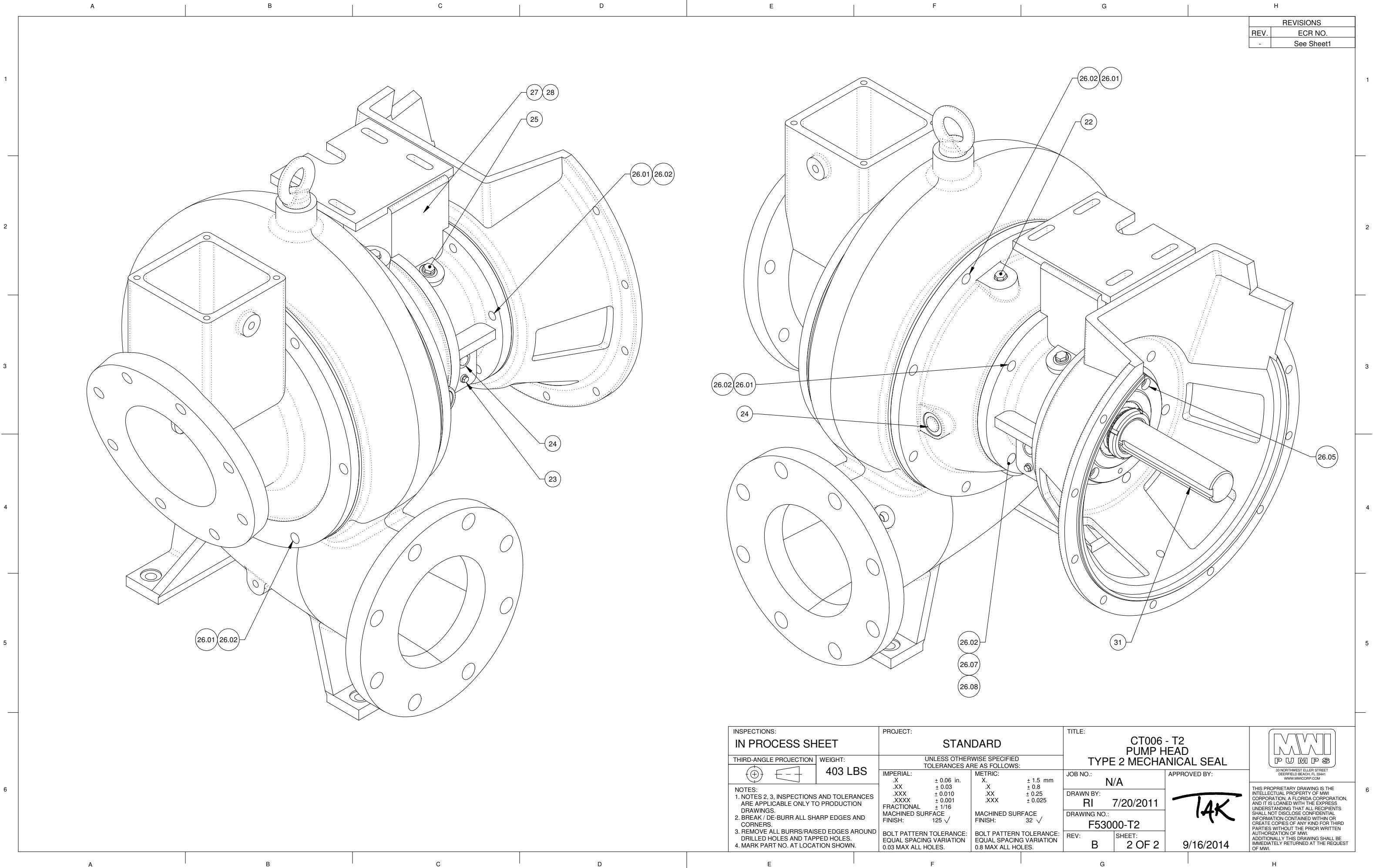
REV:
B

SHEET:
1 OF 2

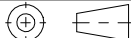


APPROVED BY:
TAK
9/16/2014

MWI
PUMPS
33 NORTHWEST ELLER STREET
DEERFIELD BEACH, FL 33441
WWW.MWICORP.COM

THIS PROPRIETARY DRAWING IS THE INTELLECTUAL PROPERTY OF MWI CORPORATION, A FLORIDA CORPORATION, AND IT IS LOANED WITH THE EXPRESS UNDERSTANDING THAT ALL RECIPIENTS SHALL NOT DISCLOSE CONFIDENTIAL INFORMATION CONTAINED WITHIN OR CREATE COPIES OF ANY KIND FOR THIRD PARTIES WITHOUT THE PRIOR WRITTEN AUTHORIZATION OF MWI. ADDITIONALLY THIS DRAWING SHALL BE IMMEDIATELY RETURNED AT THE REQUEST OF MWI.



REVISIONS	
REV.	ECR NO.
-	See Sheet1

INSPECTIONS: IN PROCESS SHEET		PROJECT: STANDARD		TITLE: CT006 - T2 PUMP HEAD TYPE 2 MECHANICAL SEAL	
THIRD-ANGLE PROJECTION 	WEIGHT: 403 LBS	UNLESS OTHERWISE SPECIFIED TOLERANCES ARE AS FOLLOWS:		JOB NO.: N/A	APPROVED BY: 
NOTES: 1. NOTES 2, 3, INSPECTIONS AND TOLERANCES ARE APPLICABLE ONLY TO PRODUCTION DRAWINGS. 2. BREAK / DE-BURR ALL SHARP EDGES AND CORNERS. 3. REMOVE ALL BURRS/RAISED EDGES AROUND DRILLED HOLES AND TAPPED HOLES. 4. MARK PART NO. AT LOCATION SHOWN.		IMPERIAL: .X ± 0.06 in. .XX ± 0.03 .XXX ± 0.010 .XXXX ± 0.001 FRACTIONAL: ± 1/16 MACHINED SURFACE FINISH: 125 ✓	METRIC: .X ± 1.5 mm .XX ± 0.8 .XXX ± 0.25 .XXX ± 0.025 MACHINED SURFACE FINISH: 32 ✓	DRAWN BY: RI 7/20/2011	<div><p>83 NORTHWEST ELLER STREET DEERFIELD BEACH, FL 33441 WWW.MWICORP.COM</p><p>THIS PROPRIETARY DRAWING IS THE INTELLECTUAL PROPERTY OF MWI CORPORATION, A FLORIDA CORPORATION, AND IT IS LOANED WITH THE EXPRESS UNDERSTANDING THAT ALL RECIPIENTS SHALL NOT DISCLOSE CONFIDENTIAL INFORMATION CONTAINED WITHIN OR CREATE COPIES OF ANY KIND FOR THIRD PARTIES WITHOUT THE PRIOR WRITTEN AUTHORIZATION OF MWI. ADDITIONALLY THIS DRAWING SHALL BE IMMEDIATELY RETURNED AT THE REQUEST OF MWI.</p></div>
		BOLT PATTERN TOLERANCE: EQUAL SPACING VARIATION 0.03 MAX ALL HOLES.		DRAWING NO.: F53000-T2	
		BOLT PATTERN TOLERANCE: EQUAL SPACING VARIATION 0.8 MAX ALL HOLES.		REV: B SHEET: 2 OF 2	
				9/16/2014	