



Retail Offer

CUSTOMER INFORMATION:
FLORIDA SHERIFFS ASSOC. PURCHASING CONTRACT
2617 Mahan Drive Tallahassee, FLORIDA 32308 USA

DEALERSHIP
GLADE & GROVE SUPPLY OF BELLE GLADE
1006 S MAIN ST BELLE GLADE, FL 33430 US 561-996-3095 SALESPERSON: Ken Holowecky

Retail Offer Number:	0001086189-1
----------------------	--------------

Retail Offer Valid to:	09/30/2021
------------------------	------------

Description:	CASE IH MAXXUM 115 MoTrim
--------------	---------------------------

UNITS OFFERED									
Unit # 1 MAXXUM 115 ACTIVE DRIVE4									
Vehicle / Quote Number:	0701392692								
Sales Order Number:									
VIN/Serial #:									
	<table border="1"><tr><td>List Price</td><td>114,561.00</td></tr><tr><td>Offered Price</td><td>126,762.00</td></tr><tr><td>Physical Damage Ins. (Deductible \$/ months)</td><td></td></tr><tr><td>Included: MoTrim LMT-25A-5HB 25' Mid Mount Boom Arm Mower</td><td>0.00</td></tr></table>	List Price	114,561.00	Offered Price	126,762.00	Physical Damage Ins. (Deductible \$/ months)		Included: MoTrim LMT-25A-5HB 25' Mid Mount Boom Arm Mower	0.00
List Price	114,561.00								
Offered Price	126,762.00								
Physical Damage Ins. (Deductible \$/ months)									
Included: MoTrim LMT-25A-5HB 25' Mid Mount Boom Arm Mower	0.00								

Total	\$126,762.00
--------------	---------------------

Down Payment	\$0.00
---------------------	---------------

Total Offer Value	\$126,762.00
--------------------------	---------------------

FINANCING INFORMATION					
Financed By	N/A	Amount Financed	126,762.00	Term in Months	
Loan Type		Rate Type		Interest Rate	
Item #404: Build Sheet					

Retail Offer

Vehicle / Quote Number: 0701392692					
NORMAL	NORMAL OFFER		743726	NAR CONFIGURATION	
CIH	CASE IH		392214	STANDARD MGWW	
BC	BC		744985	BASE COLOR, LOW-ROOF	
115HP	95 PTO HP (115 ENGINE HP)		390911	EDC BASE HYDRAULIC LIFT CYL.	
MRCOMP	MRCOMP		390560	LESS MID-MOUNT VALVES	
4 CYL	4 CYL		394782	LESS JOYSTICK	
	Base price	115,638.00	390648	LESS ISOBUS SOCKET	
390956	L/LP L/SMV EM W/7PIN		392484	LESS AUTOGUIDANCE	
390996	STANDARD TOOLBOX		391249	LESS TELEMATICS	
391152	STD STEERING WHEEL		743714	DELUXE RADIO WITH BLUETOOTH	522.00
759453	2 STD MIRRORS		392440	LESS MONITOR BRACKET	
390675	LESS REAR WIPER		390761	ANALOG/DIGITAL BASIC CLUSTER	
392701	AIR CONDITIONING 392701		390703	LESS RADAR	
391610	CAB W/FIXED FRONT SCREEN		392499	STD DTY MECH ISOLAT	
758504	SELF-CANCEL + AUDIBLE TURN		390729	L/ PNEUMATIC TRAILER BRAKES	
390661	LESS HIGH MOUNTED HEADLAMP		390711	LESS TRAILER BRAKES	
758355	4 LED STD POWER LOW-ROOF	-1,599.00	391630	STANDARD STEERING	
759446	BASIC HOOD LIGHTS		8328401	460/85(18.4)R38 R1W-MIFITRCO	
390906	LESS REAR CAB STORAGE BOX		8241401	380/85(14.9)R28 A8	
390905	LESS LH FRONT BOX		330438	NO TIRE BRAND PREFERENCE	
758456	MECHANICAL STABILIZER		391341	LESS HEADLAND CONTROL SYSTEM	
758451	CAT II FLEX LINKS		758440	540/1000 - REVERSIBLE	
758521	SMV EMBLEM, LOW-POSITION		390811	LESS FRONT LINKAGE	
758531	NASO COLD CONFIG		390819	LESS LOADER READY	
392196	CLASS 3, L/BRAKES		391828	80L/MIN FIXED DISPLACEMENT PMP	
390166	STD. HEAVY DUTY BRAKE DISCS		390840	2 MECHANICAL REAR REMOTES	
392197	HD FLANGE WITH DOG DIFF		758540	LOW-PRESSURE RETURN	
392195	40KPH_16X16_L/AUTOSHIFT		390926	LESS TUBES FOR FHPL	
390444	TOW HOOK-ONLY		391283	BASIC AIR UP/DOWN HEAD REST	
758401	GRID_HEATER		390021	COMMAND ARM MECHANICAL REMOTE	
390465	LESS ENGINE SPEED MANAGEMENT		391153	STANDARD FENDERS	
759128	STD FUEL TANK+GUARD		392803	FENDER MOUNTED CONTROLS	
758557	150 AMP_ALTERNATOR		390160	LESS AUTO PTO	
392300	STD ENG COOLING FAN		390875	LESS FRONT FENDER	
392194	T4B ENGINE W/BOOST		758466	IND. SWINGING DRAWBAR L/CLEVIS	
				Total List Price	\$114,561.00

MAXXUM ACTIVE DRIVE 4 SERIES TRACTOR US PRICE LIST

(Ex Works Port Of Entry)

Standard Equipment

ENGINE:

115 - 145: 4 Cylinder Turbocharged
and Intercooled Engine with
electronic management with
Power Boost

BASE: 115: 95 PTO hp @ 2200 RPM/
273 cu. in. (4.5 L) Displacement

OPT: 125: 105 PTO hp @ 2200 RPM/
273 cu. in. (4.5 L) Displacement

135: 110 PTO hp @ 2200 RPM/
273 cu. in. (4.5 L) Displacement

OPT: 145: 120 PTO hp @ 2200 RPM/
273 cu. in. (4.5 L) Displacement

OPT: 150: 6 Cylinder Turbocharged
and Intercooled Engine with
electronic management with
Power Boost
150: 125 PTO hp @ 2200 RPM/
411 cu. in. (6.75 L) Displacement
Tier 4B Emissions Compliant
4 valves per cylinder
Bosch fuel injection pump (electronic)
Air Cleaner w/ Precleaner & Exhaust
Aspiration
Dual element air filter
Hand and foot throttle
Grid Heater Starting Aid
115-150: 55.4-gallon (210 L) Fuel
Tank w/guard
10.4 Gallon (39.5 L) Diesel Exhaust
Fuel (DEF) Tank
Viscous fan (9 Blades)
Engine auto shut down feature
Fuel Cooler

EXHAUST:

A-Post exhaust with integral muffler

OPERATOR PROTECTIVE STRUCTURE:

CAB:

ROPS protected, ISO-mounted flat
deck platform, narrow profile roof
design with heater and air conditioner
(with 4-speed pressurizer), tinted
windshield with sunshade, fixed

OPERATOR PROTECTIVE STRUCTURE:

(continued)

hi-visibility roof window with retractable
sun screen, front intermittent wipers
and washers, two doors with locks,
two external mirrors, hinged rear
window (fully opens), radio ready
(speakers, wiring, antenna), rear
window access panel for
control/monitor box or wiring harness
entrance, interior dome light, self-
cancelling turn signal, and two external
courtesy lights

Steering wheel: tilt and telescoping

Seat: Basic air suspension
seat with operator's presence sensor,
seat belt, and swivel

INSTRUMENTATION:

Analog/Digital instrumentation cluster
with LCD display
Warning lights for air cleaner service,
alternator, oil pressure, fuel
sediment/water sensor, headlight
high beam and parking brake
Gauges for fuel level, engine
temperature, tachometer
(mechanical) and hour meter

TRANSMISSION:

16F x 16R Semi-Powershift
- ACTIVE DRIVE 4 Transmission
Steering column mounted Left Hand
Power clutchless shuttle (F/R)
Fully synchronized
4 powershifts in 4 ranges
Clutchless range change
Multiplate wet clutch design

MFD -- 25 mph (40 kph)
Speed varies with tire selection

CLUTCH:

Multi-plate wet clutch design

MAXXUM ACTIVE DRIVE 4 SERIES TRACTOR
US PRICE LIST

(Ex Works Port Of Entry)
Standard Equipment

STEERING/BRAKES:

Hydrostatic Power Steering
Hydraulically actuated wet disc brakes
(self-equalizing and self-adjusting)
Independent Parking brake

HYDRAULICS:

Fixed displacement gear pump system:
Maximum flow at rated engine speed
22.7 gpm (86 l/m) flow
(implement pump)
12.4 gpm (47 l/m) flow
(steering and operating circuits)
35.1 gpm (133 l/m) total tractor
hydraulic flow
Two closed-center remote valves
with flow control, quick couplers,
and anti-leak down
Dual individual lever control
Rear remote oil collection system
Hydraulic tapping port (power beyond)

AXLES:

MFD Front Axle:
Class III MFD Axle
Limited slip front differential
without steering sensors
Dual steering cylinders
Adjustable tread width from
61.4 in. to 88.8 in. (May vary
up to 1 in. depending on tires)
55 degree Turning Angle
12 degree Axle Oscillation
Drive Shaft Shield
Standard front tires:
14.9R28 (R1W)

Rear Axle:

Flange type
Dog Clutch rear differential:
MFD - Electro-hydraulic engaged
(front and rear)
Standard rear tires:
18.4R38 (R1W)

HITCH:

Electronic draft control
(lower link sensing)
3-point hitch category II with flex link
ends and telescoping stabilizers
Fast Raise/Lower Control (in cab)
6200 lb/2812 kg lift capacity (OECD)
with dual 80mm external assist ram
Rear fender mounted remote
hitch switches
Ride control
Swinging drawbar

PTO:

Independent 540/1000 RPM
with single reversible shaft
Multi-plate wet clutch design
Electro-hydraulic engagement
with soft start/auto feathering
Flip-up PTO shaft guard
Fender mounted PTO control switch

ELECTRICAL:

(1) 12-volt 800 cca Battery
Geared starter motor (4.2kW)
7-pin outlet for trailer/implement
lighting
3-pin implement socket (40 amp)
15 amp screw type positive/negative
terminals
Single Pin (8 amp) Accessory Power
outlet
150 amp Alternator
Two roof mounted single pin outlets
for beacon Cigar lighter

LIGHTING:

Two hood mounted forward facing
Eight LED worklights
Two cab roof mounted forward facing
Two grab rail mounted forward facing
Two cab roof mounted rear facing
Two "C"-post mounted rear facing
Two taillights



**MAXXUM ACTIVE DRIVE 4 SERIES TRACTOR
US PRICE LIST**

**(Ex Works Port Of Entry)
Standard Equipment**

LIGHTING: (continued)
Time delayed turn indicators with
audible warning
Front and rear cab roof mounted
flashing safety lights

MISCELLANEOUS:
Pivoting engine hood
SMV emblem
Toolbox
Horn
NEBRASKA TEST REPORT STATUS:
Nebraska Temporary Sales Permit
to be applied for

BOOM MOWER

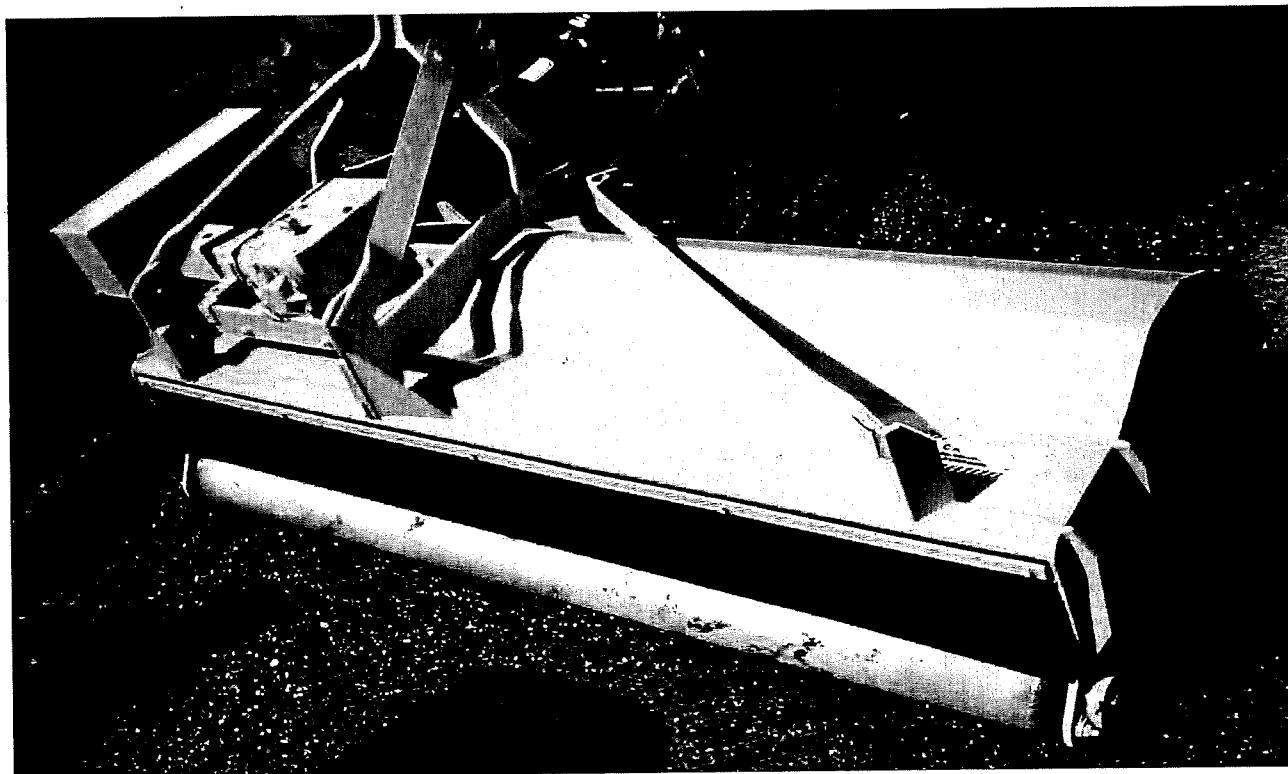


LMT-A-4BH

(Super Safety Head Shown)

BY **MōTrim[®]** INC.
THE LEADER IN BOOM MOWERS

MōTrim Has Been Manufacturing Boom Mowers For Over 48 Years.



Specifications For 3 Point Rear 88" Flail

- 88" Cut - Center or Offset
- 5" O.D. Cutter Shaft - 3/8" Thick Wall
- Supported each end on 1 15/16" I.D. Self Aligning Tapered Roller Bearings
- Drive 2 V-Belts
- Blades In Pairs - Replaceable Hangers
- Bearing Housing Extends Into Cavity Machined Into End of Cutter Shaft
- 3/16" Steel Pulley Guard
- 72 HP Gear Box (95 HP Intermittent)
- 10 Gauge Deck - 5/16" End Plate - Steel Runners
- Weight 1050 Pounds
- Lift Chains - Clutch Type PTO Drive
- 6" Rear Roller - Greaseable Bearings
- 1" to 6" Cutting Height
- Automatic Belt Tightener
- 10 Gauge Deck With 3" Steel Frame Members
- Optional Material Sizes

MODEL CR-88F OFFSET SHOWN

Complete Specifications on all items are available from Factory.

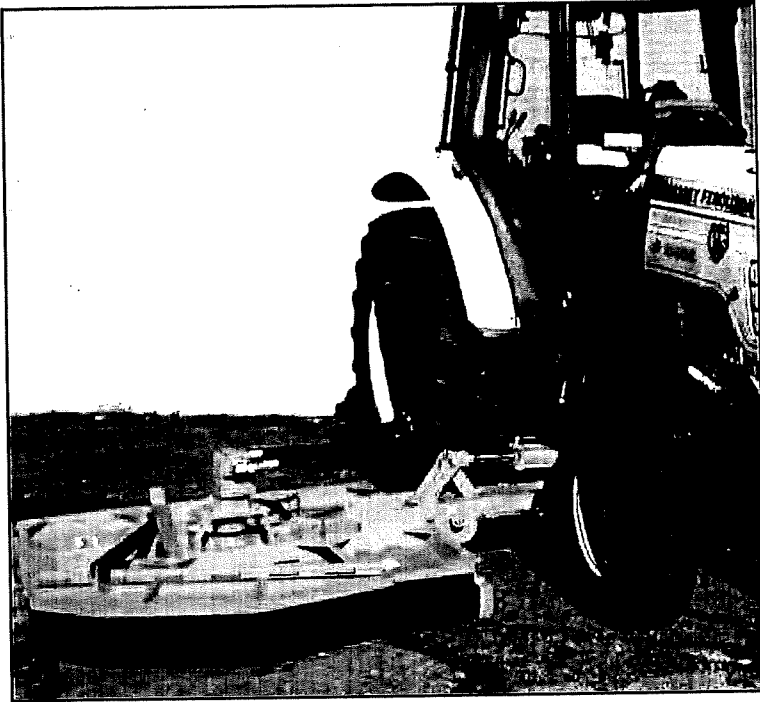
Model LMT-	Add Dash Number for Appropriate Cutting Head	Reach — Horizontal, from center of tractor
LMT-15-A-	-5R For 5' Rotary Octagonal Head	LMT-15 = 15'
LMT-16-A-	-5B For 5' Rotary Square Head	LMT-16 = 16'
LMT-17-A-	-4R For 4' Rotary Head	LMT-17 = 17'
LMT-18-A-	-4FB For 4' Flail Brush Head	LMT-18 = 18'
LMT-19-A-	-4F For 4' Flail Grass Head	LMT-19 = 19'
LMT-20-A-	-5FB For 5' Flail Brush Head	LMT-20 = 20'
LMT-21-A-	-5F For 5' Flail Grass Head	LMT-21 = 21'
LMT-22-A-	-6S For Sickle Bar Head	LMT-22 = 22'
LMT-23-A-	-5A For 5' Rotary With Swing Guard	LMT-23 = 23'
LMT-24-A-	-4BH For 4' Super Safety Head, 50" Cut	LMT-24 = 24'
LMT-25-A-	-5BH For 5' Super Safety Head	LMT-25 = 25'

Note: The tractor must meet the weight and balance requirements set forth by Motrim Inc.

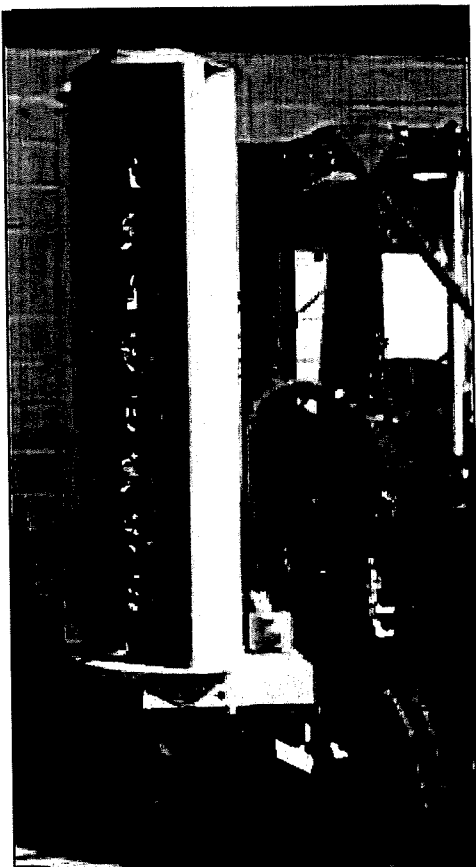
Motrim Inc. reserves the right to change the Specifications of its products without notice.
U.S. Patent #7185479 B1
RE 42109

SIDE ROTARY

MODEL LMS-5BH WITH SUPER SAFETY HEAD SHOWN



OPTIONAL INTERCHANGEABLE ROTARY OR FLAIL CUTTER WITH SHORT ARM
(For Use After Long Boom Has Been Removed From Tractor)



**SIDE FLAIL
CUTTER**

MODEL CSA-74F SHOWN

Specifications For Side Flail

- 74" Cut
- Cutter Shaft 5" O.D. with 3/8" Wall Thickness
- Main Shaft Ends - Supported with 1 15/16" I.D., Self Aligning Tapered Roller Bearings
- Bearing Housing Extends Into Cavity Machined Into End of Cutter Shaft
- Cast Steel Hydraulic Motor Sized to Match Hydraulic Pump
- Motor Drive - 2 V-Belts
- Short Arm To Replace Long Arm
- Blades Installed In Pairs with Replaceable Hangers
- 3/16" Thick Steel Guard For Motor Drive Pulleys
- 5/16" Steel Outboard End Plate
- 1/2" Steel Inboard Housing End Plate
- 6" Diameter Steel Roller Supported On Greaseable Bearings
- Automatic Belt Tightener
- Rubber Flap On Rear of Housing
- 1" to 6" Cutting Height

Specifications for Side Rotary Head

- 60" Cut
- 3 1/4" Diameter Spindle with 3 1/2" I.D. Tapered Roller Bearings
- Deck, 10 gauge with 3/8" Sidewalls
- Cast Steel Hydraulic Motor Sized to Match Hydraulic Pump
- Motor Drive with Flex Coupling
- Guard Door Installed at 20° Angle And Hydraulic Cylinder Operated
- Cut to 5" Trees
- Cut From Vertical to 60° Down
- Short Arm To Replace Long Boom
- Blades Flat with 4 Cutting Edges And Have A Mounting Hole In Each End and Weigh 30 Pounds
- Blades To Be Mounted In A Clevis Mounting Device To Withstand Up And Down Load Conditions
- Blades To Be Mounted with 1 1/2" Grade 5 Bolts and Nuts with Cotter Pins
- Optional Materials and Sizes Available

Specifications For Boom Mower

- Main Frame 4" x 4" x 1/4" Steel Tubing
- Two Piece Boom with Bronze Bushings
- Pivot Pins 1 1/2" Dia. - Greasable
- Inner Boom To Be 6" x 6" 3/8" Steel Tubing 50,000 PSI Yield
- Outer Arm to be 5" x 5" x 3/8" Steel Tubing 50,000 PSI Yield
- Hinge Points - Steel Re-enforced
- Safety Cage with Lexon Safety Glass Window
- Boom Rest
- 39 GPM and 9 GPM Hydraulic Pump - Steel with Steel Gear
- Hydraulic Motor Hose - 1 1/4" I.D.
- 5 Section Joystick Hydraulic Control
- Rotary Cutter - 50" Minimum
- Rotary Side Skirts 3/8" Thick Steel with Replaceable Runners

- 3 1/4" I.D. Tapered Roller Bearings on Top and Bottom of Cutter Spindle
- Blade 4" Minimum x 3/4" Thick with 4 Cutting Edges
- 1 1/2" Grade 5 Blade Mounting Bolts with Grade 5 Nut and Pin
- Hydraulic Motor To Be Sized To Match Hydraulic Pump and Equipped with Chain Coupling

Optional Equipment

- Varying Reach Machines
- Hydraulic Hose Size
- Hydraulic Components Including Pump, Motor and Reservoir Size
- Material Sizes

(Complete Specifications Available From Factory)



SUPER SAFETY HEAD

THE DOOR AND THE FRONT END OF THE CUTTER DECK ARE DESIGNED TO ALLOW THE MATERIAL DISCHARGED FROM THE CUTTER TO BE DIRECTED AWAY FROM THE TRACTOR AND AWAY FROM THE ROADWAY AS WELL.

COMPLETE SPECIFICATIONS ON EACH MACHINE, AVAILABLE UPON REQUEST.

MOWERS MADE IN USA AND OFFERED BY:

MōTrim[®] INC.

P.O. BOX 850 CAMBRIDGE, OHIO 43725

740-439-2725

FAX 740-432-2098

www.motrim.net