

## 450K CRAWLER DOZER

20-Aug-2020

Code	Description	Qty	List Price(USD)
23A0T	450K CRAWLER DOZER	1	\$112,200.00

### Option Codes

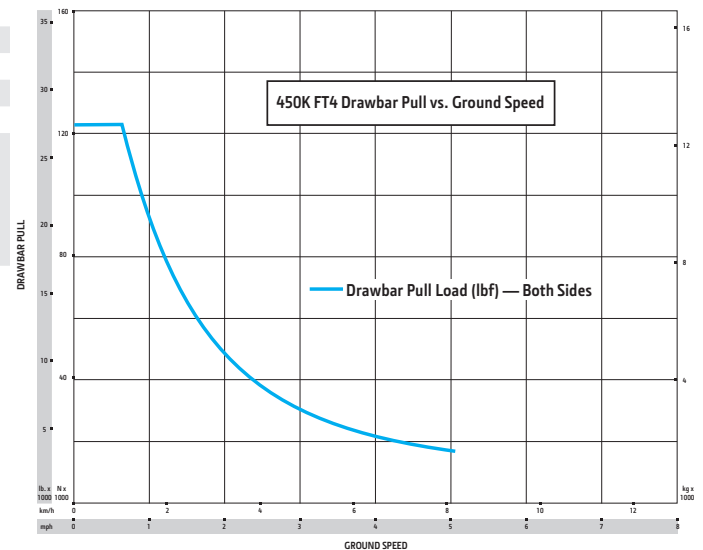
0940	John Deere PowerTech	1	\$1,092.00
1045	1450 mm (57 In.) Gauge, Long-Track (LT) Frame (6 roller)	1	No Added Cost
4550	40 Link with 16 in. (406 mm) Moderate Service Shoes	1	-\$5,885.00
4825	Chain Guides	1	No Added Cost
	97 in. x 37.6 in. (2.46 m X .96 m) Blade with Inside All		
7045	Hydraulic Standard C-Frame	1	\$3,422.00
7725	3 Function Hydraulic Control Valve	1	No Added Cost
7925	Hydraulic Pump	1	No Added Cost
8010	Hydraulic And Hydrostatic Oil - Hydrau	1	No Added Cost
5025	Canopy	1	No Added Cost
5855	Air Suspension Comfort Control High Back Vinyl Seat	1	No Added Cost
170C	JDLink Ultimate 5 Year Subscription	1	No Added Cost
2575	No Topcon Grade Control Base Kit Installed	1	No Added Cost
2775	No Topcon Radio Installation	1	In Base Price
2605	English Operator Manual	1	No Added Cost

**Total** **\$110,829.00**

Manufacturer's Suggested List Price shown. Retail prices may vary by dealer. Unless stated otherwise, taxes, freight, setup, delivery and other dealer specific charges not included in the pricing. Options/items noted with anything other than price will have additional costs. Pricing, availability, and specifications subject to change without notice. Special program pricing may be available on certain models. See dealer for details. Prices shown are in U.S. dollars and valid only in the U.S.

# 450K

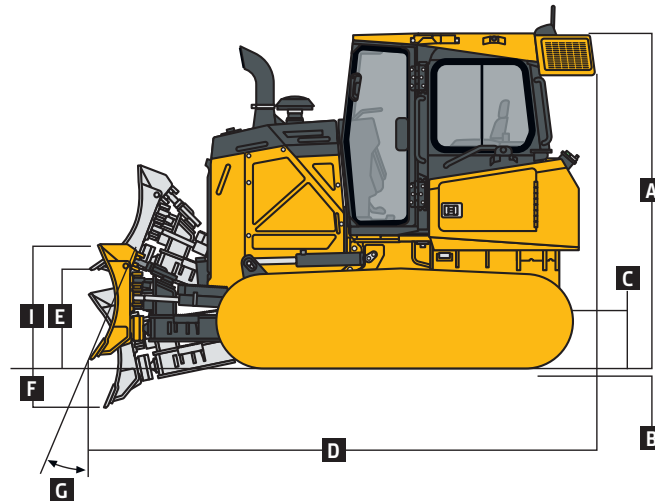
<b>Engine</b>	<b>450K / 450K LGP</b>
<b>Blade Types</b>	<b>Power-Angle-Tilt (PAT)</b>
Manufacturer and Model	John Deere PowerTech™ PWS 4045
Non-Road Emission Standard	EPA Final Tier 4/EU Stage IV
Displacement	4.5L (276 cu. in.)
SAE Net Rated Power	60 kW (80 hp) at 2,200 rpm
Net Peak Torque	354 Nm (261 ft.-lb.) at 1,400 rpm
Aspiration	Turbocharged with charge-air cooler
Air Cleaner	Dual-stage dry tube with tangential unloader
<b>Cooling</b>	
Type	Blower-type, direct-drive cooling fan
Engine Coolant Rating	-37 deg. C. (-34 deg. F)
Engine Radiator	8.47 fins per in.
<b>Powertrain</b>	
<b>Transmission</b>	Automatic, dual-path, hydrostatic (HST) drive; load-sensing feature automatically adjusts speed and power to match changing load conditions; each individually controlled track is powered by a variable-displacement piston pump and variable-displacement motor combination; ground-speed selection buttons on single-lever steering and direction control; independently selectable reverse speed ratios of 100%, 115%, or 130% of forward ground speed; decelerator pedal controls ground speed to stop
System Relief Pressure	34 887 kPa (5,060 psi)
<b>Travel Speeds</b>	
Forward and Reverse	8.0 km/h (5.0 mph)
Maximum (optional)	9.7 km/h (6.0 mph)
<b>Steering</b>	Single-lever steering, direction control, and counter-rotation; full power turns and infinitely variable track speeds provide unlimited maneuverability and optimum control; HST steering eliminates steering clutches and brakes
<b>Final Drives</b>	Triple-reduction final drives mounted independently of track frames and dozer push frames for isolation from shock loads
Total Ratio	48.4 to 1
<b>Drawbar Pull</b>	
Maximum	122 kN (27,500 lb.)
At 1.9 km/h (1.2 mph)	80 kN (17,900 lb.)
At 3.2 km/h (2.0 mph)	48 kN (10,900 lb.)
<b>Brakes</b>	
Service	HST (dynamic) braking stops the machine when the direction/steering control lever is moved to neutral or the decelerator is depressed to the detent
Parking	Exclusive spring-applied, hydraulically released park-brake feature engages wet, multiple-disc brakes automatically whenever the engine stops, the operator depresses the decelerator pedal to the brake position, the unit is in neutral for 3 seconds (with detected motion), or the park-lock lever is in the park position; machine cannot be driven with brake applied, minimizing wearout or need for adjustment
<b>Hydraulics</b>	
Type	Open-center hydraulic system with fixed-displacement gear pump
Pump Displacement	36.4 cc
System Relief Pressure	20 684 kPa (3,000 psi)
Maximum Flow at Unloaded High Idle Control	80 L/m (21 gpm)
	3-function direct-acting T-bar joystick with push-button angle function





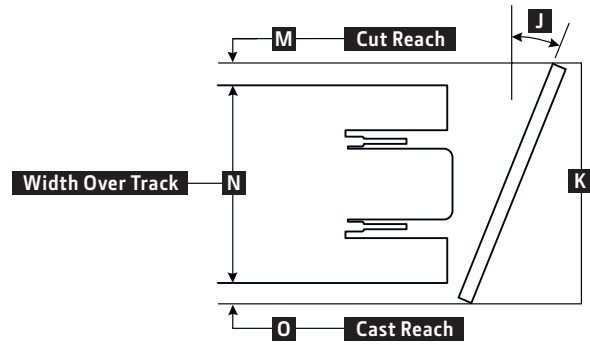
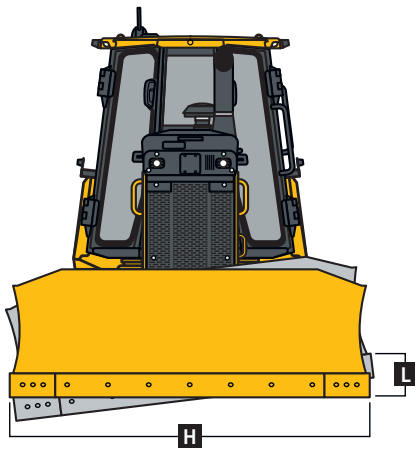
Electrical		450K / 450K LGP	
Blade Type		PAT	
Voltage		24 volts	
Capacity			
Battery		950 CCA	
Reserve		190 min.	
Alternator Rating			
Cab		100 amp	
Canopy		100 amp	
Lights		Grille mounted (2), rear mounted (2), and rear reflectors (2)	
Undercarriage		450K	450K LGP
Tracks		John Deere DuraTrax™ features large deep-heat-treated components; pins and bushings are sealed for life; rollers and idlers are permanently sealed and lubricated; full-length track-frame covers reduce material buildup and ease cleaning	
Track Gauge		1448 mm (57 in.)	1651 mm (65 in.)
Grouser Width		406 mm (16 in.)	610 mm (24 in.)
Chain		Sealed and lubricated	Sealed and lubricated
Shoes, Each Side		40 standard and Extended Life / 37 Maximum Life	40 standard and Extended Life / 37 Maximum Life
Track Rollers, Each Side		6	6
Track Length on Ground		2184 mm (86 in.)	2184 mm (86 in.)
Ground Contact Area		17 755 cm² (2,752 sq. in.)	26 632 cm² (4,128 sq. in.)
Ground Pressure		43.9 kPa (6.4 psi)	31.3 kPa (4.5 psi)
Track Pitch		160 mm (6.3 in.) standard / 171 mm (6.7 in.) Maximum Life	160 mm (6.3 in.) standard / 171 mm (6.7 in.) Maximum Life
Operator Station		450K / 450K LGP	
ROPS (ISO 3471 – 2008) and FOPS (ISO 3449 – 2005)			
Serviceability			
Refill Capacities			
Fuel Tank With Lockable Cap		202 L (53.45 gal.)	
Diesel Exhaust Fluid (DEF) Tank		11.8 L (3.1 gal.)	
Cooling System With Recovery Tank		21.1 L (5.6 gal.)	
Engine Oil With Filter		19 L (20 qt.)	
Hydraulic/HST Oil (common reservoir) With Filters		100 L (26.42 gal.)	
Final Drive (per tractor)		17 L (4.6 gal.)	
Operating Weights		450K	450K LGP
Base Weight (with standard equipment, rollover protective structure [ROPS], full fuel tank, and 79-kg [175 lb.] operator)		7959 kg (17,510 lb.)	8522 kg (18,752 lb.)
Optional Components			
Cab With Pressurizer and Heater/Air Conditioner		306 kg (675 lb.)	306 kg (675 lb.)
ROPS Canopy			
Heater		12 kg (26 lb.)	12 kg (26 lb.)
Front and Door Screens		81 kg (179 lb.)	81 kg (179 lb.)
Rear Screen		34 kg (76 lb.)	34 kg (76 lb.)
Side Screens		43 kg (94 lb.)	43 kg (94 lb.)
Limb Risers (ROPS canopy and cab)		95 kg (209 lb.)	95 kg (209 lb.)
Counterweight			
Front		109 kg (240 lb.)	109 kg (240 lb.)
Rear		150 kg (330 lb.)	150 kg (330 lb.)
Retrieval Hitch		23 kg (50 lb.)	23 kg (50 lb.)
Drawbar, Extended Rigid		33 kg (72 lb.)	33 kg (72 lb.)
Winch		652 kg (1,437 lb.)	652 kg (1,437 lb.)
Fairlead, 4 Roller		85 kg (187 lb.)	85 kg (187 lb.)
Full-Length Rock Guards		117 kg (257 lb.)	131 kg (288 lb.)
Maximum Life Undercarriage		88 kg (193 lb.)	132 kg (290 lb.)
Track Shoes			
406 mm (16 in.)		In base	—
610 mm (24 in.)		—	In base

Machine Dimensions		450K / 450K LGP
Blade Type		Power-Angle-Tilt (PAT)
A	Overall Height to Roof	2799 mm (9 ft. 2 in.)
B	Tread Depth With Single-Bar Grouser	49 mm (1.9 in.)
C	Ground Clearance in Dirt	329 mm (13 in.)
D	Overall Length	4016 mm (158 in.) (13 ft. 2 in.)
E	Blade Lift Height	772 mm (30.4 in.)
F	Blade Digging Depth	528 mm (20.8 in.)
G	Blade Cutting-Edge Angle, Adjustable	52 to 60 deg.



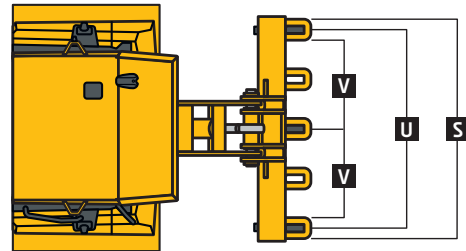
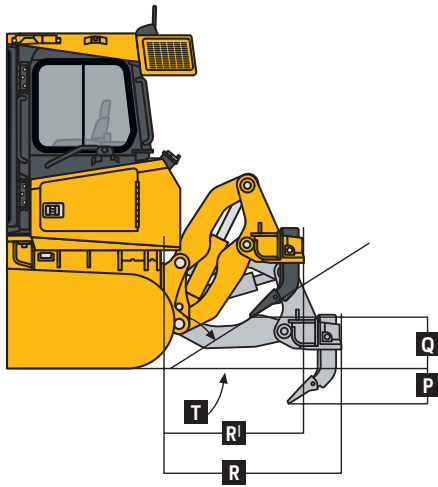
450K / 450K LGP WITH POWER-ANGLE-TILT (PAT) BLADE

Machine Dimensions (continued)		450K	450K LGP
<b>Straight</b>			
H	Blade Width	2464 mm (97 in.) (8 ft. 1 in.)	2921 mm (115 in.) (9 ft. 7 in.)
I	Blade Height	955 mm (3 ft. 2 in.)	955 mm (3 ft. 2 in.)
	SAE Capacity	1.6 m <sup>3</sup> (2.1 cu. yd.)	2.0 m <sup>3</sup> (2.6 cu. yd.)
	Weight	494 kg (1,090 lb.)	628 kg (1,385 lb.)
	C-Frame Assembly Weight (without blade)	330 kg (727 lb.)	330 kg (727 lb.)
J	Blade Angle	25.4 deg.	25.4 deg.
K	Overall Width With Blade Angled	2225 mm (7 ft. 4 in.)	2639 mm (8 ft. 8 in.)
L	Blade Tilt (uses tilt jack)	338 mm (13.3 in.)	399 mm (15.7 in.)
M	Cut Reach	56 mm (2.2 in.)	58.4 mm (2.2 in.)
N	Width Over Track	1854 mm (6 ft. 1 in.)	2261 mm (7 ft. 5 in.)
O	Cast Reach	318 mm (12.5 in.)	320 mm (12.6 in.)
<b>Straight (option)</b>			
H	Blade Width	2921 mm (115 in.) (9 ft. 7 in.)	3150 mm (124 in.) (10 ft. 4 in.)
I	Blade Height	955 mm (3 ft. 2 in.)	894 mm (35 in.)
	SAE Capacity	2.0 m <sup>3</sup> (2.6 cu. yd.)	1.9 m <sup>3</sup> (2.5 cu. yd.)
	Weight	628 kg (1,385 lb.)	631 kg (1,391 lb.)
	C-Frame Assembly Weight (without blade)	330 kg (727 lb.)	330 kg (727 lb.)
J	Blade Angle	25.4 deg.	25.4 deg.
K	Overall Width With Blade Angled	2639 mm (8 ft. 8 in.)	2845 mm (9 ft. 4 in.)
L	Blade Tilt (uses tilt jack)	399 mm (15.7 in.)	429 mm (16.9 in.)
M	Cut Reach	262 mm (10.3 in.)	163 mm (6.4 in.)
N	Width Over Track	1854 mm (6 ft. 1 in.)	2261 mm (7 ft. 5 in.)
O	Cast Reach	523 mm (20.6 in.)	424 mm (17.0 in.)

**Rear Ripper 450K / 450K LGP****Blade Type** PAT

Multi-shank parallelogram ripper with 5 pockets and 3 shanks

Weight 981 kg (2,163 lb.)

**P** Maximum Penetration 508 mm (20 in.)**Q** Maximum Clearance Under Tip 508 mm (20 in.)**R** Overall Length, Lowered Position 1450 mm (57 in.) (4 ft. 9 in.)**R<sup>1</sup>** Overall Length, Raised Position 1015 mm (40 in.) (3 ft. 4 in.)**S** Overall Beam Width 1830 mm (6 ft. 0 in.)**T** Slope Angle (full raise) 40 deg.**U** Ripping Width 1670 mm (5 ft. 6 in.)**V** Distance Between Shanks 806 mm (32 in.)

# Additional equipment

Key: ● Standard ▲ Optional or special

\*See your John Deere dealer for further information.

450K	550K	650K	Engine
●	●	●	Meets EPA Final Tier 4/EU Stage IV emissions
●	●	●	Electronic control with automatic engine protection
●	●	●	Dual safety element dry-type air cleaner, evacuator valve
●	●	●	Exhaust filter, under hood, with vertical stack
●	●	●	Engine glow-plug starting system
●	●	●	Programmable auto engine shutdown
●	●	●	Automatic turbo cool-down timer
●	●	●	Wet-sleeve cylinder liners
●	●	●	Remote-mounted fuel filters with automatic electronic priming
▲	▲	▲	Engine coolant heater, 110 volts
▲	▲	▲	Engine coolant heater, fuel fired
▲	▲	▲	Chrome exhaust
▲	▲	▲	Rotary ejector engine air pre-cleaner
▲	▲	▲	Fluid-sample valves
▲	▲	▲	Quick-service ports
▲	▲	▲	Severe-duty 400-mL (13.5 oz.) fuel filter and water separator with heating element
<b>Cooling</b>			
●	●		Blower-type, direct-drive cooling fan
		●	Variable-speed suction fan with optional reversing feature
		▲	Automatic, programmable reversing-fan-drive fan
●	●	●	Enclosed safety fan guard (conforms to SAE J1308 and ISO3457)
●	▲	▲	Perforated engine side shields
●	●	●	Heavy-duty perforated grille
●	●	●	Heavy-duty, trash-resistant radiator and high-ambient cooling package
▲	▲	▲	Extreme-duty perforated grille with light guard
<b>Powertrain</b>			
●	●	●	Remote diagnostic test ports
●	●	●	Automatic cold-weather transmission warmup system
●	●	●	Automatic transmission derating for exceeded system temperatures
▲	●	●	Environmental service drains
●	●	●	2,000-hour vertical spin-on transmission filter
<b>Hydraulic System</b>			
●	●	●	3-function hydraulics
●	●	●	2,000-hour vertical spin-on hydraulic filter

450K	550K	650K	Hydraulic System (continued)
▲	▲	▲	4-function hydraulics with rear plumbing
▲	▲	▲	Drive-through hydraulic pump for use with winch
▲	▲	▲	Grade-control-ready electro-hydraulics (EH)
<b>Mainframe, Access Panels</b>			
●	●	●	Front tow loop, bolt-on
●	●	●	Reinforced engine and mid-frame bottom guards
●	●	●	Integral transmission guard
●	●	●	Vandal protection: Engine access door / Side tank access doors / Fuel tank / Instrument panel / Transmission reservoir / Hydraulic reservoir
<b>Attachments</b>			
▲	▲	▲	Counterweight, front, 109 kg (240 lb.)
▲	▲	▲	Counterweight, rear, 150 kg (330 lb.)
▲	▲	▲	Retrieval hitch with pin
▲	▲	▲	Extended rigid drawbar with pin for pull-type implements
▲	▲	▲	Drawbar, extended for winch (with or without fairlead)
▲	▲	▲	Ripper, parallelogram with 5 shank pockets and 3 teeth
▲	▲	▲	Winch, John Deere, power in/free spool out OR power out
▲	▲	▲	4-roller fairlead for winch
▲	▲	▲	Root-rake blade attachment
▲	▲	▲	Rear-mounted toolbox
▲	▲	▲	Trimble-ready interface package
▲	▲	▲	Topcon-ready interface package
▲	▲	▲	Leica-ready interface package
<b>Undercarriage</b>			
●	●	●	Full-length, smooth-surface track frame covers
●	●	●	Chain guides, front and rear
●	●	●	Maximum Life Undercarriage System
▲	▲	▲	Extended life undercarriage (SC-2™ bushings)
▲	▲	▲	Heavy-duty sealed and lubricated undercarriage
▲	▲	▲	Full-length rock guards
<b>STD LGP 450K Shoes</b>			
●			406-mm (16 in.) moderate service
	●		610-mm (24 in.) moderate service
<b>STD LGP 550K Shoes</b>			
●	▲		457-mm (18 in.) moderate service
	●		610-mm (24 in.) moderate service

XLT	LGP	650K Shoes
●	▲	457-mm (18 in.) moderate service
▲	▲	510-mm (20 in.) moderate service with clipped corners
	▲	610-mm (24 in.) moderate service
	●	710-mm (28 in.) moderate service with clipped corners
<b>Canopy Cab Operator's Station / Electrical</b>		
●	●	Retractable seat belts, 76 mm (3 in.) (conform to SAE J386)
●	●	Accessories: Convex wide-angle interior rearview mirror / Thigh cushions (2) / Cup holders (2)
●	●	Power port (cab includes two power ports)
●	●	Lockable dash-mounted storage compartment
	●	Air conditioner, 24,000 Btu
	●	Tinted glass
	●	Dome light
	●	Heater (roof mount)
	●	Wipers (intermittent plus 2 speeds) and washers – front window, left and right doors
	▲	Rear wiper and washer
●		Air-ride vinyl seat
	●	Air-ride fabric seat
	▲	Deluxe heated and leather-bolstered air-ride seat
▲	●	Under-seat heater
	●	AM/FM/Weather Band (WB) radio, clock, and MP3 player front plug-in
	▲	USB port and Bluetooth® mic
	●	Radio-area storage slot
●	●	Sealed alternator, 100 amps
●	●	Lockable master electrical disconnect switch
●	●	Multifunction/multi-language LCD monitor: Analog display (fuel level, coolant temperature, and engine oil pressure) / Digital display (engine rpm, charge pressure, hours, DPF soot level, and transmission direction/speed range)
●	●	Built-in diagnostics: Diagnostic-code details / Sensor values / Calibrations / Individual circuit tester
●	●	Keyless start with multiple security modes
●	●	Battery, dual, 24 volts
●	●	Lights, grille mounted (2), rear mounted (2)
▲	▲	Work lights, roof mounted (2)
	▲	External-mounted attachment mirror
●	●	JDLINK™ wireless communication system (available in specific countries; see your dealer for details)



Net engine power is with standard equipment including air cleaner, exhaust system, alternator, and cooling fan at test conditions specified per ISO9249. Specifications and design subject to change without notice. Wherever applicable, specifications are in accordance with SAE standards. Except where otherwise noted, these specifications are based on units with standard equipment, rollover protective structures (ROPS), full fuel tanks, and 79-kg (175 lb.) operators.

JohnDeere.com