

310SL BACKHOE LOADER

20-Aug-2020

Code	Description	Qty	List Price(USD)
0A70T	310SL BACKHOE LOADER	1	\$118,992.00

Option Codes

170C	JDLink Ultimate 5 Year Subscription	1	No Added Cost
2401	English Decals with English Operator and Safety Manuals	1	No Added Cost
	Mechanical Front Wheel Drive (MFWD) with Limited Slip		
3065	Differential	1	No Added Cost
4464	Galaxy 19.5L - 24 in. 12 PR Rear & 12.5/80-18 10PR Front	1	No Added Cost
2015	Canopy (ROPS/FOPS)	1	No Added Cost
8635	Single Battery With Disconnect and Jump Post	1	\$257.00
6010	Standard Dipperstick	1	No Added Cost
6210	No Auxiliary	1	No Added Cost
5225	Mechanical Controls, Two Lever, ISO (DEERE)	1	No Added Cost
5400	Less Coupler	1	No Added Cost
	24" (610 mm) Wide, Heavy-Duty, 7.5 Cu. Ft. (0.21 Cu. M.)		
5656	Capacity Bucket	1	\$1,370.00
7025	Two-Function Loader Hydraulics, Single Lever	1	No Added Cost
	1.3 Cu. Yd. (1.0 Cu. M.) 92 in. (2.34 m) Wide Heavy Duty		
7645	Long Lip Bucket with Bolt on Cutting Edge and Skid Plates	1	\$3,424.00
8425	450 Lb. (204 kg) Front Counterweight	1	\$615.00
	John Deere PowerTech Plus 4.5L (276 Cu. In.) Engine Meets		
1065	Final Tier 4 and Stage IV Emissions	1	\$10,028.00

Total **\$134,686.00**

Manufacturer's Suggested List Price shown. Retail prices may vary by dealer. Unless stated otherwise, taxes, freight, setup, delivery and other dealer specific charges not included in the pricing. Options/items noted with anything other than price will have additional costs. Pricing, availability, and specifications subject to change without notice. Special program pricing may be available on certain models. See dealer for details. Prices shown are in U.S. dollars and valid only in the U.S.



310SL SPECIFICATIONS

Engine		310SL
Manufacturer and Model	John Deere PowerTech™ Plus 4045HT096 turbocharged	
Non-Road Emission Standard	EPA Final Tier 4/EU Stage IV	
Displacement	4.5 L (276 cu. in.)	
Gross Peak Power	75 kW (101 hp) at 2,240 rpm	
Net Peak Power (ISO 9249)	74 kW (99 hp) at 2,240 rpm	
Net Peak Torque (ISO 9249)	417 Nm (307 lb.-ft.) at 1,400 rpm	
Net Torque Rise	30%	
Lubrication	Pressure system with spin-on filter and cooler	
Air Cleaner	Dual-stage dry type with safety element and evacuator valve	
Cooling		
Fan Type	Electronically controlled, variable-rate, suction-type cooling fan	
Engine Coolant Rating	-40 deg. C (-40 deg. F)	
Engine Oil Cooler	Oil to water	
Powertrain		
Transmission	5-speed, helical-cut gears, full PowerShift™ transmission with hydraulic reverser standard; electric clutch cutoff on loader lever; AutoShift transmission optional	
Torque Converter	Single stage, dual phase with 2.63:1 stall ratio, 280 mm (11 in.)	
Maximum Travel Speeds with Standard Engine, Measured with 19.5L-24 Rear Tires	Forward	Reverse
Gear 1	5.4 km/h (3.4 mph)	6.8 km/h (4.2 mph)
Gear 2	9.9 km/h (6.2 mph)	12.5 km/h (7.8 mph)
Gear 3	20.4 km/h (12.7 mph)	20.2 km/h (12.6 mph)
Gear 4	37.2 km/h (23.1 mph)	—
Gear 5	40.0 km/h (24.9 mph)	—
Axles		
Axle Oscillation, Stop to Stop, Front Axle	22 deg.	
Axle Ratings	Front	Rear
SAE J43	5500 kg (12,100 lb.)	7000 kg (15,400 lb.)
Dynamic	9000 kg (19,800 lb.)	10 000 kg (22,000 lb.)
Static	24 500 kg (54,000 lb.)	26 500 kg (58,400 lb.)
Ultimate	39 500 kg (87,100 lb.)	41 500 kg (91,500 lb.)
Differentials		
Mechanical-Front-Wheel-Drive (MFWD) Axle	Automatic, limited-slip traction control	
Rear Axle	Foot actuated, hydraulically engaged 100% mechanical lock	
Steering (ISO 5010)	Hydrostatic power steering and emergency steering	
Axle	MFWD	Non-Powered Front
Curb-Turning Radius		
With Brakes	3.58 m (11 ft. 9 in.)	3.56 m (11 ft. 8 in.)
Without Brakes	4.20 m (13 ft. 9 in.)	4.17 m (13 ft. 8 in.)
Bucket-Clearance Circle		
With Brakes	10.23 m (33 ft. 7 in.)	10.22 m (33 ft. 6 in.)
Without Brakes	11.15 m (36 ft. 7 in.)	11.13 m (36 ft. 6 in.)
Steering Wheel Turns (lock to lock)	2.7	3.2
MFWD and Rear Axle	Heavy duty, outboard planetary final drives distribute shock loads over 3 gears	
Brakes (ISO 3450)		
Service	Power assisted, hydraulic wet disc, mounted inboard, self-adjusting and self-equalizing	
Parking	Spring applied, hydraulically released, wet, multi-disc, independent of service brakes with electric switch control	
Hydraulics		
Main Pump	Open-center system; tandem gear pump with unloader	
Pump Flow at 2,200 rpm		
Backhoe	136 L/m (36 gpm)	
Loader	106 L/m (28 gpm)	
System Relief Pressure		
Backhoe	24 993 kPa (3,625 psi)	
Loader	24 993 kPa (3,625 psi)	
Controls		
Backhoe	2-lever mechanical standard; pilot controls with pattern select and auxiliary functions optional; field kits available for additional mechanical control options	
Loader	Single-lever control with electric clutch cutoff switch and MFWD (momentary) standard; single-lever control with electric clutch cutoff switch, electrohydraulic (EH) proportional auxiliary roller, MFWD (momentary), and transmission quick-shift optional	

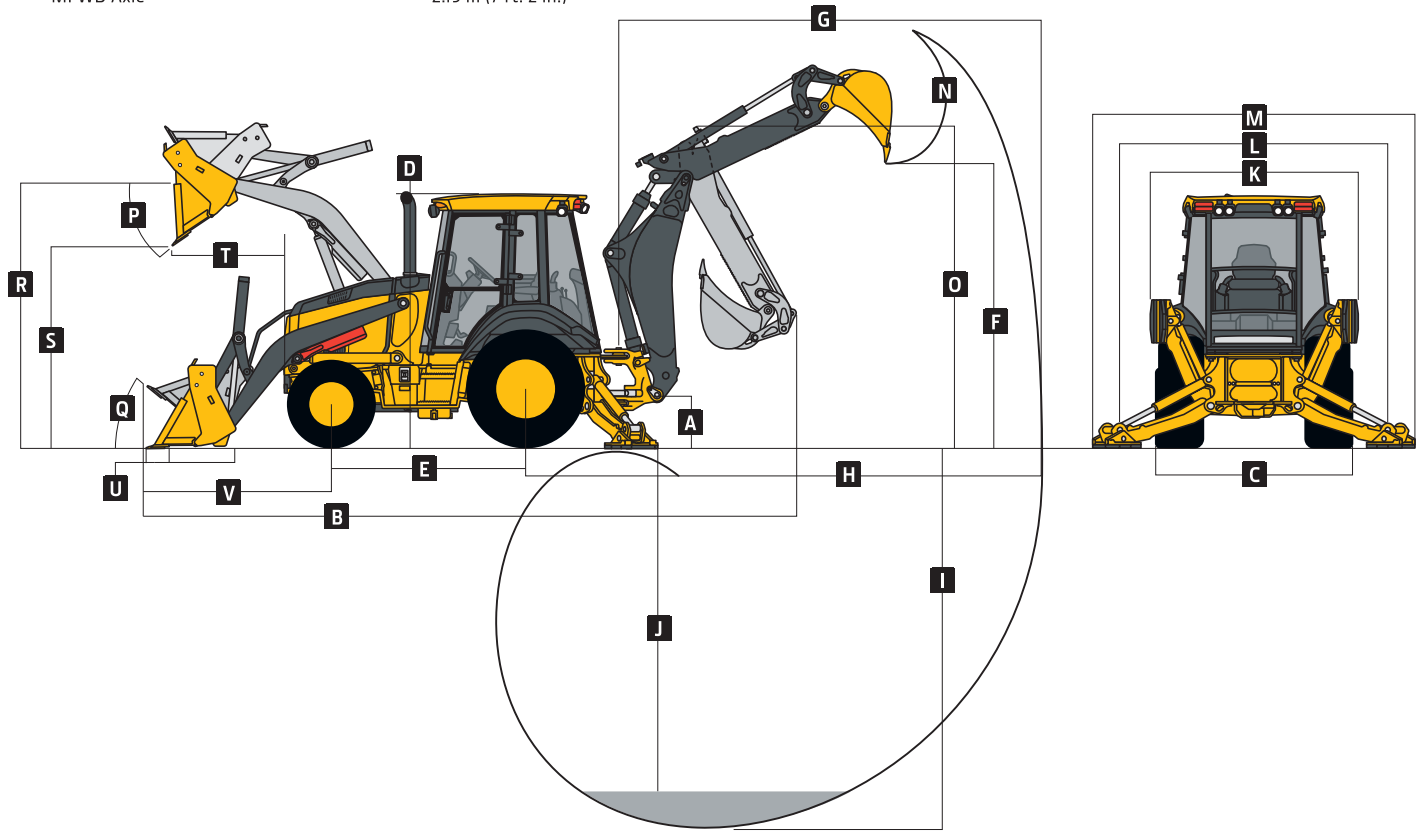
310SL

SPECIFICATIONS



Cylinders	310SL		
Heat-treated, chrome-plated, polished rods; hardened steel (replaceable bushings) pivot pins			
	Bore	Rod Diameter	Stroke
Loader Boom (2)	80 mm (3.15 in.)	50 mm (1.97 in.)	789 mm (31.08 in.)
Loader Bucket (1)	90 mm (3.54 in.)	50 mm (1.97 in.)	744 mm (29.29 in.)
Backhoe Boom (1)	120 mm (4.72 in.)	56 mm (2.20 in.)	794 mm (31.26 in.)
Backhoe Crowd (1)	115 mm (4.53 in.)	63 mm (2.48 in.)	602.5 mm (23.72 in.)
Backhoe Bucket (1)	90 mm (3.54 in.)	56 mm (2.20 in.)	810 mm (31.89 in.)
Heavy-Duty Option	100 mm (3.94 in.)	63 mm (2.48 in.)	810 mm (31.89 in.)
Backhoe Swing (2)	90 mm (3.54 in.)	50 mm (1.97 in.)	278 mm (10.94 in.)
Backhoe Extendable Dipperstick (1)	70 mm (2.76 in.)	40 mm (1.57 in.)	1062 mm (41.81 in.)
Backhoe Stabilizer (2)			
Standard	90 mm (3.54 in.)	50 mm (1.97 in.)	500 mm (19.69 in.)
Optional Extended Leg	100 mm (3.94 in.)	50 mm (1.97 in.)	500 mm (19.69 in.)
Non-Powered Axle (1)	70 mm (2.76 in.)	42 mm (1.65 in.)	210 mm (8.27 in.)
MFWD (1)	65 mm (2.56 in.)	40 mm (1.57 in.)	210 mm (8.27 in.)
Electrical			
Voltage	12 volt		
Alternator Rating	120 amp with canopy and quarter cab / 160 amp with cab		
Lights	10 halogen: 4 front, 4 rear, and 2 side docking (32,500 candlepower each); turn signals and flashers: 2 front and 2 rear; stop and taillights; and 2 rear reflectors; factory-installed option for 2 LED spotlights and 8 LED floodlights in lieu of standard halogen light package		
Operator Station			
Type (ISO 3471)	Canopy, isolation mounted, ROPS/FOPS, left/right access, with molded roof; optional quarter cab (front glass only) and fully enclosed cab		
Tires/Wheels			
	Front	Rear	
Non-Powered Front Axle	12.5/80-18 F3 (12)	19.5L-24 R4 (12)	
	14.5/75-16.1 F3 (16)	19.5L-24 R4 (12)	
With MFWD	12.5/80-18 I3 (12)	19.5L-24 R4 (10)	
	12.5/80-18 R4 (10)	19.5L-24 R4 (12)	
	12.5/80-18 I3 (12)	21L-24 R4 (12)	
	12.5/80-18 R4 (10)	21L-24 R4 (12)	
	340/80R18 XMCL	500/70R24 XMCL	
	340/80R18 550	500/70R24 550	
	340/80R18 580	500/70R24 580	
Serviceability			
Refill Capacities			
Cooling System			
Cab	30.0 L (31.7 qt.)		
Canopy	28.2 L (29.8 qt.)		
Rear Axle	18 L (19 qt.)		
Engine Oil (including vertical spin-on filter)	13 L (13.7 qt.)		
Torque Converter and Transmission	15.1 L (16 qt.)		
Fuel Tank (with ground-level fueling)	128.7 L (34 gal.)		
Diesel Exhaust Fluid (DEF) Tank	13.7 L (3.6 gal.)		
Hydraulic System	126.8 L (33.5 gal.)		
Hydraulic Reservoir	45 L (11.9 gal.)		
MFWD Housing			
Axle	6.5 L (6.9 qt.)		
Planetary (each)	0.9 L (1 qt.)		
Operating Weights			
With Full Fuel Tank, 79-kg (175 lb.) Operator, Standard Equipment, and Bumper	7199 kg (15,872 lb.)		
Typical with Cab, Extendable Dipperstick, and 340-kg (750 lb.) Counterweight	8025 kg (17,692 lb.)		
Optional Components (weight difference between base equipment and option)			
Cab	263 kg (580 lb.)	Front Loader Coupler	257 kg (566 lb.)
MFWD with Tires	220 kg (485 lb.)	Backhoe Bucket Coupler	63 kg (138 lb.)
Extendable Dipperstick	222 kg (490 lb.)		

Overall Dimensions		310SL
A	Ground Clearance, Minimum	330 mm (13 in.)
B	Overall Length, Transport	7.28 m (23 ft. 11 in.)
C	Width Over Tires	2.20 m (7 ft. 3 in.)
D	Height to Top of ROPS/Cab	2.79 m (9 ft. 2 in.)
E	Length from Axle to Axle	
	Non-Powered Front Axle	2.16 m (7 ft. 1 in.)
	MFWD Axle	2.19 m (7 ft. 2 in.)

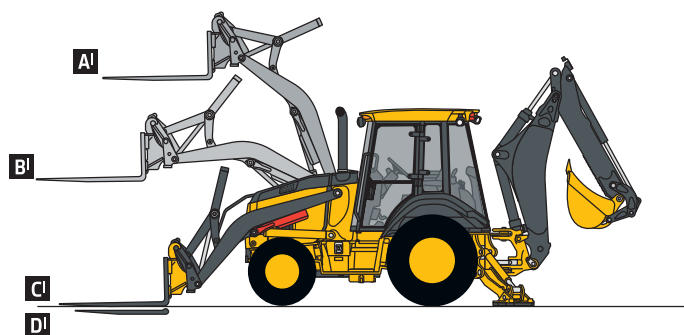


Backhoe Dimensions and Performance			
Backhoe specifications are with 610-mm x 0.21-m³ (24 in. x 7.5 cu. ft.) bucket; dipper lift specs are with a boom angle of 65 deg.			
Bucket Range	305–762 mm (12–30 in.)		
Digging Force			
Bucket Cylinder	55.0 kN (12,356 lb.)		
With Heavy-Duty Cylinder Option	67.8 kN (15,254 lb.)		
Crowd Cylinder	36.6 kN (8,229 lb.)		
Swing Arc	180 deg.		
Operator Control	2 levers		
		With Optional Extendable Dipperstick	
	With Standard Backhoe	Retracted	Extended
F Loading Height, Truck Loading Position	3.42 m (11 ft. 3 in.)	3.54 m (11 ft. 7 in.)	4.16 m (13 ft. 8 in.)
G Reach from Center of Swing Pivot	5.52 m (18 ft. 1 in.)	5.61 m (18 ft. 5 in.)	6.62 m (21 ft. 9 in.)
H Reach from Center of Rear Axle	6.58 m (21 ft. 7 in.)	6.68 m (21 ft. 11 in.)	7.68 m (25 ft. 2 in.)
I Digging Depth (SAE maximum)	4.35 m (14 ft. 3 in.)	4.50 m (14 ft. 9 in.)	5.55 m (18 ft. 2 in.)
J Digging Depth (SAE)			
610-mm (2 ft.) Flat Bottom	4.32 m (14 ft. 2 in.)	4.45 m (14 ft. 7 in.)	5.51 m (18 ft. 1 in.)
2440-mm (8 ft.) Flat Bottom	3.99 m (13 ft. 1 in.)	4.13 m (13 ft. 7 in.)	5.25 m (17 ft. 3 in.)
K Stabilizer Width, Transport	2.18 m (7 ft. 2 in.)	2.18 m (7 ft. 2 in.)	2.18 m (7 ft. 2 in.)
L Stabilizer Spread, Operating			
Standard Stabilizers	3.10 m (10 ft. 2 in.)	3.10 m (10 ft. 2 in.)	3.10 m (10 ft. 2 in.)
Optional Extended Leg	3.45 m (11 ft. 4 in.)	3.45 m (11 ft. 4 in.)	3.45 m (11 ft. 4 in.)
M Stabilizer Overall Width, Operating			
Standard Stabilizers	3.53 m (11 ft. 7 in.)	3.53 m (11 ft. 7 in.)	3.53 m (11 ft. 7 in.)
Optional Extended Leg	4.03 m (13 ft. 3 in.)	4.03 m (13 ft. 3 in.)	4.03 m (13 ft. 3 in.)
N Bucket Rotation	190 deg.	190 deg.	190 deg.
O Transport Height	3.49 m (11 ft. 5 in.)	3.49 m (11 ft. 5 in.)	3.49 m (11 ft. 5 in.)

Loader Dimensions and Performance		310SL			
P	Bucket Dump Angle, Maximum	45 deg.			
Q	Rollback Angle at Ground Level	40 deg.			
		<i>Heavy-duty</i>	<i>Heavy-duty long lip</i>	<i>Heavy-duty</i>	<i>Multipurpose</i>
	Bucket Capacity	0.86 m ³ (1.12 cu. yd.)	0.96 m ³ (1.25 cu. yd.)	1.00 m ³ (1.31 cu. yd.)	1.00 m ³ (1.31 cu. yd.)
	Width	2184 mm (86 in.)	2184 mm (86 in.)	2337 mm (92 in.)	2337 mm (92 in.)
	Weight	390 kg (860 lb.)	405 kg (892 lb.)	521 kg (1,148 lb.)	863 kg (1,902 lb.)
	Breakout Force	49.2 kN (11,052 lb.)	46.4 kN (10,442 lb.)	46.9 kN (10,541 lb.)	43.2 kN (9,722 lb.)
	Lift Capacity, Full Height	3492 kg (7,698 lb.)	3224 kg (7,108 lb.)	3352 kg (7,390 lb.)	2862 kg (6,309 lb.)
R	Height to Bucket Hinge Pin, Maximum	3.47 m (11 ft. 5 in.)	3.47 m (11 ft. 5 in.)	3.47 m (11 ft. 5 in.)	3.47 m (11 ft. 5 in.)
S	Dump Clearance, Bucket at 45 deg.	2.76 m (9 ft. 1 in.)	2.66 m (8 ft. 9 in.)	2.70 m (8 ft. 10 in.)	2.67 m (8 ft. 9 in.)
T	Reach at Full Height, Bucket at 45 deg.	678 mm (26.7 in.)	804 mm (31.7 in.)	675 mm (26.6 in.)	716 mm (28.2 in.)
U	Digging Depth Below Ground, Bucket Level	83 mm (3.3 in.)	64 mm (2.5 in.)	128 mm (5.0 in.)	124 mm (4.9 in.)
V	Length from Front Axle Centerline to Bucket Cutting Edge	1.96 m (6 ft. 5 in.)	2.10 m (6 ft. 11 in.)	2.03 m (6 ft. 8 in.)	2.08 m (6 ft. 10 in.)

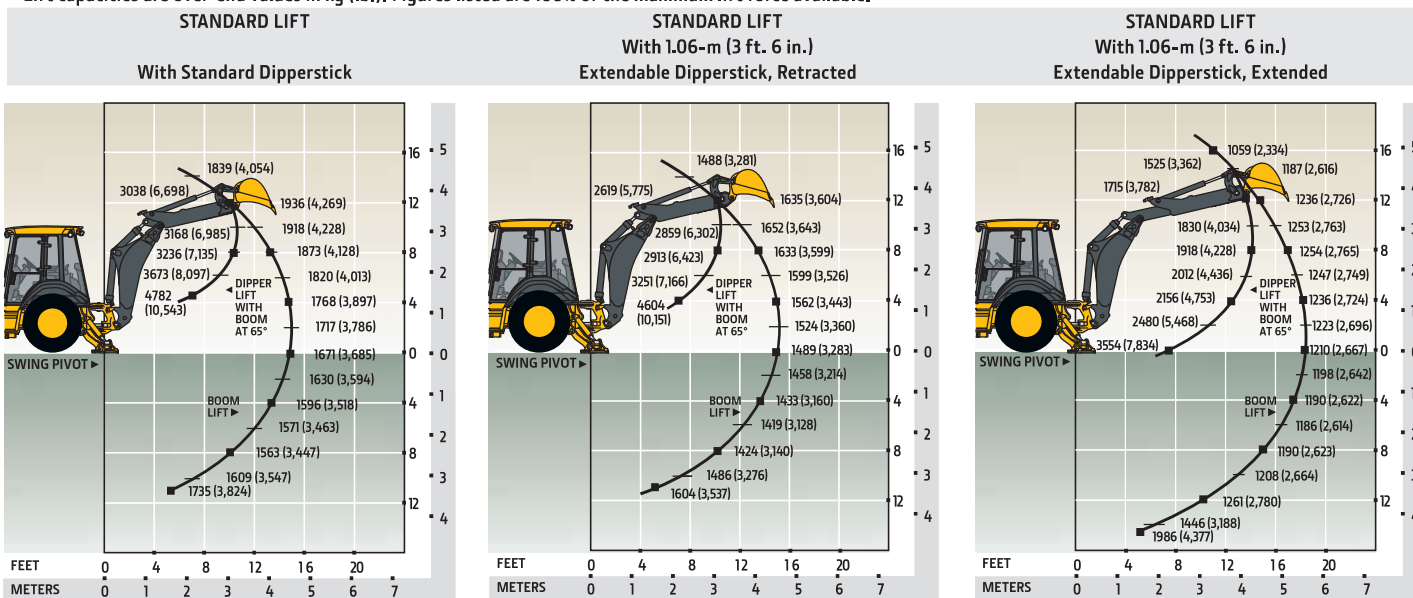
Lift Capacity with Quick-Coupler Forks

Hydraulic Capacity		1219-mm (48 in.) Tines	1524-mm (60 in.) Tines
A¹	Maximum Height	2067 kg (4,558 lb.)	1932 kg (4,260 lb.)
B¹	Maximum Reach	3183 kg (7,017 lb.)	3001 kg (6,617 lb.)
C¹	At Ground Line	4020 kg (8,863 lb.)	3768 kg (8,306 lb.)
D¹	Below Ground Line	198 mm (7.8 in.)	198 mm (7.8 in.)



Lift Capacities

Lift capacities are over-end values in kg (lb.). Figures listed are 100% of the maximum lift force available.



*Indicates capacity is stability limited. Lift capacities are over end with stabilizers down and tires tangent to ground.

Additional equipment

Key: ● Standard ▲ Optional or special See your John Deere dealer for further information.

310L EP	310L	310SL	HL	315SL	410L	710L	Engine
●	●	●	●	●	●	●	Coolant recovery tank with low-level indicator
●	●	●	●	●	●	●	Foldout, hinged cooling system
●	●	●	●	●	●	●	Serpentine belt with automatic belt tensioner
●							Viscous variable-rate cooling fan
	●	●	●	●	●	●	Electronically controlled, variable-rate suction-type cooling fan
	●	●	●	●	●	●	Self-cleaning exhaust aftertreatment system
▲	▲	▲	▲	▲	▲	▲	Chrome exhaust extension
	●	●	●	●	●		Grid heat
●						●	Glow plugs
▲	▲	▲	▲	▲	▲	▲	1,000-watt electric engine coolant heater
●	●	●	●	●	●	●	Electronic fuel lift pump
							Powertrain
●	●					●	PowerShift™ transmission: Torque converter with twist-grip Transmission Control Lever (TCL) and neutral safety switch interlock (1st through 4th gears)
		●	●	●	●		PowerShift transmission: Torque converter with twist-grip TCL and neutral safety switch interlock (1st through 5th gears)
		●	●	●	●		5th-gear overdrive
		▲	▲	▲	▲	▲	AutoShift transmission
●	●	●	●	●	●	●	Transmission oil cooler
▲	▲	▲	●	▲	▲	▲	Transmission remote oil-sampling port
●	●	●	●		●		Differential lock, electric foot actuated, protection on/off
			●			●	Differential lock, electric foot actuated
		●	●	●	●	●	Auto shutdown
●	●	●	●	●	●	●	Planetary final drives
●	●	●	●	●	●	●	Power-assisted hydraulic service brakes (conform to ISO 3450): Inboard, wet multi-disc, self-adjusting and self-equalizing
●	●	●	●	●	●	●	Parking/emergency brake with electric switch control (conforms to ISO 3450): Spring applied, hydraulically released wet multi-disc / Independent of service brakes
●	●	●	●	●	●	●	Hydrostatic power steering with emergency manual mode
▲	▲	▲	▲	▲	▲	▲	Non-powered front axle
●	●						MFWD with open differential: Electric on/off control / Sealed axle
▲	▲	●	●	●	●	●	MFWD with traction-control limited-slip differential: Electric on/off control / Sealed axle
		●	●	●	●		Automatic MFWD braking (4th and 5th gear overdrive only)
●	●					●	Automatic MFWD braking (4th gear only)
▲	▲	▲	▲	▲	▲		MFWD driveshaft guard
							Backhoe
			●		●	●	Lift mode
			●		●	●	Precision mode
●	●						Standard dipperstick digging depth
							4.27 m (14 ft. 0 in.)

310L EP	310L	310SL	HL	315SL	410L	710L	Backhoe (continued)
		●					Standard dipperstick digging depth (cont.)
							4.34 m (14 ft. 3 in.)
				●			4.17 m (13 ft. 8 in.)
			●				4.59 m (15 ft. 1 in.)
					●		4.83 m (15 ft. 10 in.)
						●	5.25 m (17 ft. 3 in.)
							Extendable dipperstick extension
▲	▲	▲	▲	▲			1.06 m (3 ft. 6 in.)
					▲		1.21 m (4 ft. 0 in.)
						▲	1.37 m (4 ft. 6 in.)
		▲	●	▲	●		Heavy-duty backhoe bucket cylinder
●	●	●		●	●	▲	ISO (Deere) 2-lever mechanical backhoe controls
▲	▲	▲	●	▲	▲	▲	2-lever pilot controls with pattern-selection feature
●	●	●	●	●	●	●	Backhoe transport lock lever
●	●	●	●	●	●	●	Swing lock pin stored in operator's station
●	●	●	●	●	●	●	Stabilizers with 2-direction anti-drift valves
		▲	●		●	●	Extended (long) stabilizers with reversible pads
		▲	▲	▲	▲		Severe-duty backhoe bucket with lift loops
▲	▲	▲	▲	▲	▲		Backhoe couplers for John Deere, Case, and Cat buckets
▲	▲	▲	▲	▲	▲	▲	Auxiliary backhoe valve with 1-way flow for hammers and compactors with plumbing
▲	▲	▲	▲		▲	▲	Auxiliary backhoe valve with 1- and 2-way flow for swinggers, thumbs, augers, etc. (plumbing not included)
▲	▲	▲	▲		▲		Hydraulic thumb
		▲	▲		▲		Rear hydraulic coupler
		▲	▲	▲	▲		Spring-type coupler
							Loader[†]
●	●	●	●	●	●	●	Loader bucket anti-spill (rollback)
●	●	●	●	●	●	●	Return-to-dig feature
●	●	●	●	●	●	●	Single-lever control with electric clutch disconnect
●	●	●	●	●	●	●	Bucket-level indicator
●	●	●	●	●	●	●	Loader boom service lock
▲	▲			▲			Auxiliary loader hydraulics with 2-lever control
▲	▲	▲	▲	▲	▲	▲	Auxiliary loader hydraulics with single control lever with EH auxiliary control (MFWD and clutch disconnect)
▲	▲	▲	▲	▲	▲	▲	Hydraulic coupler for buckets, forks, etc.
▲	▲	▲	▲	▲	▲	●	Ride control
		▲	▲		▲		Auto ride control
							[†] See dealer for range of heavy-duty, multipurpose, and coupler buckets and forks.
							Hydraulic System
●							128-L/m (33.7 gpm) backhoe flow, 104-L/m (27.5 gpm) loader flow; open-center system, axial-piston pump
	●						106-L/m (28 gpm) single-gear pump, open-center system

Net engine power is with standard equipment including air cleaner, exhaust system, alternator, and cooling fan at test conditions specified per ISO 9249. No derating is required up to 1500-mm (5,000 ft.) altitude for the 310L EP. Specifications and design are subject to change without notice. Wherever applicable, specifications are in accordance with ISO standards. Except where otherwise noted, these specifications are based on 310L EP and 310L units with 19.5L-24-in. 12PR (R4) tubeless rear and 12.5/80-18 12PR (F3) front tires, and 0.86-m³ (1.12 cu. yd.) loader buckets; a 310SL unit with 19.5L-24-in. 12PR (R4) tubeless rear and 12.5/80-18 10PR (R4) front tires, and 1.00-m³ (1.31 cu. yd.) loader bucket; a 310SL HL unit with boost mode, 21L-24 in. 12PR (R4) tubeless rear and 12.5/80-18 10PR (R4) front tires, and 1.00-m³ (1.31 cu. yd.) loader bucket; a 315SL unit with 16.9L-28 R4 (12) tubeless rear and 12.5/80-18 10PR (R4) front tires, and 1.00-m³ (1.31 cu. yd.) loader bucket; a 410L unit with 21L-24-in. 12PR (R4) tubeless rear and 12.5/80-18 10PR (R4) front tires, and 1.15-m³ (1.5 cu. yd.) loader bucket; and a 710L unit with 21L-28-in. 18PR (R4) tubeless rear and 15-19.5-in. 12PR (R4) front tires, and 1.24-m³ (1.62 cu. yd.) loader bucket.

Additional equipment *(continued)*

Key: ● Standard ▲ Optional or special See your John Deere dealer for further information.

310L EP	310L	310SL	HL	315SL	410L	710L	Hydraulic System <i>(continued)</i>
		●		●			136-L/m (36 gpm) tandem-gear pump, open-center system
			●		●		159-L/m (42 gpm) axial-piston pump, PCLS system
						●	197-L/m (52 gpm) axial-piston pump, PCLS system
		●	●	●	●	●	Auto-idle
●	●	●	●	●	●	●	Economy mode
●	●	●	●	●	●	●	Dedicated hydraulic reservoir
Electrical System							
●	●	●	●	●	●	●	12-volt system
●	●	●	●		●		120-amp alternator (canopy and quarter cab)
●							130-amp alternator (cab)
●	●	●	●	●	●	●	160-amp alternator (cab)
●	●	●	●	●	●		Single battery with 180-min. reserve capacity and 925 CCA
▲	▲	▲	▲	▲	▲	●	Dual batteries with 360-min. reserve capacity and 1,850 CCA
▲	▲	▲	▲	▲	▲	▲	Remote jump posts and battery disconnect
Lights							
●	●	●	●	●	●	●	Halogen lights (10), 32,500 candlepower each (4 front driving/working, 4 rear working, and 2 side docking)
●	●	●	●	●	●	●	Turn signal/flashing (2 front and 2 rear)
●	●	●	●	●	●	●	Rear stop and tail (2)
▲	▲	▲	▲	▲	▲	▲	LED light package
Operator's Station							
●	●	●	●		●	●	Modular-design ROPS/FOPS (Level 2) canopy with molded roof (meets ISO 3449 and ISO 3471/SAE J1040): Isolation mounted
●	●	●	●	●	●	●	Molded floor mats (with pilot controls only)
●	●	●	●	●	●	●	12-volt outlet
●	●	●	●	●	●	●	Lockable right-side storage
▲	▲	▲	▲	▲	▲	▲	Lockable left-hand storage with cup holders
▲	▲	▲	▲	▲	▲	▲	Interior front-view mirror
▲	▲	▲	▲	▲	▲	▲	Outside rearview mirrors
●	●	●	●	●	●	●	Rotary-dial hand throttle
●	●	●	●	●	●	●	Suspended foot throttle
●	●	●	●	●	●	●	Cloth seat (with cab only)
▲	▲	▲	▲	▲	▲	▲	Air-suspension heated seat (with cab only)
▲	▲	▲	▲	▲	▲	▲	Air-suspension vinyl seat
●	●						Key start switch with electric fuel shutoff
●	●	●	●	●	●	●	Tilt steering, infinitely adjustable (with cab only)
▲	▲	▲	▲		▲	▲	Tilt steering, infinitely adjustable (with canopy and quarter cab)
		●	●	●	●	●	Keyless start
▲	▲	●	●	●	●	●	Machine security (enabled through monitor)
●	●	●	●	●	●	●	Digital display of engine hours, engine rpm, and system voltage
		●	●	●	●	●	Sealed-switch module (SSM)

310L EP	310L	310SL	HL	315SL	410L	710L	Operator's Station <i>(continued)</i>
		●	●	●	●	●	Multi-function lever: Turn signals / Windshield wipers / Some light functionality
●	●	●	●	●	●	●	Monitor system with audible and visual warnings: Engine air restriction / Low alternator voltage / Engine oil pressure / Hydraulic filter restriction / Parking brake on/off / Aftertreatment temperature / Transmission fluid temperature / Fuel / Hour meter / Machine diagnostic information via 4-push-button/LCD operator interface
●	●	●	●		●	●	Canopy: Mechanical-suspension deluxe vinyl swivel seat with lumbar adjustment and armrests (fully adjustable)
▲	▲	▲					Quarter Cab: Mechanical-suspension deluxe vinyl swivel seat with lumbar adjustment and armrests (fully adjustable), front windshield, and windshield wiper (1 front)
▲	▲	▲	▲	●	▲	▲	Cab with Dual Doors and A/C: Mechanical-suspension deluxe fabric swivel seat with lumbar adjustment / Headliner, dome light, left and right cab doors, tinted safety glass, windshield wipers (1 rear and 1 front), front windshield washer, fresh-air intake, and heater/defroster/pressurizer (11.7-kW [40,000 Btu/h] heater) / A/C (7.6-kW [26,000 Btu/h] output and CFC-free R134a refrigerant)
▲	▲	▲	▲	▲	▲	▲	AM/FM/weather-band (WB) radio (with cab only)
▲	▲	▲	▲	▲	▲	▲	Premium radio package (with cab only; includes additional 12-volt and USB outlets)
Overall Vehicle							
●	●	●	●	●	●	●	1-piece unitized construction mainframe
●	●	●	●	●	●	●	Vehicle tie-downs (2 front and 2 rear)
●	●	●	●	●	●	●	Remote grease bank for front axle
●	●	●	●		●		Front bumper cover
▲	▲	▲	▲	●	▲		Heavy-duty front bumper
▲	▲	▲	▲	▲	▲	●	Front counterweight – 204 kg (450 lb.), 272 kg (600 lb.), 340 kg (750 lb.), 454 kg (1,000 lb.), 567 kg (1,250 lb.), or 680 kg (1,500 lb.)
▲	▲	▲	▲	▲	▲		Rubber grille bumpers
●	●	●	●	●	●		Fuel tank, 128.71 L (34 gal.), ground-level fueling
						●	Fuel tank, 174.1 L (46 gal.), ground-level fueling
●	●	●	●	●	●	●	2-position easy-tilt hood
●	●	●	●	●	●	●	Extended grille frame
●	●	●	●	●	●	●	Toolbox with padlock hasp
●	●	●	●	●	●	●	Vandal protection for locking monitor, engine hood, toolbox, hydraulic reservoir, and fuel tank
●	●	●	●	●	●	●	Reverse warning alarm
●	●	●	●	●	●	●	Dent-resistant full-coverage rear fenders
▲	▲	▲	▲	▲	▲	▲	Backhoe boom-protection plate
▲	●	●	●	●	●	●	JDLink™ wireless communication system (available in specific countries; see your dealer for details)

Net engine power is with standard equipment including air cleaner, exhaust system, alternator, and cooling fan at test conditions specified per ISO 9249. No derating is required up to 1500-mm (5,000 ft.) altitude for the 310L EP. Specifications and design are subject to change without notice. Wherever applicable, specifications are in accordance with ISO standards. Except where otherwise noted, these specifications are based on 310L EP and 310L units with 19.5L-24-in. 12PR (R4) tubeless rear and 12.5/80-18 12PR (F3) front tires, and 0.86-m³ (1.12 cu. yd.) loader buckets; a 310SL unit with 19.5L-24-in. 12PR (R4) tubeless rear and 12.5-80/18 10PR (R4) front tires, and 1.00-m³ (1.31 cu. yd.) loader bucket; a 310SL HL unit with boost mode, 21L-24 in. 12PR (R4) tubeless rear and 12.5/80-18 10PR (R4) front tires, and 1.00-m³ (1.31 cu. yd.) loader bucket; a 315SL unit with 16.9L-28 R4 (12) tubeless rear and 12.5-80/18 10PR (R4) front tires, and 1.00-m³ (1.31 cu. yd.) loader bucket; a 410L unit with 21L-24-in. 12PR (R4) tubeless rear and 12.5/80-18 10PR (R4) front tires, and 1.15-m³ (1.5 cu. yd.) loader bucket; and a 710L unit with 21L-28-in. 18PR (R4) tubeless rear and 15-19.5-in. 12PR (R4) front tires, and 1.24-m³ (1.62 cu. yd.) loader bucket.