

PAS 150 HF T4F

Diesel - Qmax 510 m³/h (2,250 USgpm) - Hmax 51 m (167 ft)

Authorized Distributor:
CDPW Inc. - 710 W. Park Ave.
Edgewater, FL 32132
(386) 426-1345
sales@cdpwinc.com



Indicative picture of the product

PAS HF - Vacuum prime centrifugal pumps

The pump system consists of a centrifugal pump and a separator, which enables air to be separated from the liquid and be sucked by a vacuum pump - making automatic priming possible. Even with suction heights of several meters the machine rapidly evacuates the air from the suction pipe and starts to pump. Additionally, thanks to the semi-open impeller, the PAS HF range is also suitable for pumping liquids with solids in suspension.

Applications

Both Atlas Copco and Varisco have decades of experience in designing and producing pumps. We have put those years of expertise into providing a solutions portfolio that works across multiple applications. The PAS HF (high flow) range is packed with features that not only meet, but exceed the needs of the market. We are focused on an efficient, extremely versatile pump that is suitable for many industries, including construction, general dewatering and emergency applications, such as flood clean up.

Benefits

Pump

High efficiency: 70% (B.E.P)

Rapid "dry" priming

Up to a height of 7,5 m (24.6 ft)

High resistance

To abrasive liquids and turbid sandy waters

Semi-open impeller

Solids handling up to 76 mm (3")

Diaphragm vacuum pump

Oil free suitable for dry running: no contamination of the environment

Mechanical shaft seal in oil bath

It allows the "dry running" operation of the pump

Wear plate

Cast iron wear plate that is easily replaceable

Easy maintenance

Hinged cover for direct access to the impeller (without lifting devices). Link belt quick to replace on the field.

PAS 150 HF T4F

Performance curves

Authorized Distributor:
CDPW Inc. - 710 W. Park Ave.
Edgewater, FL 32132
(386) 426-1345
sales@cdpwinc.com

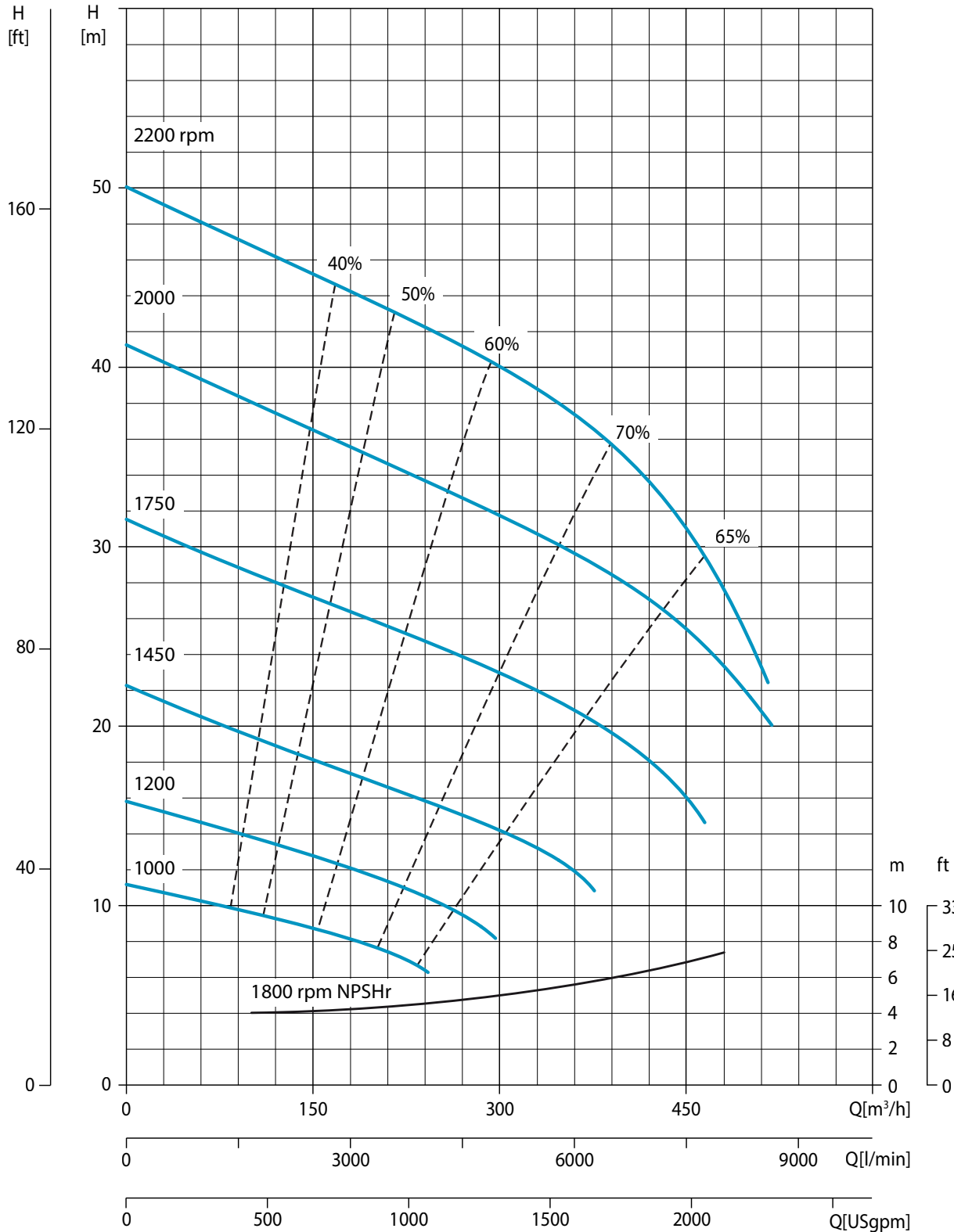
Test according to UNI EN ISO 9906 standard - level 2

Test liquid: clean water, density 1,000 kg/m³

Spherical solids handling: D.76 mm (3")

Priming time: 30 s from 1,5 m (4.9 ft)

Max absorbed power: 51,0 kW - 68.4 HP (2.200 rpm)



PAS 150 HF T4F

Technical data

Authorized Distributor:
CDPW Inc. - 710 W. Park Ave.
Edgewater, FL 32132
(386) 426-1345
sales@cdpwinc.com

Pump

Model	PAS 150 HFST4F
Qmax	510 m³/h - 8.500 l/min (2,250 USgpm)
Hmax	51 m (167 ft)
Q max eff.	390 m³/h - 6.500 l/min (1,700 USgpm)
Eff. max	70 %
Suction port	Flanged - ANSI 150
Delivery port	Flanged - ANSI 150
Impeller type	Semi-Open, 2 vane
Solids handling	76 mm (3.0 ")
Material	G11
Casing	EN-GJL-200 cast iron
Impeller	EN-GJS-500 ductile iron
Wear plates	EN-GJL-200 cast iron
Number of plates	1
Shaft	39NiCrMo4 steel
Flushing	Yes
Mechanical seal	Tungsten carbide / Tungsten carbide
Elastomers	VITON
Lubrication	Oil

Priming system

Vacuum pump	V20
Vacuum pump type	Diaphragm
Nominal air capacity	50 m³/h (29.4 cfm)
Max vacuum	0,9 bar
Separator type	-
Separator material	EN-GJL-200 cast iron
Drives	Link belt

Engine

Make	Kohler					
Model	KDI 2504TCR					
Type	Diesel turbo common rail					
Displacement	2.482 cm³ (151 in³)					
No. cylinders	4					
Cooling	Liquid with radiator					
Rpm type	Variable					
Standard speed	2.200 rpm					
US emissions	EPA Tier 4F					
Starting	Electric					
Starting voltage	12 V					
Oil change interval	500 h					
Speed [rpm]	1200	1400	1600	1800	2000	2200
Power [kW]*	32	39,6	45	47,7	49,1	49,7
Power [HP]	42.9	53.1	60.4	64.0	65.9	66.7

* continuous power ISO 3046 ICXN

Control panel

Model	PW 750
	Manual operation
	Automatic operation: start-stop with transducers or floats
	Digital display with 6 languages (EN, SV, FR, DE, ES, IT) with:
	Hour meter, Rev counter, Liquid temperature, Oil pressure and temperature
	Battery voltmeter, Fuel level (%) and consumption (l/h)
	Automatic engine shutdown in case of:
	- low oil pressure
	- engine overheating
	- low battery voltage
	(engine failure alarms with LED lights and display message)
	Service time (hours)
	Emergency stop button
	Push-button accelerator (up/down)
	(PW1 FleetLink control as option)

PAS 150 HF T4F

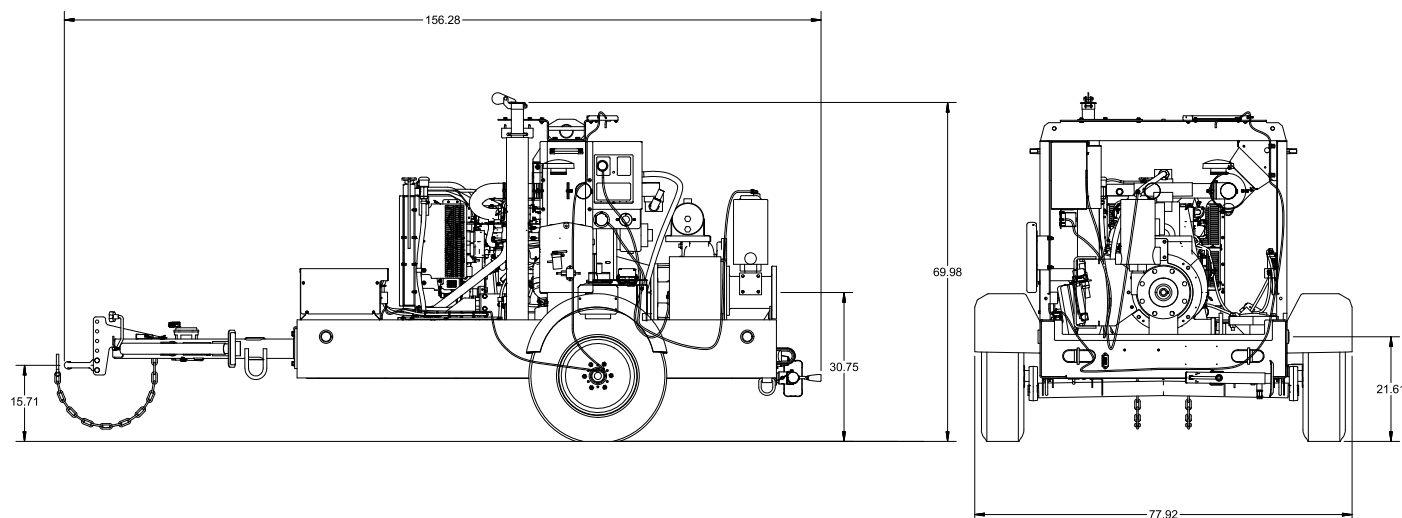
Arrangement

Authorized Distributor:
CDPW Inc. - 710 W. Park Ave.
Edgewater, FL 32132
(386) 426-1345
sales@cdpwinc.com

Technical data

Material	ASTM A36 steel
Coatings	Polyester powder, average thickness of 3 MIL
Features	Lifting beam
Battery	Acid charge Pb-Ca maintenance free, 12 V - 1100 CCA
Tank	54 USG
Locking keys	Fuel cap
Fuel consumption	3.5 US Gal/hr @2200 rpm @BEP
H suction port	31 in (2.6 ft)
Dry weight	4085 lbs

Dimensional





Atlas Copco



Surface pumps solutions

PAS range









Authorized Distributor:
CDPW Inc. - 710 W. Park Ave.
Edgewater, FL 32132
(386) 426-1345
sales@cdpwinc.com

Surface dewatering pumps

The surface dewatering pumps range are designed and developed to offer high performance, reliability and ease of use across multiple industries for applications like construction and mine site dewatering, removing floodwater, and other municipal applications.

At Atlas Copco, we understand pumps, their application and most importantly, the people using them. We have a complete range of diesel and electric driven pumps, that offer durability and long life. Modular design offers flexibility in packaging and easy servicing of wear components means less down time and more pumping without stopping.



 UP TO 3.5 inch SOLIDS HANDLING	 MAX. HEAD UP TO 233 ft	 MAX. FLOW UP TO 9510 USgpm	HINGE DOOR  03 min CLEAN-UP AND RESTART
COMPACT SIZE with maximum flow 	ROAD TOWING  CERTIFIED TRAILER	SOUND PROOF ENCLOSURE 	 CONNECTED FLEET LINK SECURED

* Data may change depending on model.

Authorized Distributor:
CDPW Inc. - 710 W. Park Ave.
Edgewater, FL 32132
(386) 426-1345
sales@cdpwinc.com

Atlas Copco

There is a surface pump for any surface dewatering application



1. Oil & Gas

Pipelines used to transport crude oil or natural gas must be dewatered to guarantee the quality of the hydrocarbons and prevent the formation of hydrates and protect pipes from internal corrosion.

Ballasting process requires robust high performing pumps which, based on the needs, pumps sea water in and out of the shipyard tank during the loading and unloading of water vessels.

Application

- Ballasting
- Pipeline hydrostatic test
- Drilling
- Pipeline flushing



2. Mining and Quarry

For dewatering applications in the mines post dredging, our pumps offer effective and efficient solutions due to their solids handling capability.

Application

- Dewatering
- Water relaunching
- Washplants
- Slit and Sludge removal



3. Municipalities

Municipal public service applications can vary from sewage bypass to wastewater treatment plants to water reclamation centers. When wastewater is being treated, our pumps handle the fluids and solids without clogging or failing.

Application

- Sewage bypass
- Dewatering
- Emergency water treatment



4. Construction

On Construction site, during casting of foundation it becomes critical to avoid water infiltration. Our pumps have got you covered.

Application

- Site drainage
- Jetting



5. Industry

The effluent produced by different industries should be treated, relaunched or drained. With the availability of different materials for our wet ends, we offer a complete solution.

Application

- Effluent handling and transporting
- Waste drainage and disposals
- Temporary firefighting protection



6. Civil works

Modern day civil engineering projects are fast paced. Be it construction of road, dams, bridges, airports or building, site dewatering and drainage, before and during construction work is very important.

Application

- Sump water removal
- Dewatering



7. Floods controls

Our pumps, due to their high performance and portability, are effective to provide quick solutions in case of flood emergency.

Application

- Emergency



8. Rental

Rental application requires robust and long running products. Our start and forgot control panels and more than 24 hours fuel autonomy make them ideal for such applications

Application

- General construction
- Flood controls
- Industry
- Mine and quarry dewatering

PAS range

The **PAS range** of dry prime pumps are engineered to offer high performance in any conditions. Comprising of a air separator unit and a vacuum pump, it offers rapid automatic priming. Even with suction heights of several meters, the machine rapidly evacuates the air from the suction pipe and starts to pump.

Additionally, thanks to the semi-open impeller, the **PAS range** is also suitable for pumping liquids with solids in suspensions.

SOLIDS HANDLING CAPABILITY

- The whole range can handle high solids.



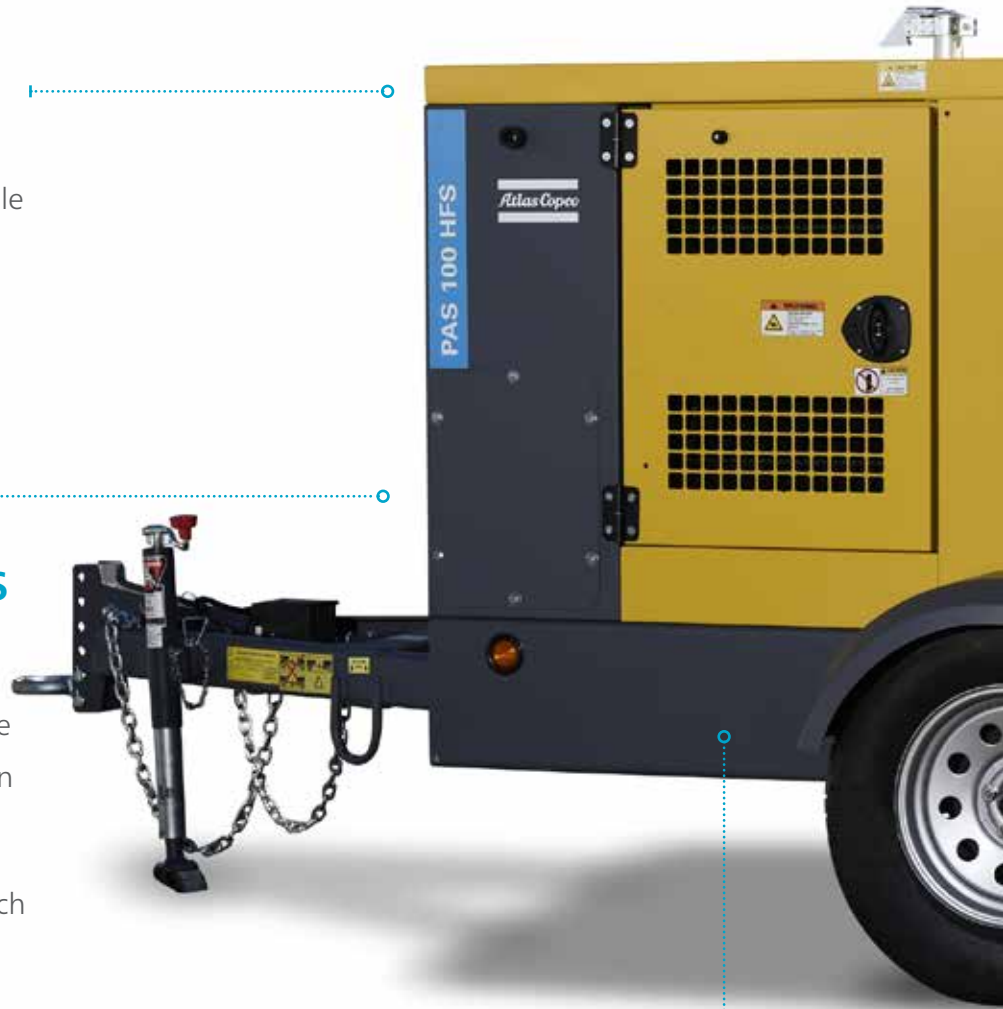
FLEETLINK TELEMATICS SOLUTION

- Monitor your machines conveniently wherever you are
- All vital machine parameters in real time on hand
- Access of application information such as float switch position or sensor values



FLEX-MOUNT SYSTEM

- Integrated vibration mounts eliminate unwanted vibration.



Authorized Distributor:
CDPW Inc. - 710 W. Park Ave.
Edgewater, FL 32132
(386) 426-1345
sales@cdpwinc.com

Atlas Copco

INTEGRATED CONTROL AND POWER CUBICLE

- Digital controller with standard warnings, shutdown, stop/start function, emergency stop and easy-to-access and read diagnostics. Configurable set point via transducer to control engine speeds.



SERVICEABILITY IN ANY CONDITIONS

- Patented Hinged door access guarantees easy clean-up with minimal downtime.
- All wear components are easily accessible with minimal downtime.
- Easy replacement of the wear components (Impeller and wear plates).
- Trimming plate to guarantee the hydraulic performance as an emergency reserve, before scheduled maintenance.

**EASY
MAINTENANCE**
**3 MIN
CLEAN-UP**



Key options

- Impeller CF3M
- Wear plate CF3M
- Stainless steel shaft
- Zinc anodized

Key features

- Hinge Kit
- Trimming plate*
- Diaphragm vacuum pump
- Dry running system
- PW 750 control panel

Authorized Distributor:
CDPW Inc. - 710 W. Park Ave.
Edgewater, FL 32132
(386) 426-1345
sales@cdpwinc.com

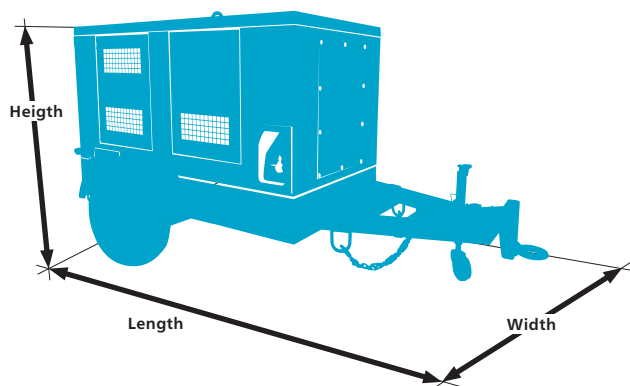
* Available options may change depending on model selected.

PAS range

Technical data



Specifications		PAS 100 HF T4F KD	PAS 150 HF T4F KD	PAS 200 HF T4F PD	PAS 300 HF T4F VD	PAS 100 HFS T4F KD	PAS 150 HFS T4F KD	PAS 200 HFS T4F PD	PAS 300 HFS T4F VD
Max. head	ft	164	167	164	233	164	167	164	233
Max. capacity	Usgpm	1230	2250	3740	9510	1230	2250	3740	9510
Suction / discharge size	inch	ANSI 4"	ANSI 6"	ANSI 8"	ANSI 12"	ANSI 4"	ANSI 6"	ANSI 8"	ANSI 12"
Max. solids handling	inch	3	3	3	3,5	3	3	3	3,5
Best efficiency point	%	70	70	75	72	70	70	75	72
Max. absorbed power	HP	39	68	105	262	39	68	105	262
Engine									
Emission compliance		EPA Tier 4 final	EPA Tier 4 final	EPA Tier 4 final	EPA Tier 4 final	EPA Tier 4 final	EPA Tier 4 final	EPA Tier 4 final	EPA Tier 4 final
Max. engine power	HP	49	74	100	285	49	74	100	285
Max. operating speed	rpm	2200	2200	2200	1600	2200	2200	2200	1600
Min. fuel autonomy	hrs	17	17	18	9	17	17	18	9
Weight and dimensions									
Weight (dry)	lbs	3105	4085	5100	7720	3400	4600	5500	9480
Length	inch	138	150	157	128	138	150	157	154
Width	inch	70	76	76	76	70	76	76	79
Height	inch	68	72	77	85	68	72	77	87

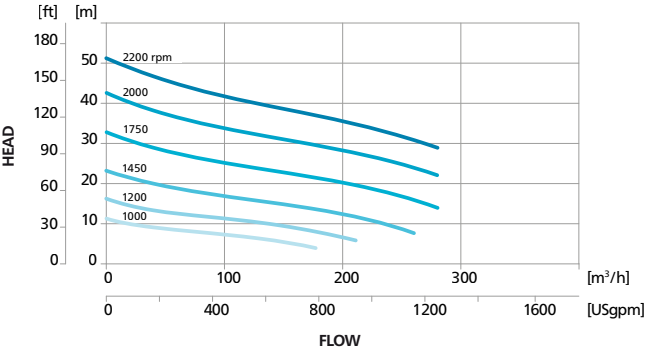


Authorized Distributor:
CDPW Inc. - 710 W. Park Ave.
Edgewater, FL 32132
(386) 426-1345
sales@cdpwinc.com

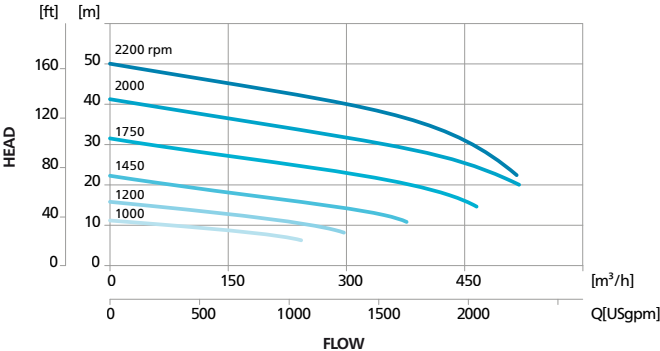
Atlas Copco

Performance curves

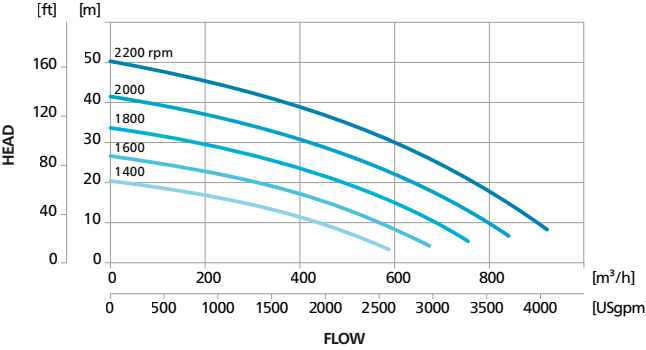
 **PAS 100 HF T4F KD**



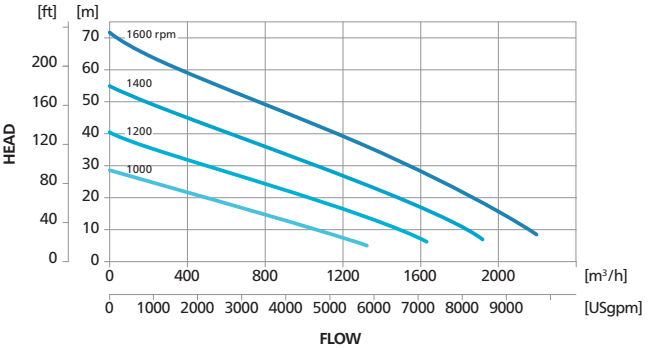
 **PAS 150 HF T4F KD**



 **PAS 200 HF T4F KD**



 **PAS 300 HF T4F VD**



Product portfolio

GENERATORS

PORTABLE 1,6–12 kVA



MOBILE 25-1,200* kVA



*Multiple configurations available to produce power for any size application

DEWATERING PUMPS

ELECTRIC SUBMERSIBLE up to 6,100 US gpm



SURFACE PUMPS up to 8,500 US gpm



Diesel and electric options available

LIGHT TOWERS

METAL HALIDE



DIESEL LED ELECTRIC LED



AIR COMPRESSORS AND HANDHELD TOOLS

AIR COMPRESSORS 110-1,800 cfm 58-508 psi



HANDHELD TOOLS Pneumatic Hydraulic Petrol engine driven



ONLINE SOLUTIONS

SHOP ONLINE PARTS ONLINE

Find and order the spare parts for power equipment. We handle your orders 24 hours a day.



POWER CONNECT

Scan the QR code on your machine, and go to the QR Connect Portal to find all the information about your machine.



LIGHT THE POWER YOUR SIZING TOOL

A useful calculator to help you choose the best solution for your power and light needs



FLEETLINK

Intelligent telematics system that helps optimize fleet usage, reduce maintenance costs, ultimately saving time and cost.



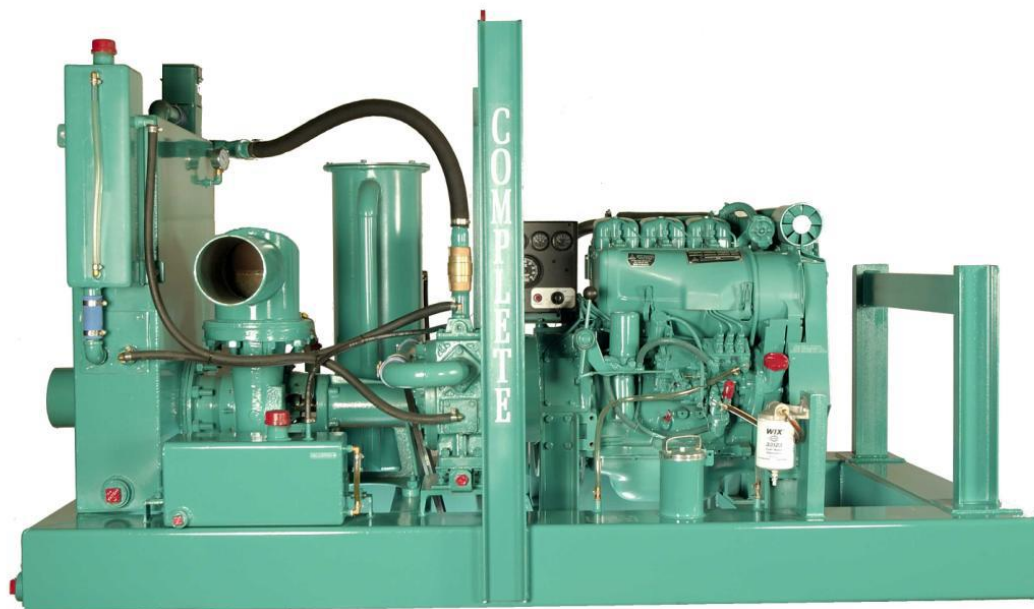
Atlas Copco

Atlas Copco AB
atlascopco.com

Authorized Distributor:
CDPW Inc. - 710 W. Park Ave.
Edgewater, FL 32132
(386) 426-1345
sales@cdpwinc.com

Wellpoint Pumps – Diesel 4 inch to 10 inch discharge

The Complete AutoPrime™ Wellpoint Pump has been the industry standard for wellpoint and sock underdrain dewatering since 1923. The VAWP series integrates our unique vacuum system with high performance centrifugal pumps for maximum performance in air handling and water volume. The rotary vane vacuum system is independent of the centrifugal pump, with no cross contamination to wear on vacuum pump tolerances. Available in sizes from 4" to 10", diesel or electric powered.



Model*	4VAWP	6VAWP	8VAWP	8VAWP HH	10VAWP
Suction / Discharge	6" x 4"	6" x 6"	8" x 8"	8" x 8"	10" x 10"
Max. Flow Rate (GPM)	870	1,400	2,700	2,600	4,400
Max. TDH (ft.)	75'	102'	90'	144'	108'
Vacuum Pump model	C3-OF	C5W-OF	C10W-OF	C10W-OF	C10W-OF
Vacuum Pump Flow (cfm)	65	130	200	200	200
Fuel Capacity (gallons)	52	64	64	72	72
Engine Model** (EPA Final Tier 4)	Isuzu 3CH1	Isuzu 4LE2T	Isuzu 4LE2X	Deutz TCD3.6	Deutz TCD3.6
Power (BHP @ RPM)	18 @ 2,100	43 @ 2,000	55 @ 1,800	100 @ 1,800	80 @ 1,800
Size L x W x H (inches)	78 x 46 x 62	110 x 50 x 70	110 x 50 x 70	126 x 50 x 70	126 x 50 x 70
Dry Weight (pounds)	2,200	3,200	3,600	5,000	5,000

*Specify model VAWP = Vacuum Assist WellPoint Pump

**other engines available

"The finest dewatering pumps and wellpoint equipment since 1923"

Wellpoint Pumps (VAWP) 4 to 10 inch discharge units



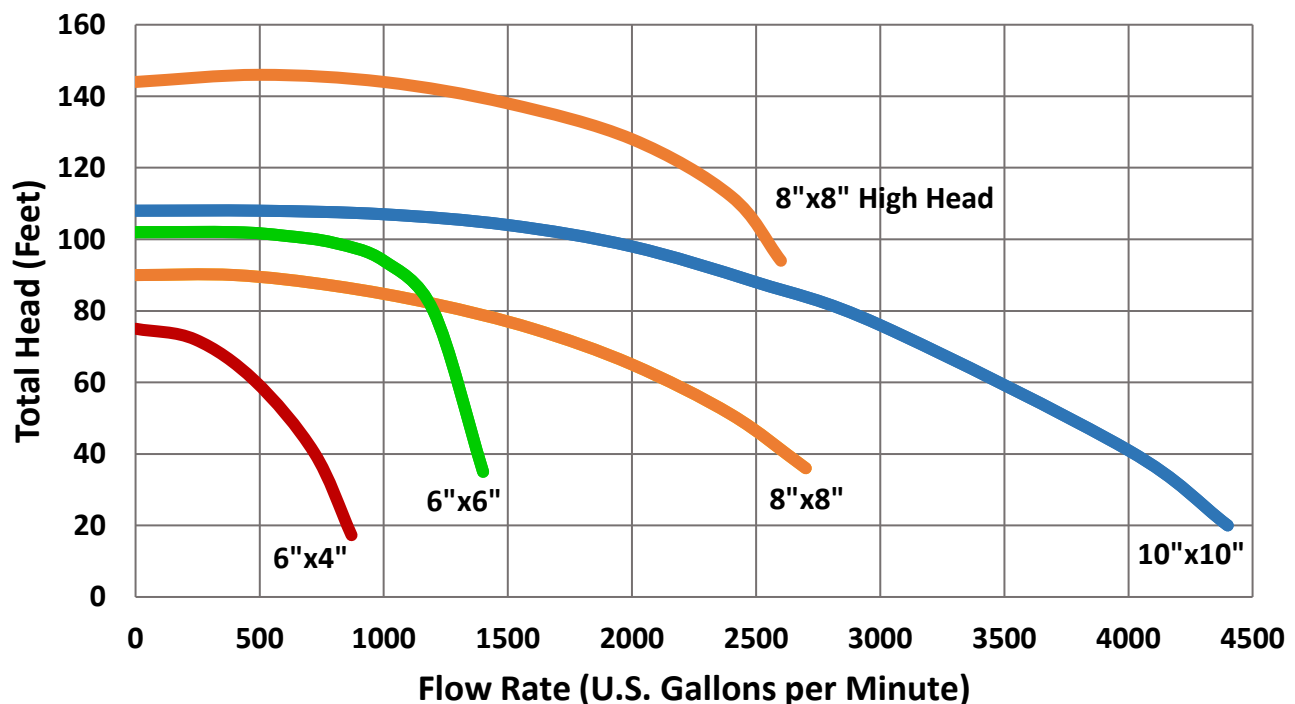
Standard Features:

- Pumping flow rate to 4,400 GPM; Heads to 144 ft. TDH
- Complete Vacuum Assist System with a high-volume rotary vane vacuum pump
- Large steel air / water separation tank with automatic peeler valve assembly
- Closed loop vacuum oil recovery system with cyclonic vacuum oil reclaimer
- High performance cast iron centrifugal end suction pump
- Lockable fuel cap, Battery hold-down, Single point lifting bail, Discharge check valve, and Volute drain
- Skid mounted integral fuel tank sized for 18-24hr run time; clean out ports at all four corners
- Standardized parts across all sizes
- Full instrumentation panel with safety shutdowns
- Special fuel filtration system for removing dirt and water from diesel fuel
- Diesel engine (Tier 3 rebuilt or Tier 4 new) or Electric motor options available

Options:

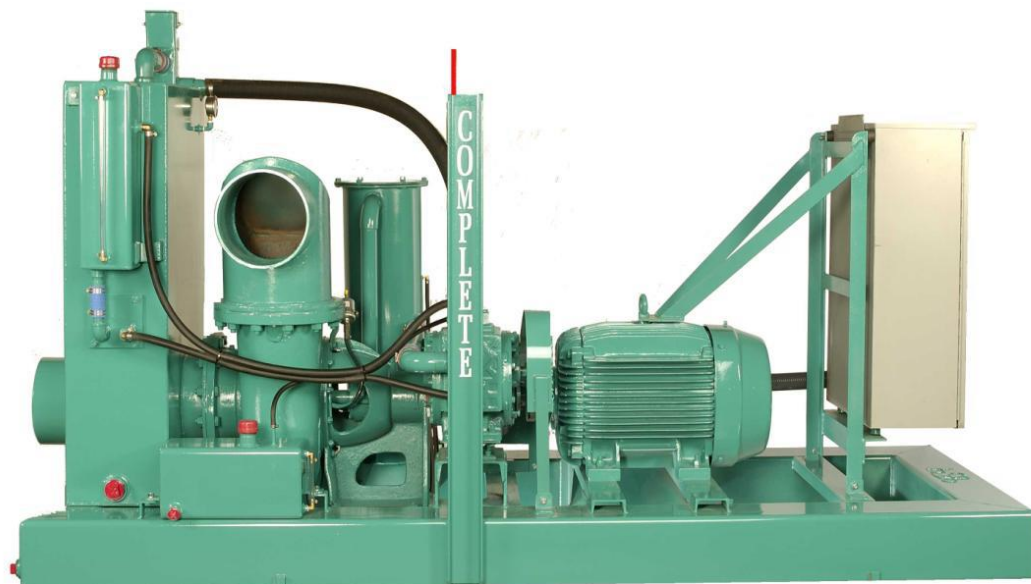
- Increased fuel capacity
- Vacuum pump upgrade
- "Whisper Pack" full or partial enclosures
- Engines: Deutz, Isuzu, John Deere, Hatz, Kohler, or Perkins (additional engines available upon request)
- Trailer mounted: Highway wheels / tires, Torsion bar axle, DOT light kit, Highway fenders, Tow hitch, DOT Certificate of Origin, and Brake kit
- Camlock or Bauer type suction and discharge fittings (please consult CDPW for additional fittings)

CDPW Vacuum Assisted Wellpoint Pumps



Wellpoint Pumps – Electric 4 inch to 10 inch discharge

The Complete AutoPrime™ Wellpoint Pump has been the industry standard for wellpoint and sock underdrain dewatering since 1923. The VAWP series integrates our unique vacuum system with high performance centrifugal pumps for maximum



performance in air handling and water volume. The rotary vane vacuum system is independent of the centrifugal pump, with no cross contamination to wear on vacuum pump tolerances. Available in sizes from 4" to 10", diesel or electric powered.

Model*	4VAWP	6VAWP	8VAWP	10VAWP
Suction / Discharge	6" x 4"	6" x 6"	8" x 8"	10" x 10"
Max. Flow Rate (GPM)	830	1,400	2,700	4,400
Max. TDH (ft.)	68'	102'	84'	108'
Vacuum Pump model	C3-OF	C5W-OF	C10W-OF	C10W-OF
Vacuum Pump Flow (cfm)	65	130	200	200
Electric Motor (3 phase only)	TEFC 20 Hp 4-pole, 60 Hz	TEFC 40 Hp 4-pole, 60 Hz	TEFC 50 Hp 4-pole, 60 Hz	TEFC 75 Hp 4-pole, 60 Hz
Voltage**	200 / 230 / 460	230 / 460	230 / 460	460
Amps**	52.4 / 47.4 / 23.7	93 / 46.5	114.6 / 57.3	86.4
Size L x W x H (inches)	78 x 46 x 62	104 x 50 x 70	105 x 50 x 70	114 x 50 x 70
Dry Weight (pounds)	2,000	3,000	3,400	4,800

*Specify model VAWP = Vacuum Assist WellPoint Pump

**other voltages available, consult factory

"The finest dewatering pumps and wellpoint equipment since 1923"

Wellpoint Pumps (VAWP) 4 to 10 inch discharge units



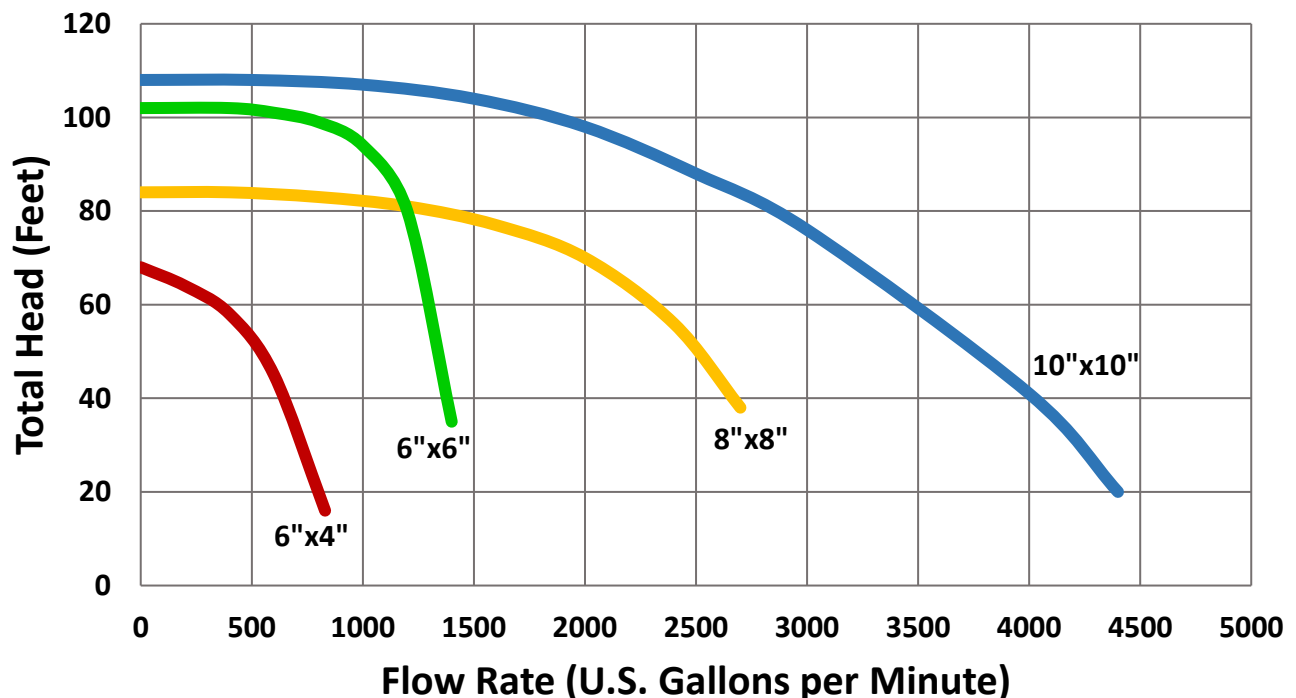
Standard Features:

- Pumping flow rate to 4,400 GPM; Heads to 108 ft. TDH.
- Complete Vacuum Assist System with a high volume rotary vane liquid cooled vacuum pump (air cooled on the 4VAWP)
- Large steel air / water separation tank with automatic peeler valve assembly
- Closed loop vacuum oil recovery system with cyclonic vacuum oil reclaimer (exhaust filter optional)
- High performance cast iron centrifugal pumps
- Single point lifting bail, Discharge check valve, and Volute drain all standard
- High efficiency Totally Enclosed Fan Cooled motor for reduced cost and noise verses diesel
- Standardized parts across all sizes
- Large, easily accessible NEMA control panel with external disconnect, fuse block, magnetic contactor, and adjustable overload

Options:

- Diesel engine (Tier 3 rebuilt or Tier 4 new) or additional Electric motor options available
- Vacuum pump upgrade
- "Whisper Pack" full or partial enclosures
- Trailer mounted: Highway wheels / tires, Torsion bar axle, DOT light kit, Highway fenders, Tow hitch, and Brake kit available
- Camlock or Bauer type suction and discharge fittings (please consult CDPW for additional fittings)

CDPW Vacuum Assisted Wellpoint Pumps



Rotary Wellpoint Pumps 6 inch to 10 inch discharge

- Complete Wellpoint Pumps have been the industry standard for wellpoint and sock underdrain dewatering since 1923.
- 6", 8", and 10" connections provide easy field hookup to the most commonly found header pipe and layflat sizes – no costly 12" adapters or hard to find fittings needed.
- Large capacity suction and discharge priming tanks with automatic liquid recirculation are standard to protect pump end from dry run and reduce surges.
- Discharge check valve included on every model so pumps can be linked in parallel.
- Proven engine mounted gear drive reliably transfers power to the industry leading all cast iron Vogelsang wet-end.



Model*	6RWP	8RWP	10RWP
Suction / Discharge	6" x 6"	8" x 8"	10" x 10"
Max. Flow Rate (GPM)	600	1,400	2,600
Max. TDH (ft.)	80'	80'	80'
Vogelsang Pump model	VX136-210Q	VX186-260Q	VX186-520QD
Max. Air Handling (cfm)	80	190	350
Fuel Capacity (gallons)	54	62	70
Engine Model**	Isuzu 3CJ1 EPA Final Tier 4	Isuzu 4LE2T EPA Final Tier 4	Isuzu 4LE2X EPA Final Tier 4
Horsepower (Hp @ RPM)	19 @ 3,000	48 @ 2,400	60 @ 2,200
Size L x W x H (inches)	78 x 50 x 56	100 x 50 x 56	113 x 50 x 56
Dry Weight (pounds)	2,200	4,000	5,300

*Specify model RWP = Rotary WellPoint Pump

**other engines available

"The finest dewatering pumps and wellpoint equipment since 1923"

Rotary Wellpoint Pumps (RWP) 6 to 10 inch discharge units



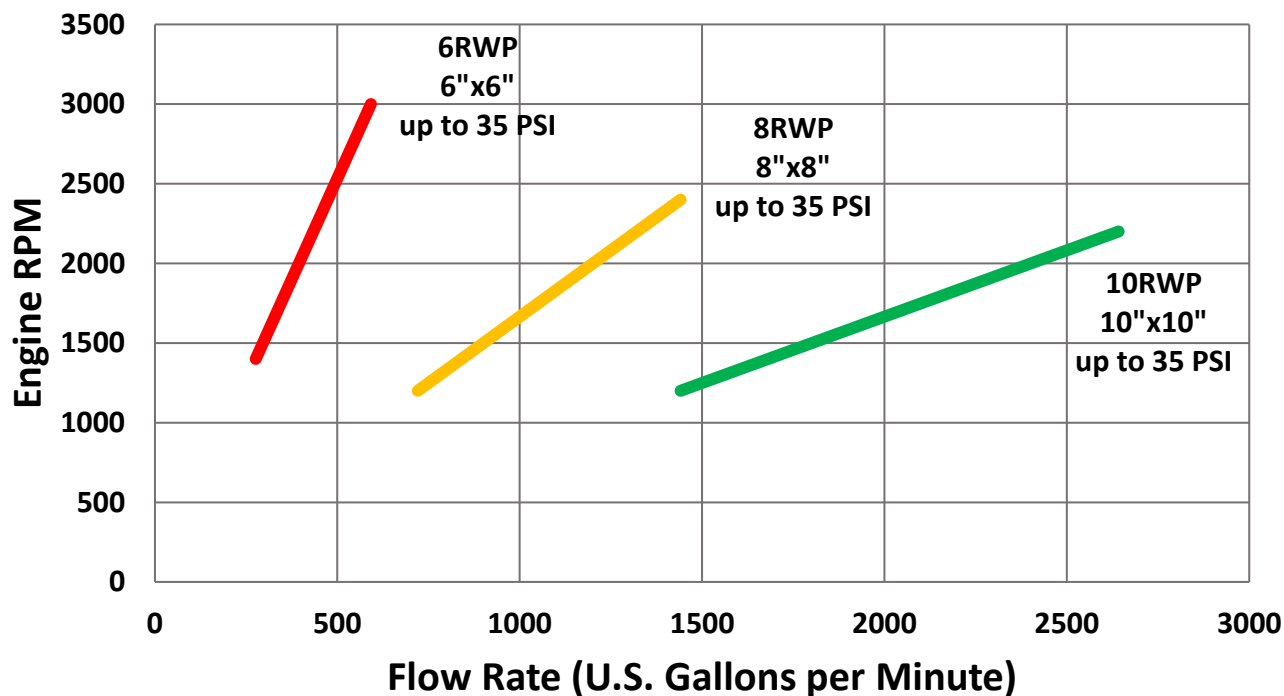
Standard Features:

- Maximum suction lift 25 ft.
- Pumping flow rate to 2,600 GPM; Heads to 80 ft. (35 psi) TDH
- Large steel air / water separation baffling tanks on both suction and discharge with automatic recirculation protection system
- Field proven high performance cast iron Vogelsang positive displacement rotary lobe wet-end
- Lockable fuel cap, Battery hold-down, Single point lifting bail, Discharge check valve, and Tank drains
- Skid mounted integral fuel tank sized for 18-24hr run time; clean out ports at all four corners
- Standardized parts across all sizes
- Full instrumentation panel with safety shutdowns
- Special fuel filtration system for removing dirt and water from diesel fuel
- Diesel engine (Tier 3 rebuilt or Tier 4 new) or Electric motor options available

Options:

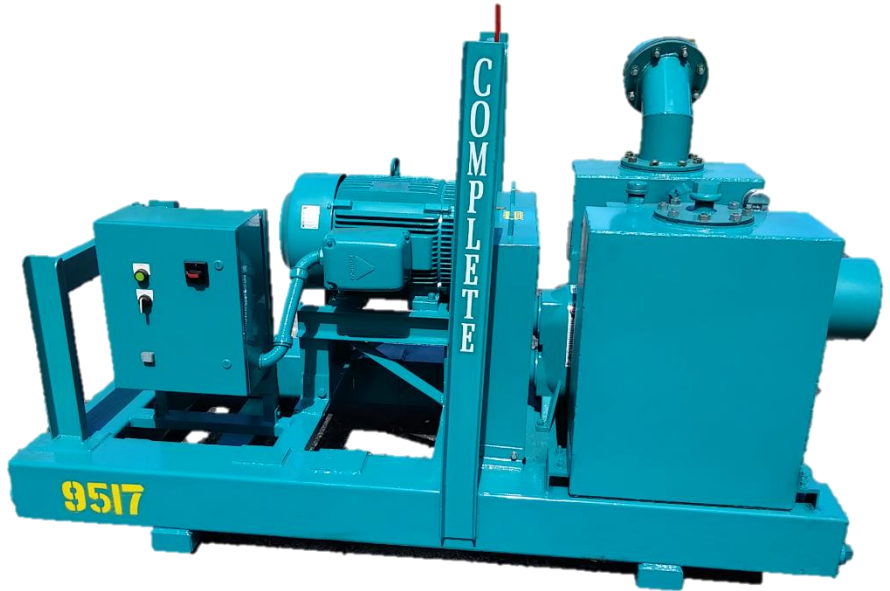
- Belts & Pulley reduction drive system
- Increased fuel capacity
- "Whisper Pack" full or partial enclosures
- Engines: Deutz, Hatz, Kohler, or Yanmar also available (additional engines available upon request)
- Trailer mounted: Highway wheels / tires, Torsion bar axle, DOT light kit, Highway fenders, Tow hitch, and Brake kit available
- Camlock or Bauer type suction and discharge fittings (please consult CDPW for additional fittings)

CDPW Rotary Wellpoint Pumps

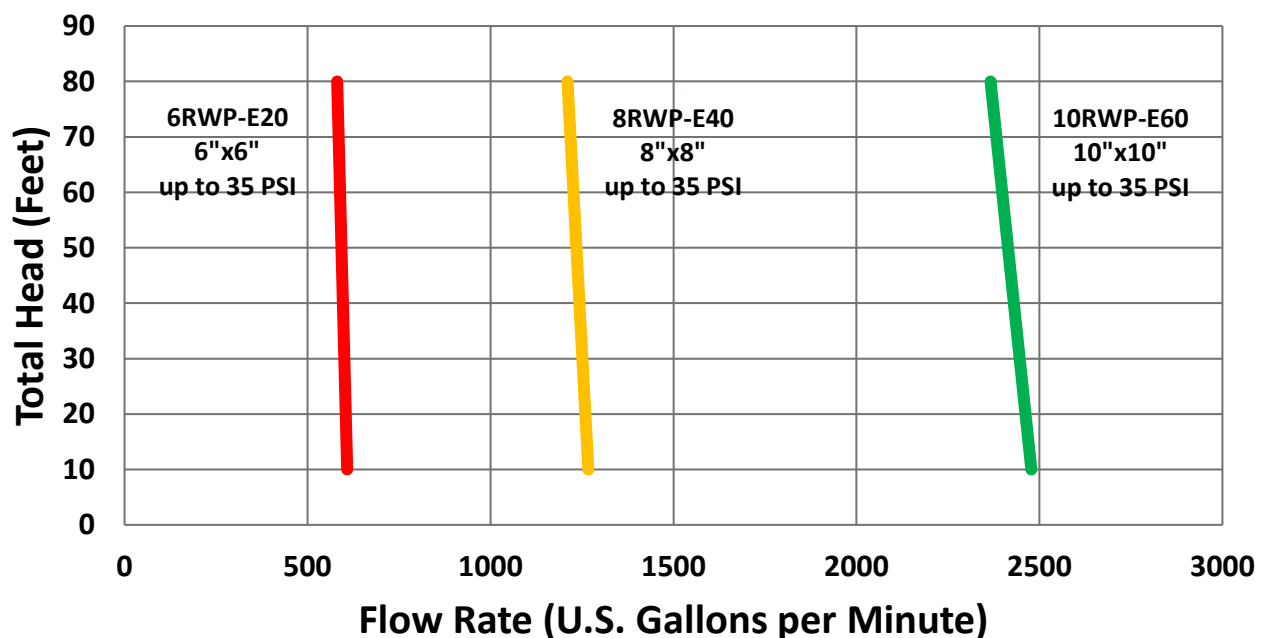


Rotary Wellpoint Pumps Electric Motor Driven

Our electric driven rotary lobe wellpoint pumps are designed for 600 to 2,400 GPM applications, similar to a standard centrifugal design so the pumps have interchangeable applications. This provides easy field hookup to the most commonly found pipe and layflat sizes – no costly adapters or hard to find fittings needed. Large capacity suction and discharge priming tanks with automatic liquid recirculation are standard to protect pump end components during periods of dry run and reduce surges in discharge and header lines. And since the rotary lobe pump end handles both the air and water together, there is less maintenance required than with priming assisted pumps. A piggy-back V-belt drive system reliably transfers power to the industry leading all cast iron Vogelsang wet-end. Optional motor mounted gear drive system available.



CDPW Electric Rotary Wellpoint Pumps



“The finest dewatering pumps and wellpoint equipment since 1923”

Rotary Wellpoint Pumps (RWP)

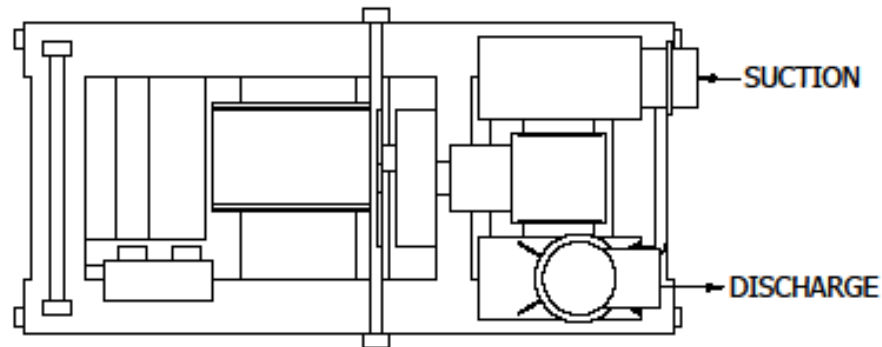
6 to 10 inch discharge, Electric driven units

2

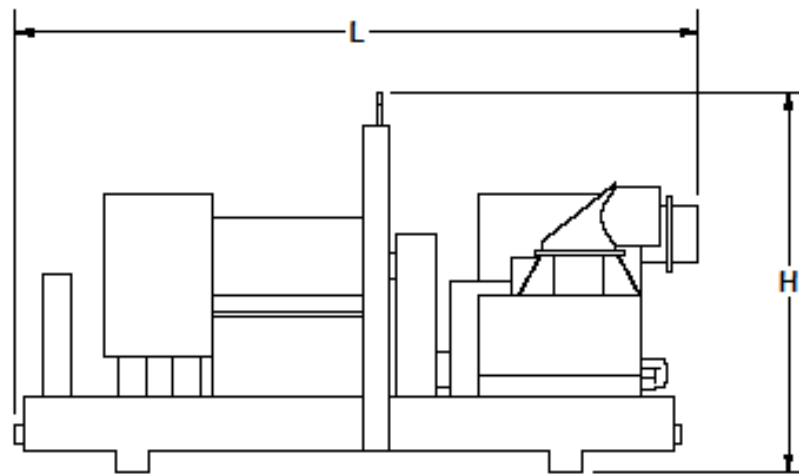
TABLE

PUMP#	WEIGHT (lbs)	L	W	H	D1	D2	S1	S2
6RWP-E20	2200	78	50	56	11	37	11	35
8RWP-E40	3800	100	50	56	10	38	10	35
10RWP-E60	5000	113	50	56	10	39	10	34

B



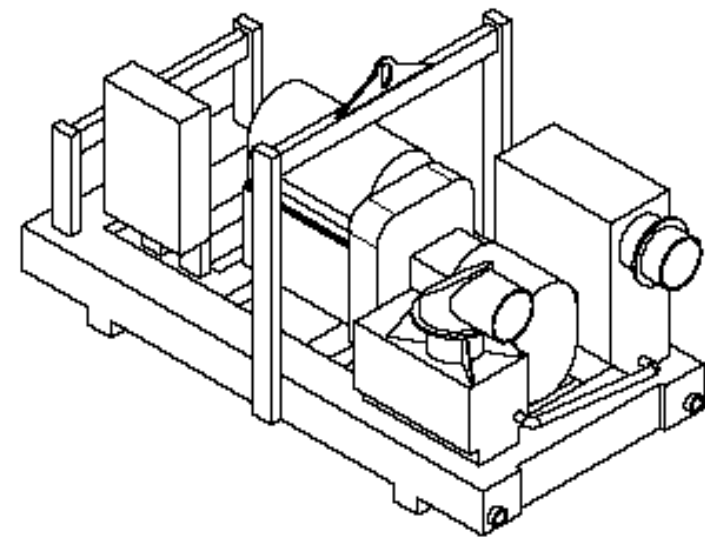
A



2

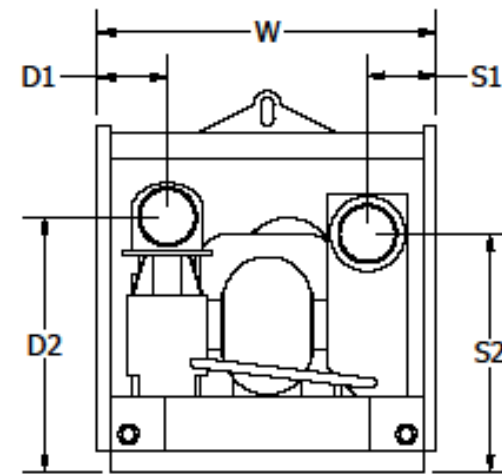


1



B

A



1

COMPLETE DESIGNING
PUMPS & WELL POINTS

MODEL: RWP-E, FRAME MOUNT
 ROTARY WELLPOINT PUMP - ELECTRIC
 WEIGHT: SEE CHART
 ALL DIMENSIONS IN INCHES

PRODUCT IS REPRESENTATIVE OF TYPICAL UNITS.
 MANUFACTURER RESERVES RIGHT TO ADJUST
 ACCORDINGLY TO SPECIFIC REQUIREMENTS.

Double Diaphragm Dewatering Pumps 4 & 6 inch discharge

Complete's Double Diaphragm Dewatering Pumps have been used in tough applications for over 25 years. Simple, compact, easy to use, fuel efficient, and durable!

Model 4DDP



Model 6DDP



Model*	4 DDP	6 DDP
Suction / Discharge	4" x 4"	6" x 6"
Max. Flow Rate (GPM)	300	400
Max. TDH (feet)	70'	70'
Max. Suction Lift (feet)	28'	28'
Engine Model**	Hatz 1D42Z EPA Final Tier 4	Hatz 1D81Z EPA Final Tier 4
Power (BHP @ RPM)	6 @ 2,000	10 @ 2,150
Size L x W x H (inches) Skid mounted unit	84 x 58 x 50	92 x 58 x 56
Dry Weight (pounds)	1,200	1,450

Applications:

- Construction dewatering
- Pit nuisance water removal
- Open excavations
- Temporary by-pass
- Small wellpoint systems

Standard model includes engine protector and fault indicator control panel with hour meter and key switch.

Deluxe model available with highway fenders and lights.

*Specify model DDP = Double Diaphragm Pump

**Other engines available – Hatz, Kubota, or Yanmar

“The finest dewatering pumps and wellpoint equipment since 1923”

AutoPrime™ Double Diaphragm Pumps (DDP)

4 & 6 inch discharge units



SPECIFICATIONS

(All specifications subject to change without notice)

Model 4DDP

Performance:

Pumping Capacity: to 300 gpm (1135 l/m)
Head Capacity: to 70' (21.3 m)
Suction Lift: to 28' (8.5 m)
Solids Capacity: to 1" spherical (2.5 cm)
Suction, Discharge: 4" x 4" NPT female tread
Discharge Location: Right or Left side, all models

Diesel Engine

Make / Model: Hatz 1D42Z – air cooled diesel
Kubota and Yanmar also available
Emissions: EPA Final Tier 4
Horsepower: 6hp continuous at 2000 rpm
Control Panel: Control panel with key start,
engine temperature, oil pressure, charge indicator
lights, cumulative hour meter, and safety shutdowns.

Frame

Type: Integral steel fuel cell / frame
Fuel Capacity: 14 gallons (53 liters);
approx. 70 hours run time between refueling
Fuel filler: 2" filler neck
Battery hold-down: External, lockable bar
Lifting bale: Single point, balanced
Flapper valves: Reinforced flapper / SS seats
Cleanouts: Five large cleanouts, 5" x 7"
Paint: Powder coated, industrial grade

Wheel Mount Standard

Axle: Single 2200# rated torsion axle
Tires: ST155/80/R13, highway rated
Tow Hitch: 2" ball or 2.5" ring, reversible
with safety chains
Leveling: Front jack stand,
Rear drop down post
Dimensions: Length 7' (84", 213 cm)
Width 4.8' (58", 147 cm)
Height 4.2' (50", 127 cm)
Weight 1200 lbs. (545 kg)

Model 6DDP

Performance:

Pumping Capacity: to 400 gpm (1515 l/m)
Head Capacity: to 70' (21.3 m)
Suction Lift: to 28' (8.5 m)
Solids Capacity: to 1" spherical (2.5 cm)
Suction, Discharge: 6" x 6" NPT female tread
Discharge Location: Right or Left side, all models

Diesel Engine

Make / Model: Hatz 1D81Z – air cooled diesel
Kubota and Yanmar also available
Emissions: EPA Final Tier 4
Horsepower: 10hp continuous at 2150 rpm
Control Panel: Control panel with key start,
engine temperature, oil pressure, charge indicator
lights, cumulative hour meter, and safety shutdowns.

Frame

Type: Integral steel fuel cell / frame
Fuel Capacity: 28 gallons (106 liters);
approx. 90 hours run time between refueling
Fuel filler: 2" filler neck
Battery hold-down: External, lockable bar
Lifting bale: Single point, balanced
Flapper valves: Reinforced flapper / SS seats
Cleanouts: Five large cleanouts, 5" x 7"
Paint: Powder coated, industrial grade

Wheel Mount Standard

Axle: Single 3500# rated torsion axle
Tires: ST175/80/R13, highway rated
Tow Hitch: 2" ball or 2.5" ring, reversible
with safety chains
Leveling: Front jack stand,
Rear drop down post
Dimensions: Length 7.7' (92", 234 cm)
Width 4.8' (58", 147 cm)
Height 4.7' (56", 142 cm)
Weight 1450 lbs. (660 kg)

Options

Deluxe unit with highway fenders and lights
Frame mount
"Whisper Pack" full or partial enclosures
Cam-lock or Bauer fittings

Warranty

CDPW Inc. warrants the entire unit for one-year parts and labor against defects in product or workmanship. Engine warranties are carried by the manufacturer and may exceed one year